



# Where is the uninterrupted power supply in Iceland s base station room





## Overview

---

The Hellisheiði Power Plant is located in Hengill and is only about 11 kilometers away from the Nesjavellir Geothermal Power Station. Being amongst the world's top ten geothermal energy power plants, the power output of the plant is supplied from the aluminum refineries located in.

The Hellisheiði Power Plant is located in Hengill and is only about 11 kilometers away from the Nesjavellir Geothermal Power Station. Being amongst the world's top ten geothermal energy power plants, the power output of the plant is supplied from the aluminum refineries located in.

Iceland is a world leader in renewable energy. 100% of the electricity in Iceland's electricity grid is produced from renewable resources. [1] In terms of total energy supply, 85% of the total primary energy supply in Iceland is derived from domestically produced renewable energy sources.

These power stations offer high capacities, with options like the Dabbsson DBS2100Pro providing up to 4300Wh for extensive energy needs. Fast charging capabilities, such as the Anker SOLIX C1000's 80% charge in 43 minutes, enhance usability for on-the-go energy. A variety of output ports, including.

Voltage in Iceland is standardized at 230 volts, with a frequency of 50 Hertz. This voltage is compatible with most European appliances and electronics. However, travelers visiting from countries with different voltage standards will require a voltage adapter to safely use their devices. For.

Svartsengi Power Station is a geothermal power plant on the Reykjanes peninsula. The station's excess water is used to fill the renowned Blue Lagoon. Photo from Pixabay, by neanet. No edits made. Svartsengi Power Station is located in the southwest of Iceland, near the town of Grindavik and close.

Your uninterruptible power supply (UPS) must be positioned somewhere safe, secure and accessible. In this article, we explore the fundamentals of UPS room layout and the things you need to consider when deciding where to locate your essential power protection systems. Designing a UPS room requires.

Proper installation and setup of an Uninterruptible Power Supply (UPS) are crucial



to ensure reliable power protection for your equipment. Whether you are installing a UPS for a home office, business network, or industrial site, following best practices helps prevent failures and optimises. Where should your uninterruptible power supply be located?

Your uninterruptible power supply (UPS) must be positioned somewhere safe, secure and accessible. In this article, we explore the fundamentals of UPS room layout and the things you need to consider when deciding where to locate your essential power protection systems.

Why should you install an uninterruptible power supply (UPS)?

Proper installation and setup of an Uninterruptible Power Supply (UPS) are crucial to ensure reliable power protection for your equipment. Whether you are installing a UPS for a home office, business network, or industrial site, following best practices helps prevent failures and optimises performance. In this section, we'll cover:.

What is a static uninterruptible power supply (sups)?

The static uninterruptible power supply (SUPS) basically consists of four major blocks. They are the battery rectifier/charger, battery bank, inverter and the transfer switch. The rectifier/charger receives the normal alternating current (AC) power supply, provides direct current (DC) power to the inverter, and charges the battery.



## Where is the uninterrupted power supply in Iceland s base station room



### [A Guide To UPS Room Layout , Carter Sullivan](#)

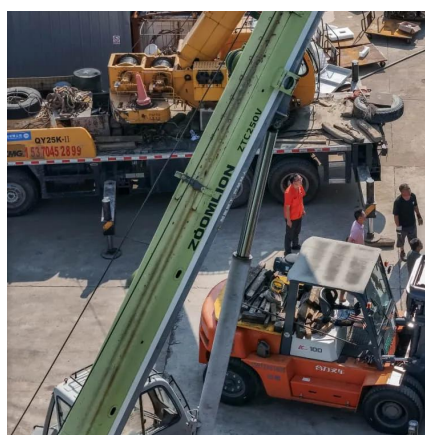
Your uninterruptible power supply (UPS) must be positioned somewhere safe, secure and accessible. In this article, we explore the fundamentals of UPS room layout and ...

[Request Quote](#)

### [Hellisheiði Power Station , Arctic Adventures](#)

Where Is Hellisheiði Power Station? The Hellisheiði Power Plant is located in Hengill and is only about 11 kilometers away from ...

[Request Quote](#)



### **Energy in Iceland**

This is what allows Iceland to harness geothermal energy, and these steam fields are used for heating everything from houses to swimming pools. Iceland is also starting to use "cold" areas ...

[Request Quote](#)



### [The 10 Best Power Stations in Iceland: Harnessing ...](#)

Consider power stations with Uninterruptible Power Supply (UPS) functionality. This feature allows for a seamless switch-over during ...

[Request Quote](#)



### [Svartsengi Power Station Travel Guide](#)

Svartsengi Power Station is located in the southwest of Iceland, near the town of Grindavik and close to Keflavik International Airport. Although it's not usually open to visitors, it ...

[Request Quote](#)



### [Svartsengi Power Station Travel Guide](#)

Svartsengi Power Station is located in the southwest of Iceland, near the town of Grindavik and close to Keflavik International ...

[Request Quote](#)



### **Iceland Base Command**

Iceland Base Command (IBC) is an inactive United States Army organization. It was established for the United States defense of the Kingdom of Iceland during World War II.

[Request Quote](#)



### [Uninterruptible Power Supply \(UPS\): Block](#)



...

What is a UPS (Uninterruptible Power Supply)? An Uninterruptible Power Supply (UPS) is defined as a piece of electrical ...

[Request Quote](#)



## The 10 Best Power Stations in Iceland: Harnessing Nature's Energy

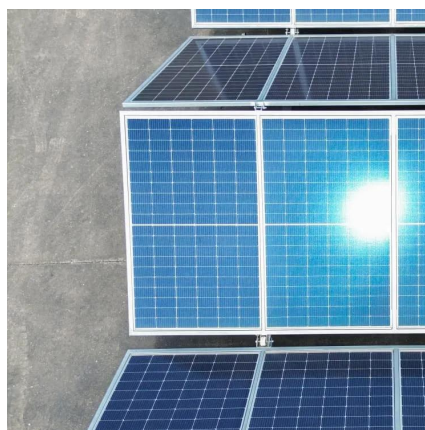
Consider power stations with Uninterruptible Power Supply (UPS) functionality. This feature allows for a seamless switch-over during power outages, preventing disruptions to your ...

[Request Quote](#)

## Uninterruptible Power Supply (UPS): Block Diagram & Explanation

What is a UPS (Uninterruptible Power Supply)? An Uninterruptible Power Supply (UPS) is defined as a piece of electrical equipment which can be used as an immediate power ...

[Request Quote](#)



## [Hellisheidi Power Station , Arctic Adventures](#)

Where Is Hellisheiði Power Station? The Hellisheiði Power Plant is located in Hengill and is only about 11 kilometers away from the Nesjavellir Geothermal Power Station.

[Request Quote](#)

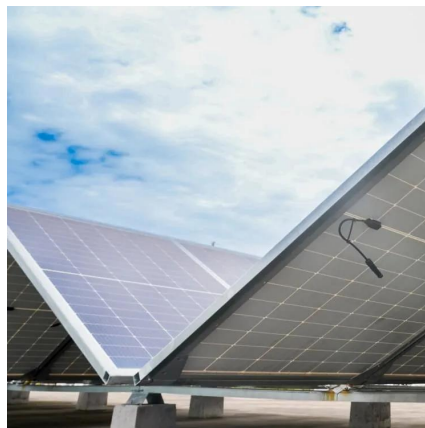
## Electricity in Iceland: Plug Types,



## Voltage, Adapters & Travel Tips

This is thanks to the abundant rivers and waterfalls found around the country and Iceland's location on the Mid-Atlantic Ridge, the source of the island's famous volcanic activity.

[Request Quote](#)



## [Overview of Uninterruptible Power Systems \(UPS\)](#)

Figure below shows a simple static UPS schematic. The static uninterruptible power supply (SUPS) basically consists of four major blocks. They are the battery rectifier/charger, battery ...

[Request Quote](#)

## [UPS Installation & Setup Guide, SecurePower](#)

Learn how to install a UPS correctly. From choosing the right location to compliance with UK regulations, get expert installation and setup guidance.

[Request Quote](#)





## Contact Us

---

For catalog requests, pricing, or partnerships, please visit:

<https://energyinnovationday.pl>

Phone: +48 22 335 1273

Email: [info@energyinnovationday.pl](mailto:info@energyinnovationday.pl)

Scan the QR code to contact us via WhatsApp.

