



What is the wind power source in the base station





Overview

The preferred source that wind power may replace on the grid is hydro power, which is already carbon dioxide free. If a conventional source is replaced, it may simply be ramped down or switched from generation to standby, in which mode it still burns fuel and emits carbon dioxide.

The preferred source that wind power may replace on the grid is hydro power, which is already carbon dioxide free. If a conventional source is replaced, it may simply be ramped down or switched from generation to standby, in which mode it still burns fuel and emits carbon dioxide.

Equinor 's U.S. based subsidiary is developing the Empire Wind lease area in two phases Located south of Long Island, the first phase of Empire Wind started construction in 2024. The installation of the first of 54 foundations took place in Spring 2025. Empire Wind is expected to reach its.

Find wind data and information in New York, including maps, capacity, ordinances, and more in these areas: Installed Capacity 2,627 MW Source: American Clean Power Association MW Under Construction 207 MW Source: American Clean Power Association Source: U.S. Energy Information Administration's Open.

Since base stations are major consumers of cellular networks energy with significant contribution to operational expenditures, powering base stations sites using the energy of wind, sun, fuel cells or a combination gain mobile operators' attention. It is shown that powering base station sites with.

Wind energy is commercially generated for delivery and sale on the grid. Wind projects vary in size, configuration, and generating capacity depending on factors such as layout in large groups or rows to optimize exposure to prevailing winds. They may also be installed as a single turbine.

Load is the amount of power in the electrical grid. Base load is the level that it typically does not go below, that is, the basic amount of electricity that is always required. Peak load is the daily fluctuation of electricity use. It is usually lowest in the wee hours of the morning and highest.

Under normal circumstances, communication base stations usually adopt a hybrid



system of solar and wind energy for energy storage. Do you know why?

Communication base stations should be established wherever there are people, even in remote areas where few people visit. This is to prevent the.



What is the wind power source in the base station



[New York Wind Energy Guide for Local Decision Makers: ...](#)

This Wind Energy Guide is meant to provide the reader with an introductory understanding of wind energy technologies and the considerations that affect wind power siting, permitting, and ...

[Request Quote](#)

About the Project

Vestas is the supplier of wind turbine generators for Empire Wind, which use 54 V236-15MW wind turbine generators with a total generating capacity of around 810 MW. Each turbine rotation ...

[Request Quote](#)



[How Do Wind Power Stations Work? A Detailed Look Inside](#)

A wind power station, often known as a wind farm, is a facility that converts wind energy into electricity. These stations are usually made up of many wind turbines strategically ...

[Request Quote](#)

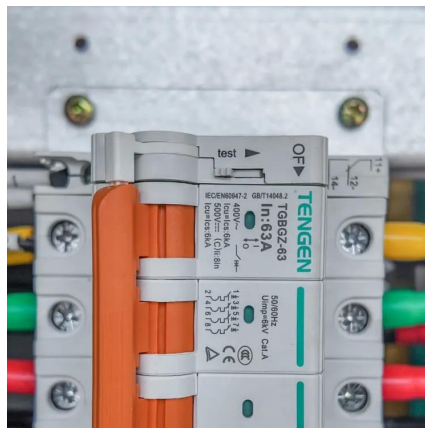


[New York Wind Energy Guidebook for Local Governments](#)

Wind energy is intermittent in nature, meaning wind power plants only produce power when the wind is blowing. By contrast, fossil-fueled power plants can control how much power they ...



[Request Quote](#)



Solar-Wind Hybrid Power for Base Stations: Why It's Preferred

For a single energy system, such as pure photovoltaic or wind power, a base station needs to be equipped with a 5-7 day energy storage battery. In contrast, wind-solar ...

[Request Quote](#)



Sunrise Wind Project Overview

Sunrise Wind Project Overview The Sunrise Wind Project consists of: o Up to 122 of foundations shore wind turbines and associated o One of shore converter station (OCS-DC)

[Request Quote](#)



How Do Wind Power Stations Work? A Detailed ...

A wind power station, often known as a wind farm, is a facility that converts wind energy into electricity. These stations are usually made ...

[Request Quote](#)



WINDEXchange: Wind Energy in New York



The United States Wind Turbine Database (USWTDB) provides the locations of land-based and offshore wind turbines in the United States, corresponding wind project information, and ...

[Request Quote](#)



Renewable offshore wind power for a clean energy future , Ørsted

Sunrise Wind builds on the foundations we laid with New York's first offshore wind farm, South Fork Wind, to transform New ...

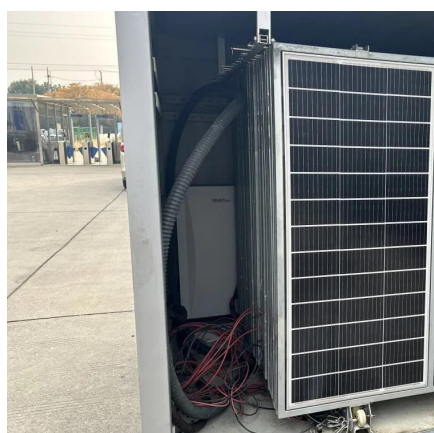
[Request Quote](#)



Renewable offshore wind power for a clean energy future , Ørsted

Sunrise Wind builds on the foundations we laid with New York's first offshore wind farm, South Fork Wind, to transform New York's electric grid and accelerate our clean energy future. With ...

[Request Quote](#)



[National Wind Watch , The Grid and Industrial Wind Power](#)

The preferred source that wind power may replace on the grid is hydro power, which is already carbon dioxide free. If a conventional source is replaced, it may simply be ramped down or ...

[Request Quote](#)

[Renewable Energy Sources for Power](#)



[Supply of Base ...](#)

In Hashimoto (2004), an autonomous hybrid system containing a wind turbine and PV panels as the only sources of energy used to power a 3 kW radio base station site on Yonaguni Island, ...

[Request Quote](#)





Contact Us

For catalog requests, pricing, or partnerships, please visit:

<https://energyinnovationday.pl>

Phone: +48 22 335 1273

Email: info@energyinnovationday.pl

Scan the QR code to contact us via WhatsApp.

