



What is the inverter power factor





What is the inverter power factor



What is the meaning of "power factor" in my inverter settings?

It reflects the utilization efficiency of power sources in an electrical power system. The closer the power factor is to 1, the higher the utilization efficiency of the power source.

[Request Quote](#)

What is Inverter power factor meaning

When an inverter is said to have a power factor of 0.8 what exactly does it mean? Is it in reference to lowest power factor permissible for loads? Or is it the power factor the ...

[Request Quote](#)



What is the power factor of an inverter?

This inverter is engineered to have a high power factor, which is essential for efficient operation in standalone power systems. It can handle a variety of loads, from small household appliances ...

[Request Quote](#)

Power factor

Where apparent power exceeds real power, more current is flowing in the circuit than would be required to transfer real power. Where the power factor magnitude is less than one, the ...

[Request Quote](#)



[The Power Factor of Frequency Inverter Technology](#)

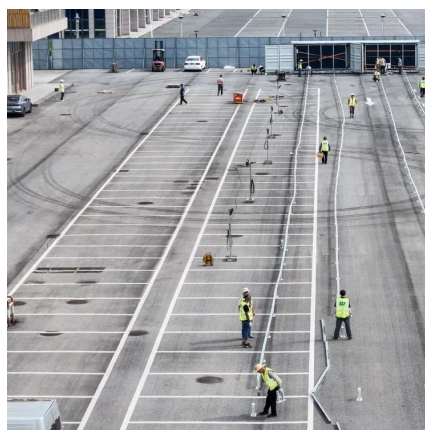
Power factor is a ratio of real power -- what is used by the device -- to apparent power -- load present in the circuit. Power factor (real ...

[Request Quote](#)

Inverter Power Factor

Inverters are generally designed to generate power at unity power factor, particularly at full power. The actual requirements vary, but one example is: The power factor must be greater than 0.90 ...

[Request Quote](#)



[What is the power factor of an inverter generator?](#)

When it comes to inverter generators, the power factor affects how much power they can actually deliver to a load. Let's say you have an inverter generator with a rated power of 3000 watts. If ...

[Request Quote](#)

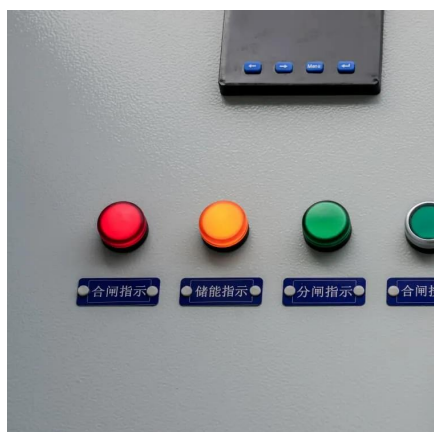
[Understanding Inverter Power Ratings: kW](#)



[vs kVA Explained](#)

Most hybrid and solar inverters operate at a power factor between 0.8 and 1.0. The power factor directly impacts how much usable energy (kW) you can get from your inverter.

[Request Quote](#)



Inverter Power Factor

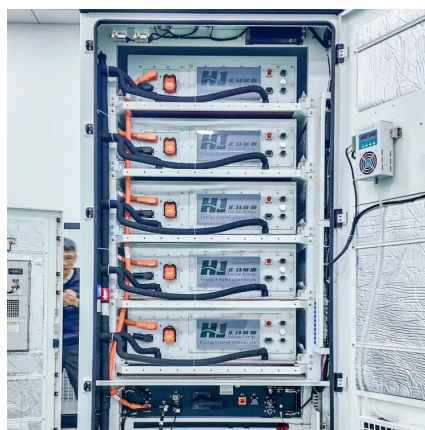
What is "POWER FACTOR" in the specs for an inverter? How efficient the inverter is? For example would a power factor of 95% mean that you lose 5% to the

[Request Quote](#)

How does the power factor of an inverter affect the power system?

The power factor of an inverter has a direct impact on the efficiency of the power system. When an inverter has a low power factor, it draws more current from the power source than ...

[Request Quote](#)



What is "POWER FACTOR" in the specs for an inverter? How ...

What is "POWER FACTOR" in the specs for an inverter? How efficient the inverter is? For example would a power factor of 95% mean that you lose 5% to the

[Request Quote](#)

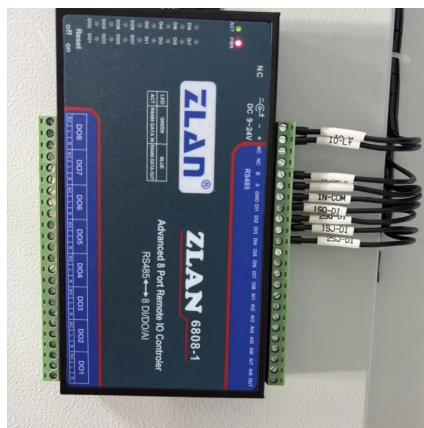
[The Power Factor of Frequency Inverter](#)



Technology

Power factor is a ratio of real power -- what is used by the device -- to apparent power -- load present in the circuit. Power factor (real power/apparent power) is a dimensionless number ...

[Request Quote](#)



Understanding Inverter Power Ratings: kW vs kVA ...

Most hybrid and solar inverters operate at a power factor between 0.8 and 1.0. The power factor directly impacts how much usable energy (kW) you ...

[Request Quote](#)



Contact Us

For catalog requests, pricing, or partnerships, please visit:

<https://energyinnovationday.pl>

Phone: +48 22 335 1273

Email: info@energyinnovationday.pl

Scan the QR code to contact us via WhatsApp.

