



What does sox mean in energy storage power station





Overview

A battery energy storage system (BESS), battery storage power station, battery energy grid storage (BEGS) or battery grid storage is a type of technology that uses a group of in the grid to store . Battery storage is the fastest responding on , and it is used to stabilise those grids, as battery storage can transition fr.

SoX stands for “State of X,” and it is a concept that encompasses the overall condition of a battery. The “X” broadly represents various battery characteristics, such as the state of charge, health, and performance.

SoX stands for “State of X,” and it is a concept that encompasses the overall condition of a battery. The “X” broadly represents various battery characteristics, such as the state of charge, health, and performance.

SoX stands for “State of X,” and it is a concept that encompasses the overall condition of a battery. The “X” broadly represents various battery characteristics, such as the state of charge, health, and performance. SoX includes SoC (State of Charge), SoH (State of Health), SoP (State of Power).

Battery storage power stations store electrical energy in various types of batteries such as lithium-ion, lead-acid, and flow cell batteries. These facilities require efficient operation and management functions, including data collection capabilities, system control, and management capabilities.

A battery energy storage system (BESS), battery storage power station, battery energy grid storage (BEGS) or battery grid storage is a type of energy storage technology that uses a group of batteries in the grid to store electrical energy. Battery storage is the fastest responding dispatchable.

By definition, a battery energy storage system (BESS) is an electrochemical apparatus that uses a battery to store and distribute electricity. discharging the electricity to its end consumer. The number of large-scale battery energy storage systems installed in the US has grown exponentially in the.

The State of Charge (SoC) represents the percentage of energy stored in a battery or energy storage system relative to its full capacity. SoC is a vital metric for evaluating energy availability and overall system performance. It can be applied to grid-scale or residential battery storage, electric.



A sulfur dioxide molecule, one compound that is considered a sulfur oxide. [1]
Sulfur oxides or SO_x are a group of pollutants that contain both sulfur and oxygen molecules. Sulfur dioxide, SO₂ is the most common form in the lower atmosphere. Sulfur dioxide is colourless, but has a distinct smell.



What does sox mean in energy storage power station



Sage Reference

Large-scale energy production associated with industrialization has established sulfur oxides as one of the prime anthropogenic air pollutants. Coal and oil contain trace impurities of sulfur.

[Request Quote](#)

Battery energy storage system

Overview
Construction
Safety
Operating characteristics
Market development and deployment

A battery energy storage system (BESS), battery storage power station, battery energy grid storage (BEGS) or battery grid storage is a type of energy storage technology that uses a group of batteries in the grid to store electrical energy. Battery storage is the fastest responding dispatchable source of power on electric grids, and it is used to stabilise those grids, as battery storage can transition fr...

[Request Quote](#)



UNDERSTANDING STATE OF CHARGE (SOC), ...

State of Charge (SOC) is a fundamental parameter that measures the energy level of a battery or an energy storage system. It is ...

[Request Quote](#)

Battery storage power station - a comprehensive guide



This article provides a comprehensive guide on battery storage power station (also known as energy storage power stations). These facilities play a crucial role in modern power ...

[Request Quote](#)



[Battery storage power station - a comprehensive guide](#)

This article provides a comprehensive guide on battery storage power station (also known as energy storage power stations). These facilities play a crucial role in modern power grids by ...

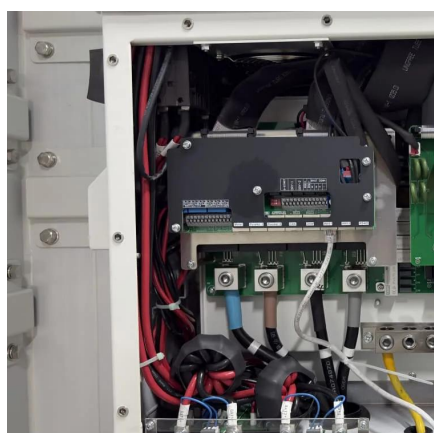
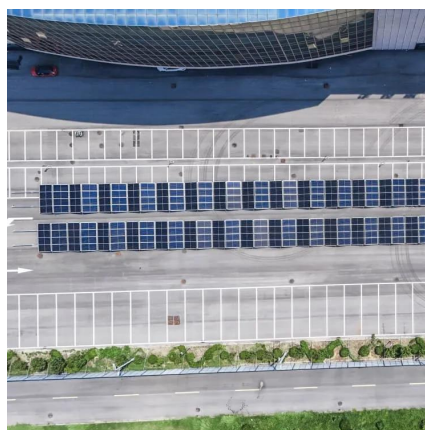
[Request Quote](#)



[Powerwall - Home Battery Storage , Tesla](#)

Powerwall is a compact home battery that stores energy generated by solar or from the grid. You can then use your stored energy to power the devices and appliances in your home day and ...

[Request Quote](#)



Battery Glossary - SoX (State of X)

SoX stands for "State of X," and it is a concept that encompasses the overall condition of a battery. The "X" broadly ...

[Request Quote](#)

Battery Glossary - SoX (State of X)



SoX stands for "State of X," and it is a concept that encompasses the overall condition of a battery. The "X" broadly represents various battery characteristics, such as the ...

[Request Quote](#)



Sulfur oxides

Coal burning power plants that burn high-sulfur coal are some of the main sources of SO_x. Vehicles can also be a source of sulfur oxides. There are several different ways to prevent SO ...

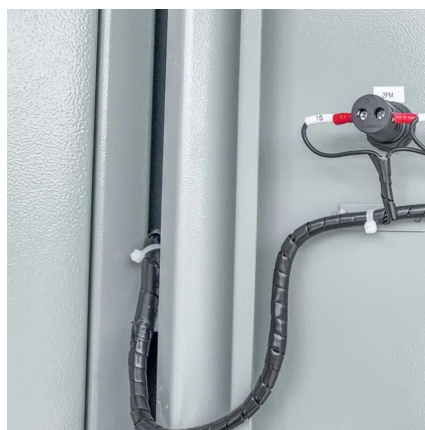
[Request Quote](#)



What is State of Charge? - gridX

The State of Charge (SoC) represents the percentage of energy stored in a battery or energy storage system relative to its full ...

[Request Quote](#)



[Powerwall - Home Battery Storage , Tesla](#)

Powerwall is a compact home battery that stores energy generated by solar or from the grid. You can then use your stored energy to power the ...

[Request Quote](#)



[AN INTRODUCTION TO BATTERY ENERGY](#)



STORAGE ...

Built to endure high load currents with a long cycle life, lithium iron phosphate (LFP) batteries are designed to handle utility-scale renewable power generation and energy storage capacities up ...

[Request Quote](#)



What is State of Charge? - gridX

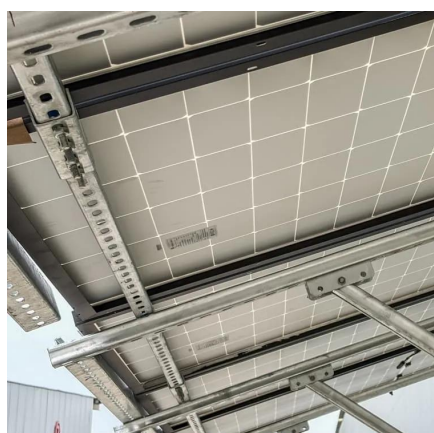
The State of Charge (SoC) represents the percentage of energy stored in a battery or energy storage system relative to its full capacity. SoC is a vital metric for evaluating energy ...

[Request Quote](#)

Battery energy storage system

A battery energy storage system (BESS), battery storage power station, battery energy grid storage (BEGS) or battery grid storage is a type of energy storage technology that uses a ...

[Request Quote](#)



Sulfur oxides

Coal burning power plants that burn high-sulfur coal are some of the main sources of SO_x. Vehicles can also be a source of sulfur oxides. There ...

[Request Quote](#)

UNDERSTANDING STATE OF CHARGE



(SOC), DEPTH OF ...

State of Charge (SOC) is a fundamental parameter that measures the energy level of a battery or an energy storage system. It is expressed as a percentage, indicating the ...

[Request Quote](#)



Energy management strategy of Battery Energy Storage Station ...

In recent years, the use of large-scale energy storage power supply to participate in power grid frequency regulation has been widely concerned. The charge and discharge cycle ...

[Request Quote](#)



Contact Us

For catalog requests, pricing, or partnerships, please visit:

<https://energyinnovationday.pl>

Phone: +48 22 335 1273

Email: info@energyinnovationday.pl

Scan the QR code to contact us via WhatsApp.

