



What does base station communication recovery mean





Overview

In the context of external land surveying, a base station is a receiver at an accurately-known fixed location which is used to derive correction information for nearby portable GPS receivers. This correction data allows and other effects to be corrected out of the position data obtained by the mobile stations, which gives greatly increased location precision and accuracy over the results obtained by uncorrected GPS receivers.

If that heat isn't effectively dissipated, the base station's performance can severely degrade or even fail, causing you to suddenly lose your signal.

If that heat isn't effectively dissipated, the base station's performance can severely degrade or even fail, causing you to suddenly lose your signal.

As typhoons batter coastal cities and wildfires engulf telecom infrastructure, one urgent question emerges: How can communication base station disaster recovery mechanisms keep pace with escalating climate threats?

Last month's Category 5 hurricane in Florida left 47% of cellular towers inoperable.

The present-day tele-space is incomplete without the base stations as these constitute an important part of the modern-day scheme of wireless communications. They are referred to as cell towers or cellular antennas. These types of objects are an inevitability since they serve the purpose of.

A base station is an integral component of wireless communication networks, serving as a central point that manages the transmission and reception of signals between cellular networks and mobile devices. It ensures that users can access voice and data services effectively. Now that we have a solid.

BTS antenna owners are now entering the third wave of telecommunications with the presence of Telecom Infrastructure Partners. This change has come about through investment opportunities based on a long-term BTS antenna lease agreement. Modern society has always seemed somewhat obsessed with.

A base station is called node B in 3G, eNB in LTE (4G), and gNB in 5G. The term is used in the context of mobile telephony, wireless computer networking and other wireless communications and in land surveying. In surveying, it is a GPS receiver at



a known position, while in wireless communications.

If that heat isn't effectively dissipated, the base station's performance can severely degrade or even fail, causing you to suddenly lose your signal. This article will guide you to a deeper understanding of a base station's composition and working principles, with a special focus on the impact of. What is a base station in a telecommunications network?

A base station is a critical component in a telecommunications network. A fixed transceiver that acts as the central communication hub for one or more wireless mobile client devices. In the context of cellular networks, it facilitates wireless communication between mobile devices and the core network.

How does a base station manage a mobile device?

Handover Management: When a mobile device moves from one cell to another during a call or data session, the base station manages the handover process. It ensures a seamless transition by transferring the connection from one cell to another without interrupting the ongoing communication.

Why is a base station important?

A base station plays a pivotal role in the realm of telecommunications, acting as the cornerstone of connectivity. It enables seamless communication by linking various wireless devices to broader networks, ensuring that data flows efficiently from one point to another.

What are base stations & how do they work?

Base stations are the critical components that enable mobile phones and other devices to connect to cellular networks. Here's how they work in a typical mobile network: **Signal Transmission and Reception:** Mobile devices communicate with the nearest base station via radio waves.



What does base station communication recovery mean



Base Station Definition

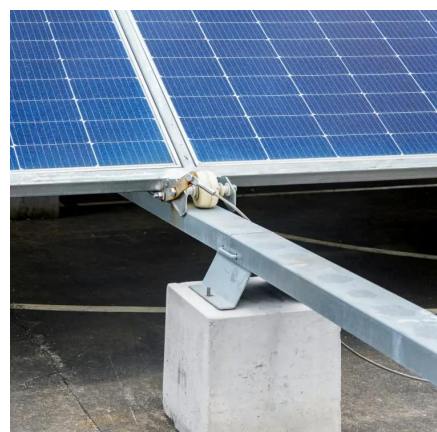
In a computer networking context, a base station broadcasts a wireless signal that allows other devices to join a local network. However, ...

[Request Quote](#)

Base Station Definition

In a computer networking context, a base station broadcasts a wireless signal that allows other devices to join a local network. However, the term is also commonly used in the ...

[Request Quote](#)



[What is a Base Station? -- From Communication ...](#)

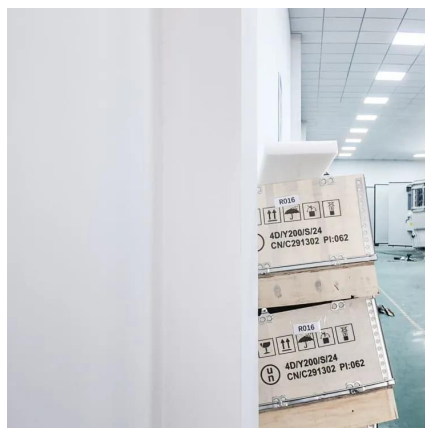
Simply put, a base station (BS) is a wireless transceiver device in a mobile communication network that provides wireless ...

[Request Quote](#)

[Phase-Locked Loops for High-Frequency ...](#)

In a phase-locked loop, the error signal from the phase comparator is the difference between the input frequency or phase and that of the signal fed ...

[Request Quote](#)



Base station

Overview
Land surveying
Computer networking
Wireless communications
See also

In the context of external land surveying, a base station is a GPS receiver at an accurately-known fixed location which is used to derive correction information for nearby portable GPS receivers. This correction data allows propagation and other effects to be corrected out of the position data obtained by the mobile stations, which gives greatly increased location precision and accuracy over the results obtained by uncorrected GPS receivers.

[Request Quote](#)



Understanding Base Stations: The Backbone of Wireless Communication

What is a Base Station? A base station is a fixed communication infrastructure that connects mobile devices (such as smartphones, tablets, or IoT devices) to a network, enabling ...

[Request Quote](#)

Base Stations

Backhaul Connection: The backhaul connection links the base station to the core network in the mobile communication system. It provides for the interchange of data between ...

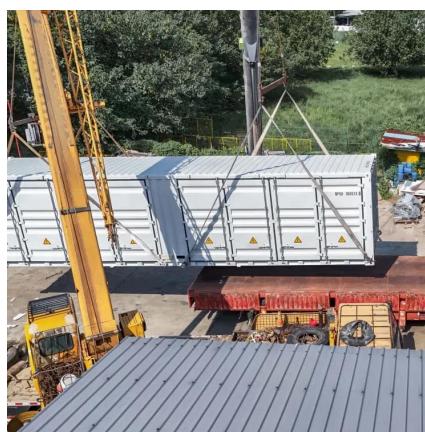


[Request Quote](#)

[The Base Station in Wireless Communications: ...](#)

A single base station can cover one or more cells of a telecommunications network. The user's terminal uses the base station ...

[Request Quote](#)



Communication Base Station Disaster Recovery , Huijue Group ...

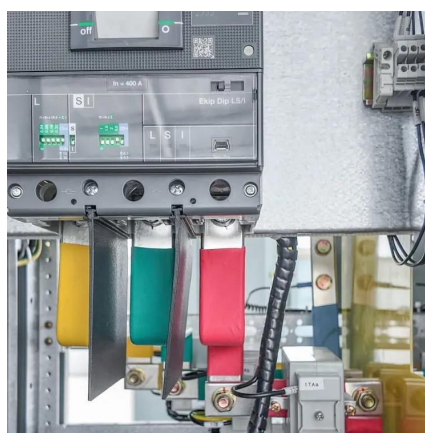
As typhoons batter coastal cities and wildfires engulf telecom infrastructure, one urgent question emerges: How can communication base station disaster recovery mechanisms keep pace with ...

[Request Quote](#)

[What is a Base Station in Telecommunications?](#)

Discover the role and functionality of a base station in telecommunications networks. Learn how these critical components manage communication between mobile devices and the network, ...

[Request Quote](#)



What Is A Base Station?



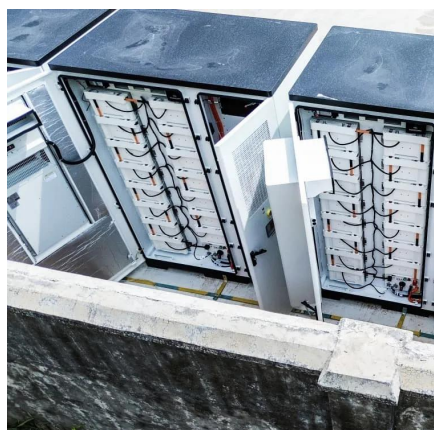
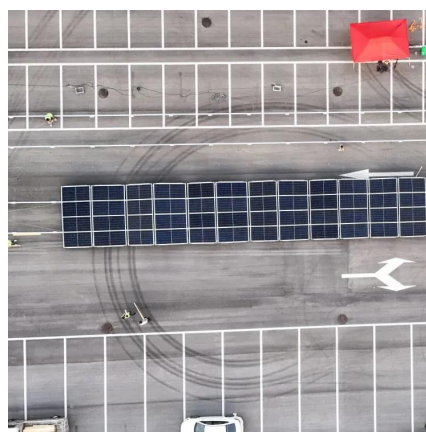
Handover Management: When a mobile device moves from one cell to another during a call or data session, the base station manages the handover process. It ensures a ...

[Request Quote](#)

[What is a Base Station? -- From Communication Core to ...](#)

Simply put, a base station (BS) is a wireless transceiver device in a mobile communication network that provides wireless coverage and communicates with mobile ...

[Request Quote](#)



[Understanding Base Stations: The Backbone of Wireless ...](#)

What is a Base Station? A base station is a fixed communication infrastructure that connects mobile devices (such as smartphones, tablets, or IoT devices) to a network, enabling ...

[Request Quote](#)

Base station

In the context of external land surveying, a base station is a GPS receiver at an accurately-known fixed location which is used to derive correction information for nearby portable GPS receivers.

[Request Quote](#)



[The Base Station in Wireless](#)



[Communications: The Key to ...](#)

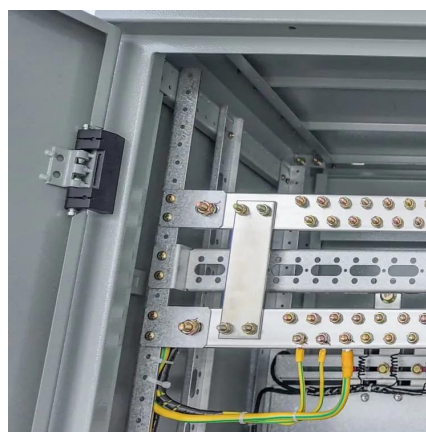
A single base station can cover one or more cells of a telecommunications network. The user's terminal uses the base station from which the signal is the strongest at a ...

[Request Quote](#)

Phase-Locked Loops for High-Frequency Receivers and Transmitters

In a phase-locked loop, the error signal from the phase comparator is the difference between the input frequency or phase and that of the signal fed back. The system will force the frequency ...

[Request Quote](#)



[What is a Base Station in Telecommunications?](#)

Discover the role and functionality of a base station in telecommunications networks. Learn how these critical components manage communication ...

[Request Quote](#)

Base Stations

Backhaul Connection: The backhaul connection links the base station to the core network in the mobile communication system. It ...

[Request Quote](#)





Contact Us

For catalog requests, pricing, or partnerships, please visit:

<https://energyinnovationday.pl>

Phone: +48 22 335 1273

Email: info@energyinnovationday.pl

Scan the QR code to contact us via WhatsApp.

