



# What are the power signal base stations in Moldova





## Overview

---

The energy system of the Republic of Moldova is interconnected with that of Romania through a high-voltage line that connects the Isaccea transformer station in Romania and the Vulcănești transformer station in the Republic of Moldova.

The energy system of the Republic of Moldova is interconnected with that of Romania through a high-voltage line that connects the Isaccea transformer station in Romania and the Vulcănești transformer station in the Republic of Moldova.

The gas-fired Cuciurgan power station (Russian: Молдавская ГРЭС, romanized: Moldovskaya GRES), the largest power station in Moldova, is in Transnistria, on the shores of the Cuciurgan Reservoir bordering Ukraine. In 2024 it generated over three quarters of Moldova's electricity. [1] Commissioned.

The Republic of Moldova has an electrical infrastructure that includes a transmission and distribution network for electric power. The energy system of the Republic of Moldova is interconnected with that of Romania through a high-voltage line that connects the Isaccea transformer station in Romania.

Moldova has 64 power plants totalling 2,929 MW and 15,651 km of power lines mapped on OpenStreetMap. If multiple sources are listed for a power plant, only the first source is used in this breakdown. Statistics on the electricity network in Moldova from OpenStreetMap.

Kuchurgan power station (Молдавская ГРЭС) is an operating power station of at least 910-megawatts (MW) in Dnestrovsc, Slobozia, Transnistria, Moldova with multiple units, some of which are not currently operating. It is also known as Moldavskaya power station, Cuciurgani-Moldavskaya GRES (MGRES).

Moldova remains dependent on electricity transit through the left bank of the Dniester River, as power purchased from the European Union currently flows through the separatist-controlled region via the Cuciurgan node. At present, there are no technical alternatives to bypass this route. The Russian.

The construction of the 400 kV Balti-Suceava overhead power line (OPL), the modernization of the 330 kV Balti power station and the construction of a new 400 kV power station have been declared works of national public utility. This will



speed up the carrying out of these major energy. Where is the largest power station in Moldova?

The gas-fired Cuciurgan power station, was the largest power station in Moldova, is located in Transnistria, on the shores of the Cuciurgan Reservoir bordering Ukraine. In 2024 it generated over three quarters of Moldova's electricity. Commissioned in 1964, it formerly burned some coal and fuel oil.

What happened to Moldova's electricity supply in 2022?

In November 2022 the power station located in Transnistria which produced electricity from Russian gas ceased supplying Moldova with electricity. Electricity was imported from Romania, albeit at a higher cost, helped by a grant from the EU of €200m.

Why did Russia stop supplying electricity to Moldova?

In 2025, Russia stopped supplying the power plant with gas, leading to the Moldovan Energy Crisis. The power stations has installed capacity of 2,520 MW. It was originally fueled by natural gas, fuel oil and coal. The plant produces some 75% of Moldova's electricity needs.

How will Mesa support Moldova?

MESA will support Moldova to accelerate its ability to meet ENTSO-E requirements and enable EU grid integration, by deploying technology solutions and equipment and support the development of a sustained and skilled energy sector workforce. Improve flexibility of the Moldova power system.



## What are the power signal base stations in Moldova



### [The Ministry of Energy and USAID signed the ...](#)

The power system of the Republic of Moldova will be connected to the Romanian and European grids through a new 400 kV ...

[Request Quote](#)

### **The Ministry of Energy and USAID signed the Memorandum of ...**

The power system of the Republic of Moldova will be connected to the Romanian and European grids through a new 400 kV overhead power line with an estimated length of ...

[Request Quote](#)



### **Electric energy**

The energy system of the Republic of Moldova is interconnected with that of Romania through a high-voltage line that connects the Isaccea transformer station in Romania and the Vulcanesti ...

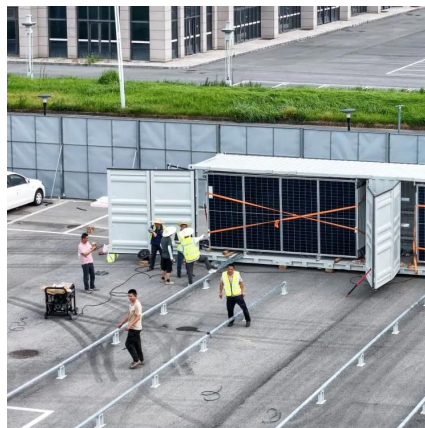
[Request Quote](#)

### **Construction of Balti-Suceava power line, modernization of Balti ...**

In the territory of Moldova, the Balti-Suceava LEA will be 58 km long. An important aspect of the project involves investments in existing electricity infrastructure.



[Request Quote](#)



## Energy in Moldova

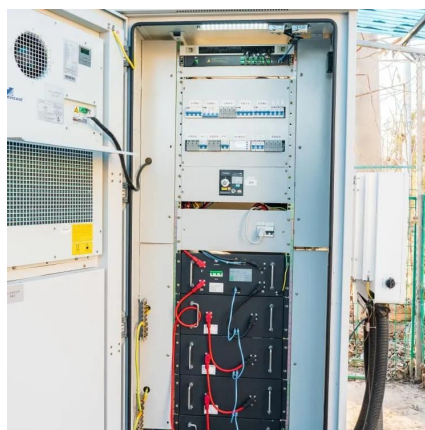
In November 2022 the power station located in Transnistria which produced electricity from Russian gas ceased supplying Moldova with electricity. Electricity was imported from ...

[Request Quote](#)

## Construction of Balti-Suceava power line, modernization of Balti power

In the territory of Moldova, the Balti-Suceava LEA will be 58 km long. An important aspect of the project involves investments in existing electricity infrastructure.

[Request Quote](#)



## Cuciurgan power station

The gas-fired Cuciurgan power station (Russian: ?????????? ????, romanized: Moldovskaya GRES), the largest power station in Moldova, is in Transnistria, on the shores of the Cuciurgan ...

[Request Quote](#)

## [Chisinau-Vulcanesti Power Line to Break](#)



...

To mitigate this risk, the government is accelerating the construction of the Chisinau-Vulcanesti high-voltage power line, ...

[Request Quote](#)



## Moldova

Moldova has 64 power plants totalling 2,929 MW and 15,651 km of power lines mapped on OpenStreetMap. If multiple sources are listed for a power plant, only the first ...

[Request Quote](#)

## CHP Source 1 power station

CHP Source 1 power station (Sursa 1, ??? ??????? I, ?????????? ??-2) is an operating power station of at least 258-megawatts (MW) in Chisinau, Moldova.

[Request Quote](#)



## Investments in the energy system

Increase resilience of Moldova's power system. MESA will support Moldova to accelerate its ability to meet ENTSO-E requirements and enable EU grid integration, by deploying ...

[Request Quote](#)

## Kuchurgan power station



Kuchurgan power station (???????????) is an operating power station of at least 910-megawatts (MW) in Dnestrovsc, Slobozia, Transnistria, Moldova with multiple units, some of ...

[Request Quote](#)



### **Chisinau-Vulcanesti Power Line to Break Moldova's Energy ...**

To mitigate this risk, the government is accelerating the construction of the Chisinau-Vulcanesti high-voltage power line, scheduled for completion by the end of 2025.

[Request Quote](#)



## Contact Us

---

For catalog requests, pricing, or partnerships, please visit:

<https://energyinnovationday.pl>

Phone: +48 22 335 1273

Email: [info@energyinnovationday.pl](mailto:info@energyinnovationday.pl)

Scan the QR code to contact us via WhatsApp.

