



# What are the new base station communication equipment





## Overview

---

5G base station chips are the lifeblood of base stations, which are pivotal in transmitting high-speed data across vast networks. These chips enable: High bandwidth: Supporting enhanced mobile broadband (eMBB) services. Low latency: Facilitating ultra-reliable low-latency.

5G base station chips are the lifeblood of base stations, which are pivotal in transmitting high-speed data across vast networks. These chips enable: High bandwidth: Supporting enhanced mobile broadband (eMBB) services. Low latency: Facilitating ultra-reliable low-latency.

An auxiliary radio communication system (ARCS) is a wireless two-way building communication system. It is for New York City Fire Department (FDNY) use only. It helps firefighters talk inside a building. An ARCS includes a base station (transceiver) connected to antennas throughout the building and.

As global mobile data traffic surges 35% annually, communication base stations face unprecedented demands. Can traditional tower designs sustain hyper-connected smart cities while reducing carbon footprints?

The answer lies in three breakthrough innovations reshaping this \$42 billion industry.

As 5G networks become the backbone of modern communication, 5G base station chips are emerging as a cornerstone of this transformation. With projections showing significant growth by 2025, understanding the driving forces, challenges, and real-world applications of these chips is crucial. 5G base.

L3Harris Technologies has introduced the Two47 Base Station, the first offering of its next-generation Two47 systems, services and solutions portfolio designed to enhance the communications capabilities of first responders and public safety officials. The Two47 Base Station provides public safety.

The idea of base stations is anchored in their function to provide coverage, capacity, and connectivity, hence allowing for extending the working capabilities of mobile phones and other radio gear. What is Base Station?



What is Base Station?

A base station represents an access point for a wireless.

DBS3900 Dual-Mode Base Station is the fourth generation base station developed by Huawei. It features a multi-mode modular design and supports three working modes: GSM mode, Huawei Base Station Overview: A base station, also known as an eNodeB (for 4G LTE) or gNodeB (for 5G NR) in Huawei's.



## What are the new base station communication equipment



### [5G Base Station Chips: Driving Future Connectivity by 2025](#)

As 5G networks become the backbone of modern communication, 5G base station chips are emerging as a cornerstone of this transformation. With projections showing ...

[Request Quote](#)

### Wireless Base Station Solutions

Qorvo products are designed for multimode base stations. Whether you're needing high efficiency, low noise or high linearity, ...

[Request Quote](#)



### Base Stations

The present-day tele-space is incomplete without the base stations as these constitute an important part of the modern-day scheme of wireless communications. They are ...

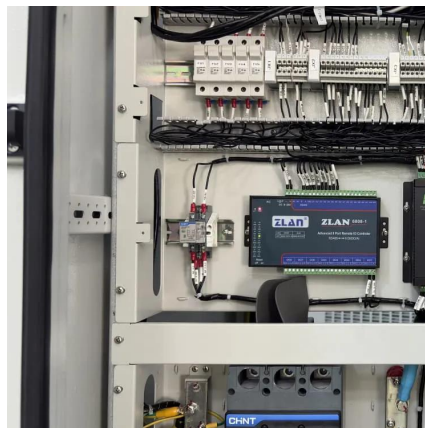
[Request Quote](#)

### [Next-Generation Base Station Released for First Responders](#)

The Two47 Base Station provides public safety officials an energy-efficient, space-saving Project 25 standards-compliant communications station that enables up to 10 channels ...



[Request Quote](#)



## Wireless Base Station Solutions

Qorvo products are designed for multimode base stations. Whether you're needing high efficiency, low noise or high linearity, Qorvo's portfolio offers market-leading performance ...

[Request Quote](#)

## Base Station Equipment - Types and Applications of Mobile ...

DBS3900 Dual-Mode Base Station is the fourth generation base station developed by Huawei.

[Request Quote](#)



## Base Station Equipment - Types and Applications of Mobile Communication

DBS3900 Dual-Mode Base Station is the fourth generation base station developed by Huawei.

[Request Quote](#)

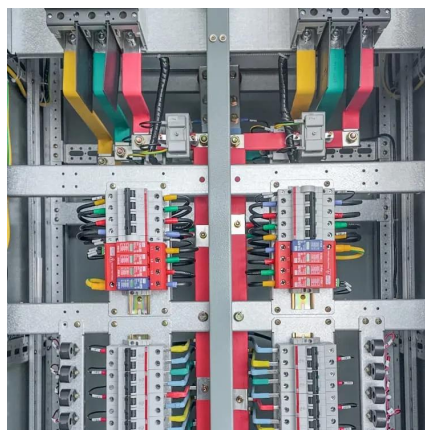
## [Next-Generation Base Station Released](#)



## [for First ...](#)

The Two47 Base Station provides public safety officials an energy-efficient, space-saving Project 25 standards-compliant ...

[Request Quote](#)



## [Cellular Networks, Cells, and Base Stations -- EITC](#)

A cell site (or cell tower, or cellular base station) is a cellular-enabled mobile device site where antennae and electronic communications equipment are placed - typically ...

[Request Quote](#)

## [Communication Base Station Body in the Real World: 5 Uses](#)

Communication base station bodies are critical components in the wireless infrastructure that keeps our digital lives connected. These enclosures house essential ...

[Request Quote](#)



## [Solutions for Base Station Components . Syensqo](#)

Our innovative portfolio enables better production of antennas and wire and cables in base stations. Our materials equip antennas with incredible thermal stability, flame retardance, ...

[Request Quote](#)

## [Auxiliary Radio Communication System](#)



## [Application](#)

It helps firefighters talk inside a building. An ARCS includes a base station (transceiver) connected to antennas throughout the building and a radio console in the building lobby. ...

[Request Quote](#)



## **Base Stations**

The present-day tele-space is incomplete without the base stations as these constitute an important part of the modern-day scheme ...

[Request Quote](#)

## **Communication Base Station Innovation Trends , Huijue Group ...**

As global mobile data traffic surges 35% annually, communication base stations face unprecedented demands. Can traditional tower designs sustain hyper-connected smart cities ...

[Request Quote](#)





## Contact Us

---

For catalog requests, pricing, or partnerships, please visit:

<https://energyinnovationday.pl>

Phone: +48 22 335 1273

Email: [info@energyinnovationday.pl](mailto:info@energyinnovationday.pl)

Scan the QR code to contact us via WhatsApp.

