



What are the emergency communication cluster base stations





Overview

A p25 base station is essentially a radio transceiver that acts as the central hub for communication within a P25 system. It is responsible for transmitting and receiving radio signals between mobile and portable radios used by first responders in the field.

A p25 base station is essentially a radio transceiver that acts as the central hub for communication within a P25 system. It is responsible for transmitting and receiving radio signals between mobile and portable radios used by first responders in the field.

Product Director Base Emergency Communications System (BECS) supports installation force protection, public safety, installation management, and homeland security. BECS manages, engineers, acquires, delivers, and supports CONUS non-tactical Land Mobile Radio (LMR), Computer-Aided Dispatch (CAD).

High-altitude tethered balloon base stations (HATBBSs) are a promising solution to communication disruptions, providing wide communication coverage in disaster-stricken areas. However, a single HATBBS is insufficient for large disaster zones, and limited resources may restrict the number and energy.

This document is intended to guide Public Safety Answering Points (PSAPs) in planning for, or procurement procedures of updating/refreshing the Call-Handling Equipment (CHE) their PSAP operates. Guideline to establish the best practice for establishing RACES. This document is intended to inform.

The National Emergency Communications Plan (NECP) is the nation's strategic plan to strengthen and enhance emergency communications capabilities. The NECP navigates the complex mission of maintaining and improving emergency communications capabilities for emergency responders and serves as the.

Enable interoperable communications to ensure coordination and collaboration among Federal, State, Tribal, Territorial, and local (F/S/T/T/L) governments, as well as the private sector and non-governmental organizations; Enable effective and efficient Federal disaster response and recovery by.

ACC-RI is exploring the market and seeking input from industry that has an interest



in integrating, maintaining, and sustaining a solution as a service that provides reliable emergency dispatching capabilities for First Responders at U.S. Army installations. Capabilities to include, but not limited.



What are the emergency communication cluster base stations



[National Emergency Communications Plan](#)

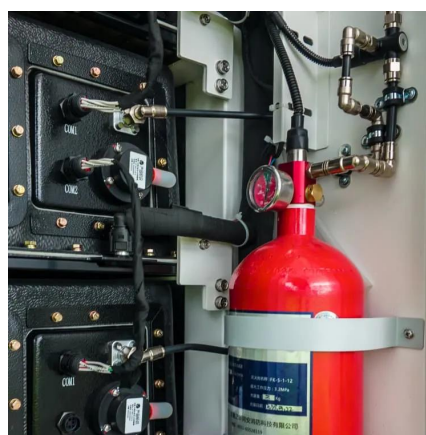
Enable the nation's emergency response community to communicate and share information securely across communications technologies in real ...

[Request Quote](#)

WHO's Health Emergency Appeal 2025

WHO's health emergency appeal identifies the critical priorities and resources required to address 42 ongoing health emergencies, including 17 Grade 3 crises - the most ...

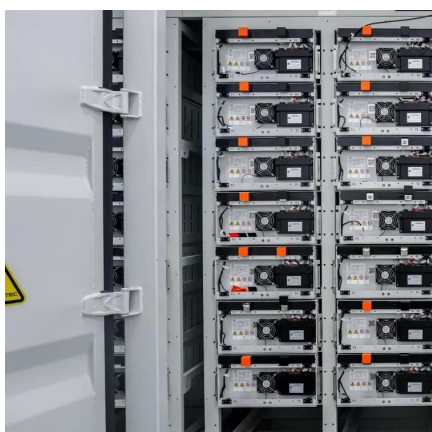
[Request Quote](#)



[National Emergency Communications Plan](#)

Enable the nation's emergency response community to communicate and share information securely across communications technologies in real time, including all levels of government, ...

[Request Quote](#)



[Emergency response framework \(?ERF\)?, Edition 2.1](#)

The ERF provides WHO staff with essential guidance on how the Organization manages the assessment, grading and response to public health events and emergencies with ...



[Request Quote](#)



Microsoft Word

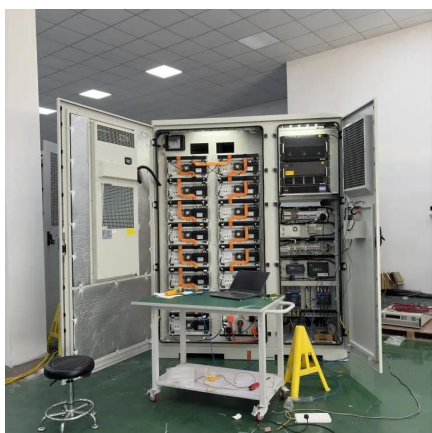
LMR systems typically consist of handheld portable radios, mobile radios, base stations, a network, and repeaters. This integration should allow voice and data to be shared between ...

[Request Quote](#)

Emergency Care Toolkit

Emergency Care Toolkit Overview The WHO Emergency Care Toolkit (ECT) is an open access bundle of interventions, developed to be implemented in emergency units within hospitals, ...

[Request Quote](#)



[Tethered Balloon Cluster Deployments and ...](#)

Natural disasters can severely disrupt conventional communication systems, hampering relief efforts. High-altitude tethered ...

[Request Quote](#)

GOARN marks 25 years of advancing



global health emergency ...

The Global Outbreak Alert and Response Network (GOARN) has been at the forefront of the global fight against health emergencies since its inception in April 2000. By ...

[Request Quote](#)



[World Health Organization Emergencies Programme](#)

National health emergency alert and response framework This multi-hazard Health Emergency Alert and Response Framework provides guidance for coordinating emergency ...

[Request Quote](#)



Emergency care

Emergency care is powerfully aligned with the primary health care agenda as it provides first contact clinical care for those who are acutely ill or injured. Pre-hospital and ...

[Request Quote](#)



Plans, Policies, and Guidelines , Division of Homeland Security ...

This document establishes a minimum level and standard configuration of programming for interoperability and common channels into base stations used by public safety in New York State.

[Request Quote](#)



Tethered Balloon Cluster



Deployments and Optimization for Emergency

High-altitude tethered balloon base stations (HATBBSs) are a promising solution to communication disruptions, providing wide communication coverage in disaster-stricken areas.

[Request Quote](#)



[Base Emergency Communications System](#)

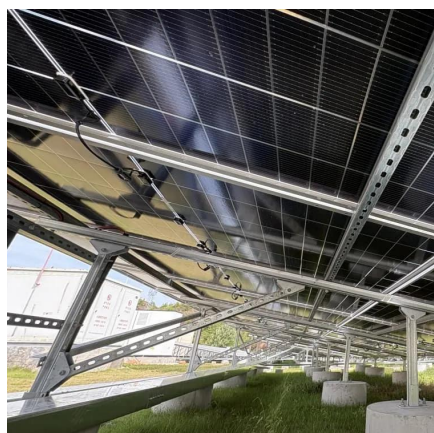
Next Generation 9-1-1 (NG-911) includes Call Handling System (CHS), infrastructure, Geospatial Information System (GIS), and Location ...

[Request Quote](#)

Tethered Balloon Cluster Deployments and Optimization for ...

High-altitude tethered balloon base stations (HATBBSs) are a promising solution to communication disruptions, providing wide communication coverage in disaster-stricken areas.

[Request Quote](#)



[Emergency preparedness saves lives amid Romania's ...](#)

Emergency planning is critical This rapid, coordinated response was only possible because of Romania's investment in emergency preparedness - early warning systems, ...

[Request Quote](#)

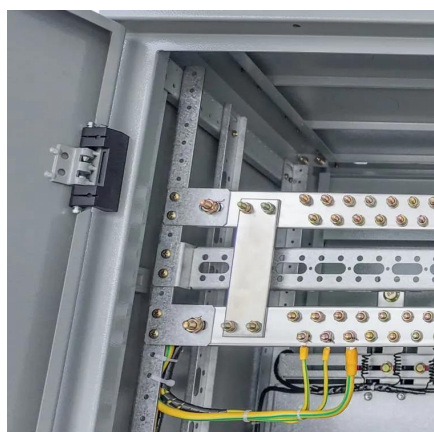
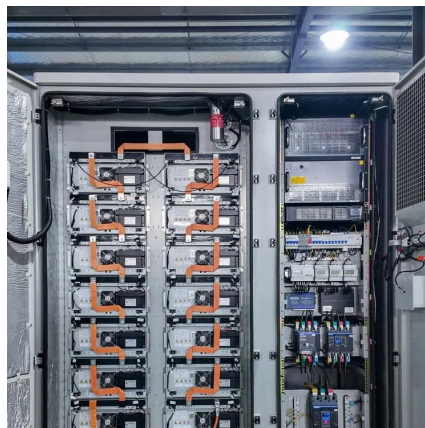
[Everything You Need To Know About P25](#)



[Base Stations](#)

A p25 base station is essentially a radio transceiver that acts as the central hub for communication within a P25 system. It is responsible for transmitting and receiving radio ...

[Request Quote](#)



[The Emergency Communication Ways in Sky-air-ground](#)

Explore Belfone's integrated emergency communication solutions that connect sky, air, and ground forces. Ensure seamless, reliable coordination during critical missions and ...

[Request Quote](#)

[Emergencies: WHO Health emergency kits](#)

What sort of supplies are in a standard emergency health kit? WHO has standardized medicines and medical supplies needed in emergencies to allow swift, efficient ...

[Request Quote](#)



Tethered Balloon Cluster Deployments and Optimization for Emergency

Natural disasters can severely disrupt conventional communication systems, hampering relief efforts. High-altitude tethered balloon base stations (HATBBSs) are a ...

[Request Quote](#)

[Dispatch 101: The ins and outs of](#)



communication ...

There are four basic types of communication centers. The stand-alone center is utilized by one specific fire department. A regional ...

[Request Quote](#)



Health emergencies

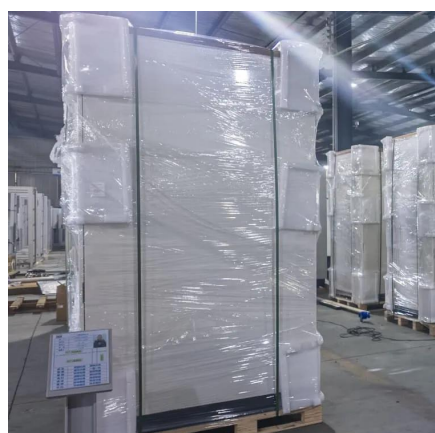
I Emergency Operations | Emergency Preparedness Health Security Preparedness The Health Security Preparedness mission is to enable countries to apply evidence-based data and ...

[Request Quote](#)

Disaster Emergency Communications

We provide disaster emergency communications through six geographically dispersed Mobile Emergency Response Support detachments and a pre-positioned fleet of ...

[Request Quote](#)



Base Emergency Communications System

Next Generation 9-1-1 (NG-911) includes Call Handling System (CHS), infrastructure, Geospatial Information System (GIS), and Location Information Services (LIS). NG-911 CHS enables ...

[Request Quote](#)

Fourth meeting of the International



Health Regulations (2005) ...

Concurring with the advice unanimously expressed by the Committee during the meeting, the WHO Director-General determined that the upsurge of mpox 2024 continues to ...

[Request Quote](#)



[Dispatch 101: The ins and outs of communication centers](#)

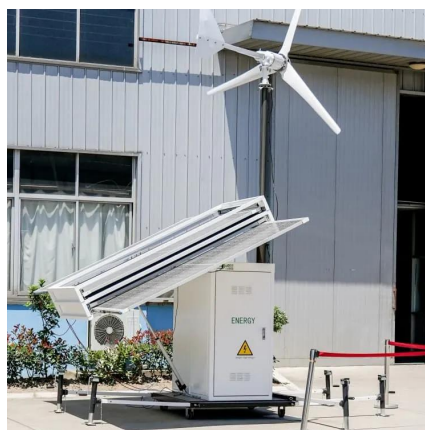
There are four basic types of communication centers. The stand-alone center is utilized by one specific fire department. A regional center serves many fire departments over a ...

[Request Quote](#)

[Plans, Policies, and Guidelines , Division of ...](#)

This document establishes a minimum level and standard configuration of programming for interoperability and common channels into base stations ...

[Request Quote](#)





Contact Us

For catalog requests, pricing, or partnerships, please visit:

<https://energyinnovationday.pl>

Phone: +48 22 335 1273

Email: info@energyinnovationday.pl

Scan the QR code to contact us via WhatsApp.

