



Virtual current appears in solar combiner box





Overview

Mixing strings with different module counts or orientations into one combiner input creates unequal Voc and current sharing. Label both ends of every string. Use permanent tags with string ID, polarity, and source. Measure Voc and Isc per string at the box.

Mixing strings with different module counts or orientations into one combiner input creates unequal Voc and current sharing. Label both ends of every string. Use permanent tags with string ID, polarity, and source. Measure Voc and Isc per string at the box.

A solar combiner box serves as the electrical junction point where multiple PV string circuits converge before feeding the inverter. This critical component houses protective devices—circuit breakers or fuses—along with terminals, busbars, and often surge protection. Because it handles significant

In solar photovoltaic (PV) power generation systems, the solar combiner box is a crucial electrical device on the DC side. It consolidates direct current (DC) output from multiple solar panel strings and processes them through protective devices such as fuses, circuit breakers, and surge protection.

When your solar system underperforms, the real culprit is often the solar combiner box—leading to energy loss, safety risks, and costly repairs. Learn how to detect and fix it. The solar combiner box, also known as a PV string combiner box, centralizes and protects your PV array wiring. Failure can.

Small wiring errors inside PV combiners, isolators, and DC disconnects cause outsized losses. They trigger nuisance trips, hot spots, and hard-to-trace faults. This piece pinpoints seven frequent PV combiner box wiring mistakes and solar isolator wiring errors, then gives DC disconnect wiring best.

A DC combiner box serves as a central hub that aggregates the DC power output from multiple PV panels before it is sent to the inverter. Ensuring its proper functioning is essential for the overall efficiency and safety of the PV system. In this blog post, I will discuss the fault - diagnosis.

A PV Combiner Box is a device that brings together the output from multiple solar



panel strings and channels it into a single output going to the inverter. It simplifies wiring, improves safety, and keeps your solar setup neat and manageable. In a typical solar power system, each string of panels.



Virtual current appears in solar combiner box



[Everything You Need to Know About PV Combiner Box](#)

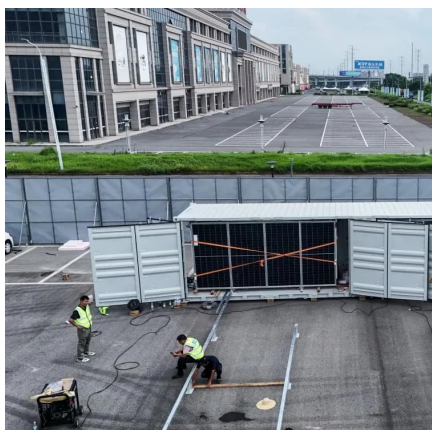
What is a PV Combiner Box? A PV Combiner Box is a device that brings together the output from multiple solar panel strings and channels it into a single output going to the ...

[Request Quote](#)

Combiner box issues

All the strings are producing the correct voltage, but once I flip my circuit breaker on in the combiner box, the lines drop from 160vdc to 2.5v and the output to the inverter reads ...

[Request Quote](#)



What is the fault

Measuring the voltage and current in the DC combiner box is a crucial step in fault diagnosis. Voltage Measurement: Use a digital multimeter to measure the voltage at different points in ...

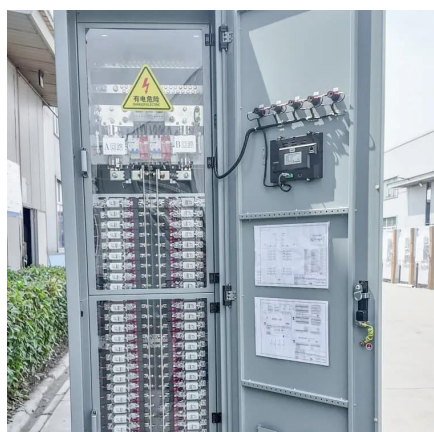
[Request Quote](#)

Solar Combiner Box Troubleshooting: 10 Common Problems and ...

Comprehensive guide to solar combiner box troubleshooting covering 10 common electrical faults. Any doubt please contact LETOP experts today.



[Request Quote](#)



Solar Combiner Box Common Problems

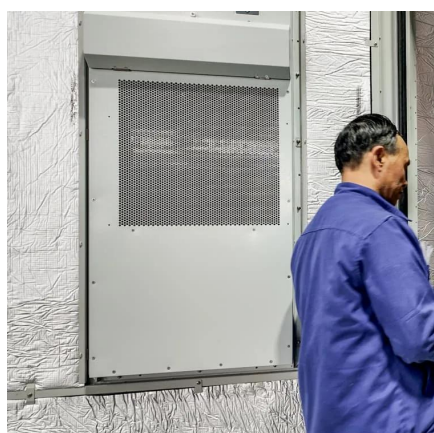
When the solar combiner box is grounded incorrectly, it results in electrical faults and equipment damage. Check all the grounding ...

[Request Quote](#)

[Seven wiring mistakes in PV combiner boxes and ...](#)

This piece pinpoints seven frequent PV combiner box wiring mistakes and solar isolator wiring errors, then gives DC disconnect wiring ...

[Request Quote](#)



[Solar Combiner Boxes and Voltage Changes: What to Know](#)

If you connect panels in parallel, you keep the voltage the same, but the current adds up. This setup helps you manage the output of multiple strings in your system.

[Request Quote](#)

[Everything You Need to Know About PV](#)



[Combiner ...](#)

What is a PV Combiner Box? A PV Combiner Box is a device that brings together the output from multiple solar panel strings and ...

[Request Quote](#)



[Seven wiring mistakes in PV combiner boxes and isolators](#)

This piece pinpoints seven frequent PV combiner box wiring mistakes and solar isolator wiring errors, then gives DC disconnect wiring best practices you can apply on any ...

[Request Quote](#)

Troubleshooting Solar Combiner Boxes: 6 Common Faults & Fixes

Diagnose and fix solar combiner box faults. A field guide on breaker tripping, blown fuses, terminal overheating, and ground faults for O& M teams.

[Request Quote](#)



[Virtual current appears in photovoltaic combiner box](#)

In a photovoltaic system, a combiner box acts as a central hub that consolidates and manages the direct current (DC) output of multiple solar panels. Its main purpose is to simplify the wiring ...

[Request Quote](#)

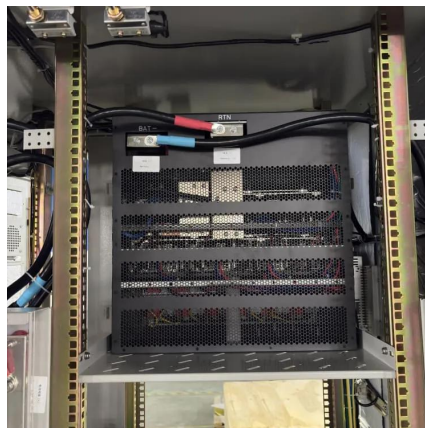
Solar Combiner Box Common



Problems

When your solar system underperforms, the real culprit is often the solar combiner box--leading to energy loss, safety risks, and costly repairs. ...

[Request Quote](#)



[Solar Combiner Box Common Problems & Troubleshooting](#)

When the solar combiner box is grounded incorrectly, it results in electrical faults and equipment damage. Check all the grounding connections and ensure they meet the legal ...

[Request Quote](#)

[Solar Combiner Box Common Problems & Troubleshooting](#)

When your solar system underperforms, the real culprit is often the solar combiner box--leading to energy loss, safety risks, and costly repairs. Learn how to detect and fix it.

[Request Quote](#)





Contact Us

For catalog requests, pricing, or partnerships, please visit:

<https://energyinnovationday.pl>

Phone: +48 22 335 1273

Email: info@energyinnovationday.pl

Scan the QR code to contact us via WhatsApp.

