



Standard dimensions for solar panel installation





Overview

A typical residential solar panel measures about 65 inches by 39 inches (roughly 5.4 feet by 3.25 feet), though slight variations exist between manufacturers. These standard dimensions provide approximately 15 square feet of surface area per panel.

A typical residential solar panel measures about 65 inches by 39 inches (roughly 5.4 feet by 3.25 feet), though slight variations exist between manufacturers. These standard dimensions provide approximately 15 square feet of surface area per panel.

Most residential solar panels measure between 65 to 75 inches long and 39 to 41 inches wide, delivering power outputs ranging from 250 to 400 watts per panel. Understanding these dimensions is crucial for homeowners planning their solar installation, as panel size directly impacts system.

Standard Residential Panels Optimize Space and Handling: The industry-standard 60-cell panel dimensions (65" × 39" × 1.5") aren't arbitrary – they represent the optimal balance between power output, installation ease, and roof space utilization. At 40-46 pounds, they can be safely handled by.

Learning about the types of solar panels, their common dimensions, configurations, and solar installation tips will help you choose and design an efficient system for your home or business. Let's take a closer look at solar system sizes and dimensions. A solar panel is a device designed to convert.

A standard solar panel size (physical dimensions) of a panel determines how many solar cells it contains, which in turn affects how much power it can produce. Large commercial solar modules pack more cells, so they outrun smaller portable models on any solar panel size chart. MNRE (Ministry of New.

Understanding solar panel dimensions is crucial for planning your solar system installation, maximizing efficiency, and ensuring compatibility with your available space. In this blog, we'll break down the standard sizes of solar panels, explain how panel dimensions impact performance, and help you.

This guide highlights those key figures—from the standard solar panel dimensions



commonly installed on rooftops to a detailed size chart that illustrates how wattage increases with additional solar cells. Throughout this guide, simple rules of thumb will help you determine how to size a solar panel.



Standard dimensions for solar panel installation



[Understanding Solar Panel Dimensions In 2025: A ...](#)

Explore the most common solar panel dimensions in 2025, including residential and commercial sizes. Learn how solar panel size ...

[Request Quote](#)

[Solar Panel Dimensions and Weight: A Complete ...](#)

Most homes use 60-cell panels that are roughly 65-by-39 inches. Depending on the brand you buy, you'll find a couple of inches of ...

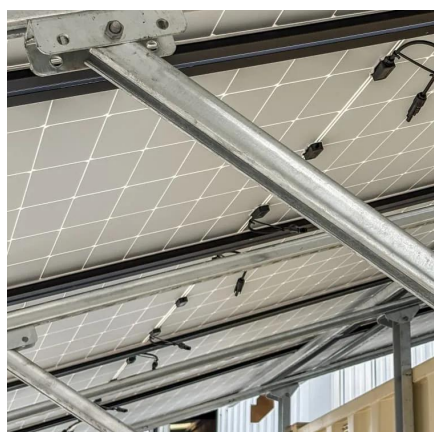
[Request Quote](#)



[Solar Panel Size Guide , Best Panel Size for Your ...](#)

Learn how to choose the ideal solar panel size for your home. Get expert tips, standard dimensions, and a size chart to simplify your ...

[Request Quote](#)



[Know Your Solar Panel Dimensions: A Comprehensive Guide](#)

When selecting solar panels for your home, understanding their size is crucial for optimal performance and space efficiency. Let's dive into the average dimensions of solar ...



[Request Quote](#)



[Solar Panel Dimensions and Weight: A Complete Guide , Angi](#)

Most homes use 60-cell panels that are roughly 65-by-39 inches. Depending on the brand you buy, you'll find a couple of inches of variation on either dimension. For 60-cell ...

[Request Quote](#)

[Detailed Guide to Solar Panel Size & Dimensions](#)

Looking to install solar panels? Learn about solar panel dimensions, wattage, cell types, and how to calculate the system size for your home's energy needs.

[Request Quote](#)



[standard solar photovoltaic panel sizes explained](#)

We will explore the common dimensions, explain how cell count dictates physical size, and provide actionable insights so you can accurately plan your installation, maximize ...

[Request Quote](#)



[What Is Standard Solar Panel Size? A](#)



[Comprehensive Overview](#)

The standard solar panel size typically ranges from 65 inches by 39 inches for residential units, with most panels containing either 60 or 72 cells, which significantly affects ...

[Request Quote](#)



[Solar Panel Size & Dimensions Guide 2025 Complete Specs](#)

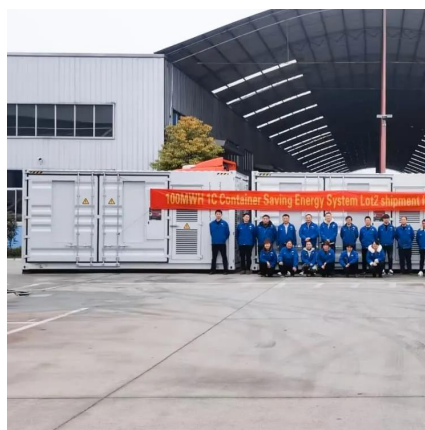
In this comprehensive guide, you'll learn everything you need to know about solar panel sizing, from standard dimensions to weight considerations, helping you determine the ...

[Request Quote](#)

[Perfect Solar Panel Sizes for Your Home \(Expert Sizing Guide\)](#)

Today's residential solar panels come in remarkably consistent sizes, making it easier for homeowners to plan their solar installations. A typical residential solar panel ...

[Request Quote](#)



[Solar Panel Size Guide , Best Panel Size for Your Roof](#)

Learn how to choose the ideal solar panel size for your home. Get expert tips, standard dimensions, and a size chart to simplify your solar decisions.

[Request Quote](#)

[The Ultimate Solar Panel Size Guide for](#)



[Every Homeowner](#)

Solar panel size is a fundamental metric in any solar installation. The physical dimensions of a panel determine the number of solar cells it contains, which directly affects its ...

[Request Quote](#)



Understanding Solar Panel Dimensions In 2025: A Complete Size

...

Explore the most common solar panel dimensions in 2025, including residential and commercial sizes. Learn how solar panel size dimensions affect power, installation, and ...

[Request Quote](#)

[Detailed Guide to Solar Panel Size & Dimensions](#)

Looking to install solar panels? Learn about solar panel dimensions, wattage, cell types, and how to calculate the system size for ...

[Request Quote](#)





Contact Us

For catalog requests, pricing, or partnerships, please visit:

<https://energyinnovationday.pl>

Phone: +48 22 335 1273

Email: info@energyinnovationday.pl

Scan the QR code to contact us via WhatsApp.

