



Single-phase full-bridge three-phase inverter





Overview

This article focuses on comparing three-phase bridge and full-bridge inverters for such high-speed motor drive applications to determine their respective design strengths.

This article focuses on comparing three-phase bridge and full-bridge inverters for such high-speed motor drive applications to determine their respective design strengths.

However, most 3-phase loads are connected in wye or delta, placing constraints on the instantaneous voltages that can be applied to each branch of the load. For the wye connection, all the “negative” terminals of the inverter outputs are tied together, and for the delta connection, the inverter.

Modern electronic systems cannot function without three-phase inverters, which transform DC power into three-phase AC power with adjustable amplitude, frequency, and phase difference. They are essential in several applications, including as power distribution networks, renewable energy systems, and.

A voltage-fed inverter (VFI) or more generally a voltage-source inverter (VSI) is one in which the dc source has small or negligible impedance. The voltage at the input terminals is constant. A current-source inverter (CSI) is fed with source. controlled turn-on and turn-off. bridge or full-bridge.

Power inverters are two types according to the characterization that is single-phase inverters and three-phase inverters. Single-phase inverters are classified into two types, i.e. half bridge inverters and full bridge inverters. In this session, I will be going to explain a single-phase full.

This article will analyze the functioning of the single-phase full-bridge inverter, an electronic apparatus employed for the conversion of direct current (DC) into alternating current (AC). This conversion is accomplished by utilizing a diode bridge circuit, which enables higher efficiency compared.

In this article we will explore the operation of the single-phase full-bridge inverter, an electronic device used to convert direct current (DC) to alternating current (AC). In this installment of the course, we will examine the operation of the single-phase



full-bridge inverter, an electronic.



Single-phase full-bridge three-phase inverter



Single-phase full-bridge inverter

In this article we will explore the operation of the single-phase full-bridge inverter, an electronic device used to convert direct current (DC) to alternating current (AC).

[Request Quote](#)

Full-Bridge Inverter

The simulation model of single-phase full-bridge inverter with R load is shown in Fig. 1.3. In this simulation model, the amplitude is set for $V_{dc} = 200\text{ V}$ and operated at 50 Hz.

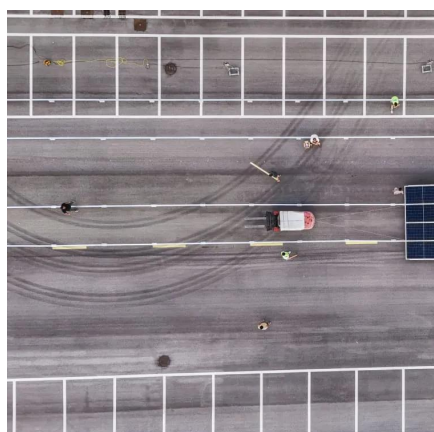
[Request Quote](#)



[Comparison of Inverter Topologies for High-Speed Motor ...](#)

Abstract--This article investigates and compares the performance of three-phase inverters against sets of single-phase full-bridge inverters in motor drive applications.

[Request Quote](#)



[Experiment: Single-Phase Full-Bridge sinewave Inverter](#)

To overcome the disadvantages of the square-wave PWM, another modulation technique is used for controlling the full-bridge inverter. This method, which called the sinusoidal PWM, will ...



[Request Quote](#)



Lecture 23: Three-Phase Inverters

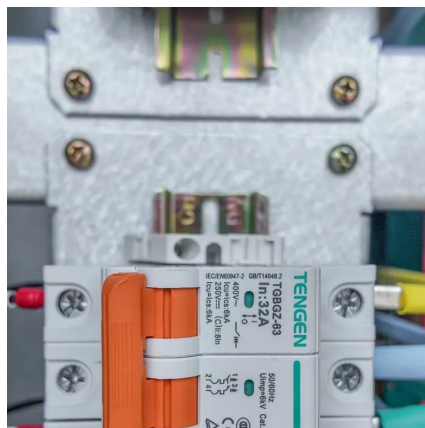
In particular, considering "full-bridge" structures, half of the devices become redundant, and we can realize a 3-phase bridge inverter using only six switches (three half-bridge legs).

[Request Quote](#)

Single-phase full-bridge inverter

This article will analyze the functioning of the single-phase full-bridge inverter, an electronic apparatus employed for the conversion of direct current (DC) into alternating current ...

[Request Quote](#)



CHAPTER 2

bridge or full-bridge configuration. The single-phase units can be joined to have three-phase or multiphase topologies. Some industrial applications of inverters are for adjustable-speed ac ...

[Request Quote](#)

Full Bridge Inverter: Circuit,



Waveforms, Working And Applications

In this single-phase full bridge inverter, I will explain the circuit working principle and waveform to complete this session regarding this full bridge inverter.

[Request Quote](#)



Three-Phase Inverters

The primary features and benefits of three-phase inverters over single-phase inverters are highlighted in this section. We will go through numerous three-phase inverter types, their ...

[Request Quote](#)

CHAPTER4

4.1 Introduction In this chapter the three-phase inverter and its functional operation are discussed. In order to realize the three-phase output from a circuit employing dc as the input voltage a ...

[Request Quote](#)





Contact Us

For catalog requests, pricing, or partnerships, please visit:

<https://energyinnovationday.pl>

Phone: +48 22 335 1273

Email: info@energyinnovationday.pl

Scan the QR code to contact us via WhatsApp.

