



Single-phase full-bridge inverter based on IGBT





Single-phase full-bridge inverter based on IGBT



Exp 06 Study of IGBT Based Single-Phase Full Bridge Inverter

This document outlines Experiment No. 6 conducted by the Department of Electrical Engineering at IIT Patna, focusing on the study of an IGBT-based single-phase full bridge inverter.

[Request Quote](#)



FULL BRIDGE TOPOLOGY SINGLE PHASE INVERTER ...

In its development, it is necessary to implement an inverter to convert DC voltage into alternating current (AC). A single phase full bridge inverter is implemented in this research. The inverter is ...

Power circuit diagram of an IGBT based single ...

Fig. 1 shows the power circuit diagram for a single phase bridge voltage source inverter. Four switches (in two legs) are used to generate an AC ...

[Request Quote](#)



Experiment: Single-Phase Full-Bridge sinewave Inverter

To overcome the disadvantages of the square-wave PWM, another modulation technique is used for controlling the full-bridge inverter. This method, which called the sinusoidal PWM, will ...

[Request Quote](#)



[Request Quote](#)



Full Bridge Inverter: Circuit, Waveforms, Working And Applications

In this single-phase full bridge inverter, I will explain the circuit working principle and waveform to complete this session regarding this full bridge inverter.

[Request Quote](#)

Loss and efficiency comparisons of single-phase full-bridge ...

The purpose of this study is to analyze the performances of the single-phase full-bridge inverter according to different switch structures and to propose a cost-effective structure that depends ...

[Request Quote](#)



Paper Title (use style: paper title)

This paper comprehensively explores the advancements, applications, and performance characteristics of single-phase MOSFET-based and IGBT-based inverters in the field of power ...

[Request Quote](#)

[Full Bridge Inverter: Circuit, Waveforms,](#)



Working ...

In this single-phase full bridge inverter, I will explain the circuit working principle and waveform to complete this session regarding this ...

[Request Quote](#)



DESIGN AND IMPLEMENTATION OF SINGLE PHASE ...

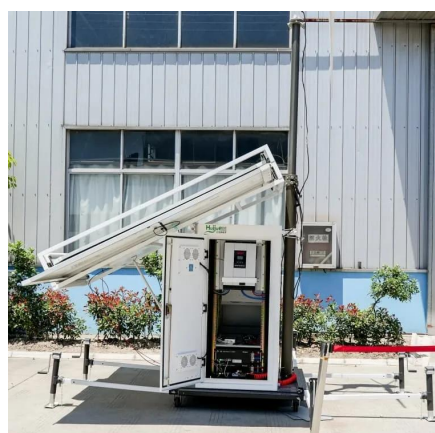
In this project, by using Pulse Width Modulation we are obtained the output voltage waveform of single phase Full Bridge with R and RL load and single phase half bridge with R and RL load.

[Request Quote](#)

Single phase IGBT inverter under sinusoidal PWM control

Circuit diagram of single -phase bridge inverter. Based on the operation of switches (S 1, S 2, S 3, S 4: ON/OFF-state) the operating principle of the inverter is explained below briefly.

[Request Quote](#)



Power circuit diagram of an IGBT based single phase full-bridge inverter.

Fig. 1 shows the power circuit diagram for a single phase bridge voltage source inverter. Four switches (in two legs) are used to generate an AC waveform at the output from the DC source.

[Request Quote](#)

CHAPTER 2



bridge or full-bridge configuration. The single-phase units can be joined to have three-phase or multiphase topologies. Some industrial applications of inverters are for. analyzed in detail. The ...

[Request Quote](#)





Contact Us

For catalog requests, pricing, or partnerships, please visit:

<https://energyinnovationday.pl>

Phone: +48 22 335 1273

Email: info@energyinnovationday.pl

Scan the QR code to contact us via WhatsApp.

