



Simple inverter output voltage is low





Overview

If the voltage is low, charge the battery or replace it if needed. Checking fuses is important when the inverter won't turn on. Look for blown fuses that can stop power flow. Replace any blown fuses with the right ratings to avoid too much current. Also, check all connections for.

If the voltage is low, charge the battery or replace it if needed. Checking fuses is important when the inverter won't turn on. Look for blown fuses that can stop power flow. Replace any blown fuses with the right ratings to avoid too much current. Also, check all connections for.

The phrase inverter low output gets thrown around a lot, but many people misunderstand what it really means — and that misunderstanding often leads to the wrong solution. At a basic level, inverter low output describes a situation where an inverter is not delivering the amount of usable power it is.

When your inverter fails to deliver the standard 220V or 110V needed for proper appliance operation, understanding the root cause becomes essential for a quick fix. An inverter's primary job is converting DC power from batteries into AC power for household use. When this conversion produces voltage.

However, voltage instability, particularly low voltage issues, can lead to system malfunctions, equipment failure, and operational disruptions. Understanding the causes and implementing effective solutions can help maintain inverter performance and prevent costly downtime. In this article, we.

By spotting issues like an inverter not starting or having output voltage problems, you can fix them. This ensures you have power when you need it most. Recognize the common faults causing inverters to fail, including faulty power switches and loose battery connections. Be aware of the symptoms of.

If your power inverter fails to turn on, there are a few potential causes to investigate: Ensure the DC input cables are securely connected to the battery terminals and inverter. Loose connections prevent proper current flow. Check for corroded or damaged terminals and clean or replace as needed.

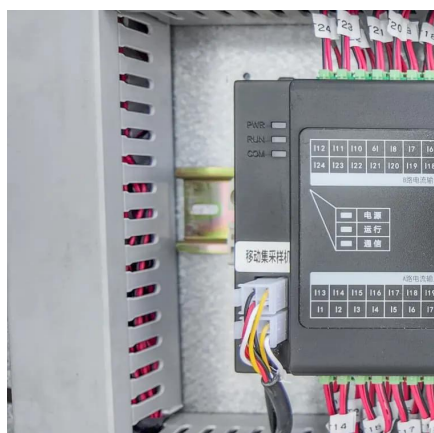
Troubleshoot low voltage output quickly in 15 minutes by identifying common



causes—discover how to restore stable power fast. To quickly fix low voltage output, start by inspecting your power source and making sure connections are tight and secure. Test the outlet with a multimeter to confirm.



Simple inverter output voltage is low



[Why Is My Inverter Turning On but Giving No Output? A ...](#)

In most cases, the problem is simple and fixable without calling a technician. This guide will walk you through why your inverter turns on but gives no output, what you can check at home, and ...

[Request Quote](#)

[SOLVED]

Pure sine wave inverters can stabilize the output voltage by changing the bus voltage and don't change the PWM signal that is fed to the full bridge driver. Other option is to ...

[Request Quote](#)



[How to Address Inverter Low Voltage Issues for Reliable ...](#)

In this article, we explore practical strategies to address inverter low voltage issues, ensuring reliable and efficient operation in demanding environments. Inverter low voltage is a ...

[Request Quote](#)

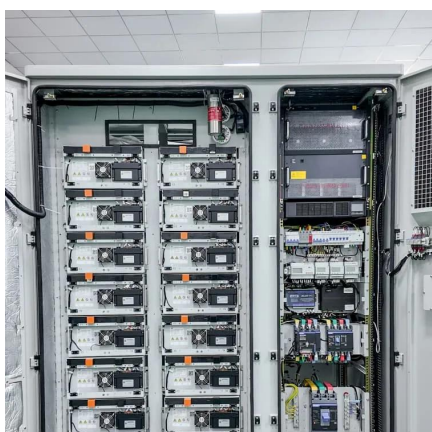


[Why Does Power Inverter Output Power Not Reach Rated Power](#)

Many users wonder why their inverter's output power falls short of the advertised capacity. In this blog post, we'll break down the possible reasons, clear up common ...



[Request Quote](#)



[Power Inverter Troubleshooting - Common ...](#)

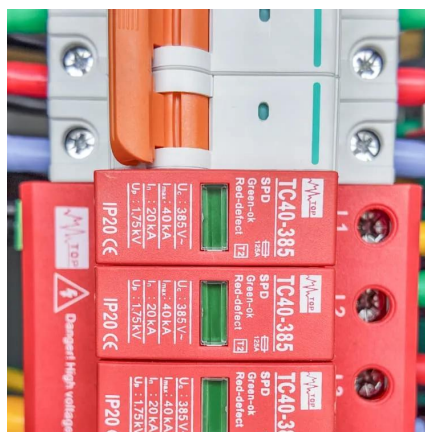
Overloading the inverter by connecting appliances that draw too much power is a frequent cause of problems. 1. Inverter Won't Turn ...

[Request Quote](#)

Power Inverter Troubleshooting - Common Problems and How to ...

Overloading the inverter by connecting appliances that draw too much power is a frequent cause of problems. 1. Inverter Won't Turn On. If your power inverter fails to turn on, ...

[Request Quote](#)



Voltage Troubles? A Guide to Diagnosing Inverter Low Voltage ...

Many people face issues with inverter low voltage at some point in their lives. In this blog post, we will guide you on how to diagnose and potentially fix these problems.

[Request Quote](#)

[Troubleshooting Power Inverter Issues -](#)



[Online Tool Guides](#)

By spotting issues like an inverter not starting or having output voltage problems, you can fix them. This ensures you have power when you need it most. Recognize the ...

[Request Quote](#)



[Quick Wins: Low Voltage Output Causes in 15 Minutes](#)

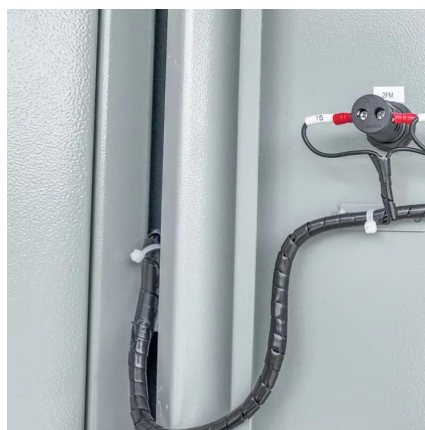
Troubleshoot low voltage output quickly in 15 minutes by identifying common causes--discover how to restore stable power fast.

[Request Quote](#)

Understanding Inverter Low Output: Causes, Solutions, and Real ...

In simple language, it means the inverter's actual output voltage, current, or power capacity is lower than expected under normal operating conditions. That gap between ...

[Request Quote](#)



[How to Address Inverter Low Voltage Issues for ...](#)

In this article, we explore practical strategies to address inverter low voltage issues, ensuring reliable and efficient operation in demanding ...

[Request Quote](#)

[Inverter Output Low Voltage Problem:](#)



[Causes And Solutions](#)

Let's explore the main reasons behind inverter output low voltage problems and how to address each one effectively.

[Request Quote](#)



[Troubleshooting Power Inverter Issues - Online ...](#)

By spotting issues like an inverter not starting or having output voltage problems, you can fix them. This ensures you have power when ...

[Request Quote](#)



Contact Us

For catalog requests, pricing, or partnerships, please visit:

<https://energyinnovationday.pl>

Phone: +48 22 335 1273

Email: info@energyinnovationday.pl

Scan the QR code to contact us via WhatsApp.

