



# Regenerative Grid-connected Inverter





## Overview

---

That's why researchers at the Pacific Northwest National Laboratory (PNNL) and their collaborators created new models that allow power system engineers to evaluate how a new technology, the grid-forming inverter, would work on the grid to improve grid stability.

That's why researchers at the Pacific Northwest National Laboratory (PNNL) and their collaborators created new models that allow power system engineers to evaluate how a new technology, the grid-forming inverter, would work on the grid to improve grid stability.

There is a rapid increase in the amount of inverter-based resources (IBRs) on the grid from Solar PV, Wind, and Batteries. All of these technologies are Inverter-based Resources (IBRs). Source: Lin, Yashen, Joseph H. Eto, Brian B. Johnson, Jack D. Flicker, Robert H. Lasseter, Hugo N. Villegas Pico.

That's why researchers at the Pacific Northwest National Laboratory (PNNL) and their collaborators created new models that allow power system engineers to evaluate how a new technology, the grid-forming inverter, would work on the grid to improve grid stability. This effort was conducted under the.

In the newly published Research Roadmap on Grid-Forming Inverters Inverters provide the interface between the grid and energy sources like solar panels, wind turbines, and energy storage. When there is a large disturbance or outage on the grid, conventional inverters will shut off power to these.

Grid-forming inverters (GFMI) are recognized as critical enablers for the transition to power systems with high renewable energy penetration. Unlike grid-following inverters, which rely on phase-locked loops (PLLs) for synchronization and require a stable grid connection, GFMI internally.

Inverters are the technological backbone of the future energy grid! \*) Energy Charts - Installed net capacity for electricity generation in Germany in 2020; Transmission system operators' data on prequalified battery storage for primary control power; Derived from 2018 Annual Report on Storage.

Grid strength in a power system refers to its ability to withstand disturbances and



maintain stable operation without significant fluctuations in voltage and frequency. Additionally, GFL IBRs lack certain capabilities, such as operating independently or assisting in restarting the grid after a.



## Regenerative Grid-connected Inverter



### [Grid-Forming Inverter-Based Resource Research Landscape](#)

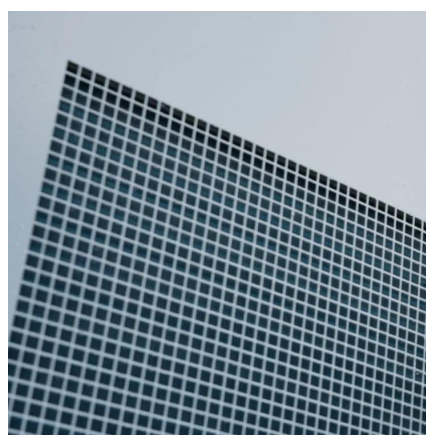
Traditional large-scale synchronous generators found inside coal and natural gas plants are being replaced with inverter-based resource (IBR) technologies. This transition to an IBR-dominant ...

[Request Quote](#)

### [SmarterE Grid-forming Converters Fraunhofer ISE](#)

Inverters are the technological backbone of the future energy grid!

[Request Quote](#)



### **A comprehensive review of grid-connected inverter topologies ...**

This comprehensive review examines grid-connected inverter technologies from 2020 to 2025, revealing critical insights that fundamentally challenge industry assumptions ...

[Request Quote](#)

### [Grid-Forming Inverters: A Comparative Study](#)

This approach ensures stable operation in both islanded and grid-connected modes, providing essential grid support functions such as ...

[Request Quote](#)



## [Introduction to Grid Forming Inverters](#)

Why do we need Grid-forming (GFM) Inverters in the Bulk Power System? There is a rapid increase in the amount of inverter-based resources (IBRs) on the grid from Solar PV, Wind, ...

[Request Quote](#)



## **Grid-connected photovoltaic inverters: Grid codes, topologies and**

The future of intelligent, robust, and adaptive control methods for PV grid-connected inverters is marked by increased autonomy, enhanced grid support, advanced fault tolerance, ...

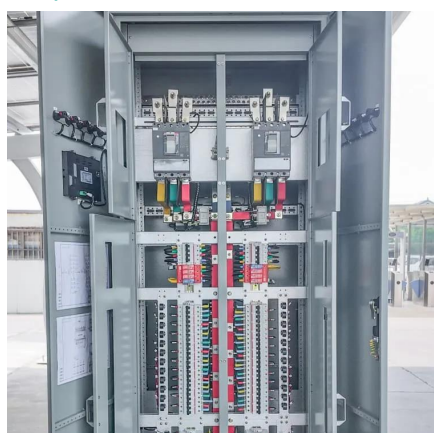
[Request Quote](#)



## [Powering On with Grid-Forming Inverters](#)

Learn about the roadmap to use renewable energy to jump-start the grid by using an essential piece of connection equipment known as an inverter.

[Request Quote](#)



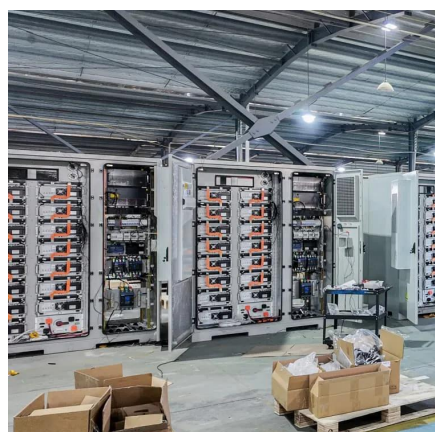
## [Grid connected improved sepic converter](#)



[with ...](#)

To overcome these challenges, this paper presents a grid-connected improved SEPIC converter integrated with an intelligent MPPT ...

[Request Quote](#)



### [New Grid-Forming Inverter Models Help Utilities Plan for a](#)

To preserve the grid's stability, researchers have begun developing grid-forming inverters, which aim to control voltage rather than current. They also enable automated control ...

[Request Quote](#)

### **Grid connected improved sepic converter with intelligent mppt ...**

To overcome these challenges, this paper presents a grid-connected improved SEPIC converter integrated with an intelligent MPPT strategy for railway energy storage ...

[Request Quote](#)



### [Grid-Forming Inverters: A Comparative Study](#)

This approach ensures stable operation in both islanded and grid-connected modes, providing essential grid support functions such as frequency and voltage regulation. Its ...

[Request Quote](#)

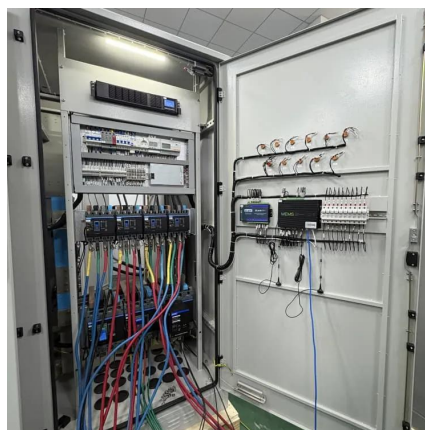
### **A Review of Grid-Connected Inverters**



## and Control Methods ...

Beginning with an introduction to the fundamentals of grid-connected inverters, the paper elucidates the impact of unbalanced grid voltages on their performance.

[Request Quote](#)



## [New Grid-Forming Inverter Models Help Utilities ...](#)

To preserve the grid's stability, researchers have begun developing grid-forming inverters, which aim to control voltage rather than ...

[Request Quote](#)



## Contact Us

---

For catalog requests, pricing, or partnerships, please visit:

<https://energyinnovationday.pl>

Phone: +48 22 335 1273

Email: [info@energyinnovationday.pl](mailto:info@energyinnovationday.pl)

Scan the QR code to contact us via WhatsApp.

