



# Rectifier inverter cabinet manufacturers





## Rectifier inverter cabinet manufacturers



### [What is a Rectifier? Its Functions, Types, and Applications](#)

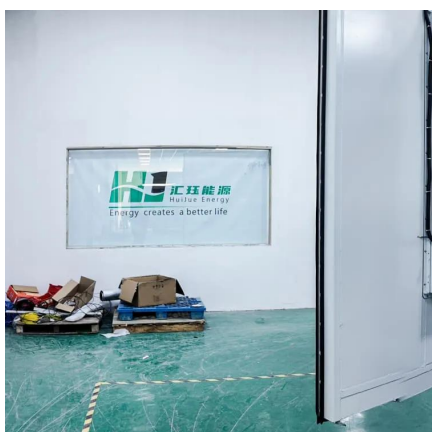
While a battery stores DC power, a rectifier converts AC to DC. A rectifier provides DC output for various applications, whereas a battery is a source of stored DC energy.

[Request Quote](#)

### [What is Rectifier Circuit and Types of Rectifier Circuit](#)

Learn what is a rectifier circuit, how it works, and explore all types of rectifier circuits including half-wave, full-wave, and bridge rectifiers.

[Request Quote](#)



### [What is a Rectifier Diode : Working & Its Applications](#)

A rectifier diode operates based on the principle of unidirectional current flow, meaning it allows current to pass in one direction while blocking it in the opposite direction.

[Request Quote](#)

### [How Rectifiers Work: Types of Rectifiers and Their Uses](#)

The main purpose of a rectifier is to convert AC (alternating current) to DC (direct current), which is essential for powering most electronic devices that require steady, one-directional voltage.



[Request Quote](#)



## Rectifiers and their Applications

What is a Rectifier? A rectifier is a semiconductor device that allows current to flow in one direction, converting alternating current (AC) to direct current (DC).

[Request Quote](#)

## [Understanding What a Rectifier Is and How It Works](#)

A rectifier is an essential device in electrical systems. Its primary function is to convert alternating current (AC) into direct current (DC), which is necessary for powering most ...

[Request Quote](#)



## Types of Rectifier

A Rectifier is an electronic device that converts the alternating current (AC) into direct current (DC) by allowing a current to flow through the device in one direction only using ...

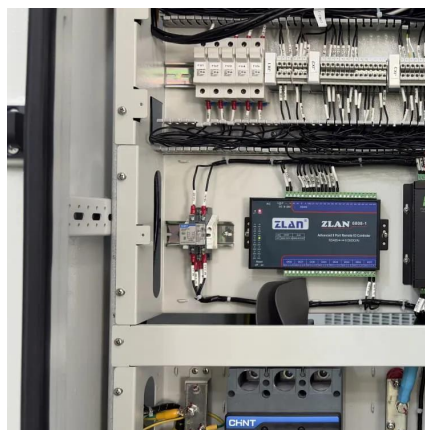
[Request Quote](#)

## Rectifier Basics



A rectifier is an electrical device that changes alternating current (AC), which switches direction periodically, into direct current (DC), which flows in a single direction.

[Request Quote](#)



### [Rectifiers - Electricity - Magnetism](#)

In essence, a rectifier is a device that 'rectifies' or converts an AC signal into a DC signal. AC is an electrical current that periodically reverses direction, while DC flows ...

[Request Quote](#)



## Rectifier

A rectifier is an electrical device that converts alternating current (AC), which periodically reverses direction, to direct current (DC), which flows in only o

[Request Quote](#)



## Rectifiers Definition, Working Principle, Types & Applications ...

What is a Rectifier? A rectifier is a circuit made up of one or more diodes that only allow current to flow in one direction. It transforms alternating current to direct current.

[Request Quote](#)



## Rectifier



A rectifier is an electrical device that converts alternating current (AC), which periodically reverses direction, to direct current (DC), which flows in only one direction. The process is known as ...

[Request Quote](#)



## Rectifier

A rectifier is an electrical device that converts an Alternating Current (AC) into a Direct Current (DC) by using one or more P-N junction diodes.

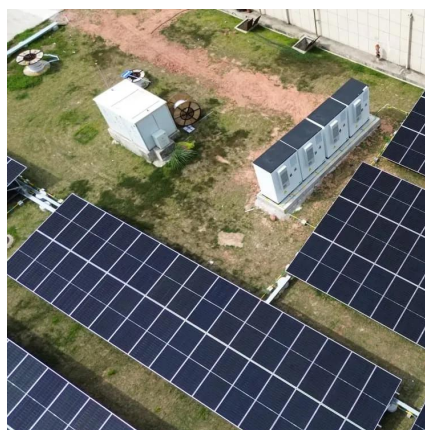
[Request Quote](#)



## [Rectifier , Types, Definition, & Facts , Britannica](#)

rectifier, device that converts alternating electric current into direct current. It may be an electron tube (either a vacuum or a gaseous type), vibrator, solid-state device, or ...

[Request Quote](#)



## [Rectifier: What It Is? How Does It Work?](#)

The rectifier is a circuit embedded in your device that converts the restless AC supply coming to your house into a steady DC supply, so that your devices can function properly.

[Request Quote](#)



## [Rectifier - Definition, Types, Applications](#)



A rectifier is an electrical device that converts alternating current (AC) to direct current (DC). It is used to provide DC power for electronic devices and circuits.

[Request Quote](#)



### [What is Rectifier? Types of Rectifiers and their Operation](#)

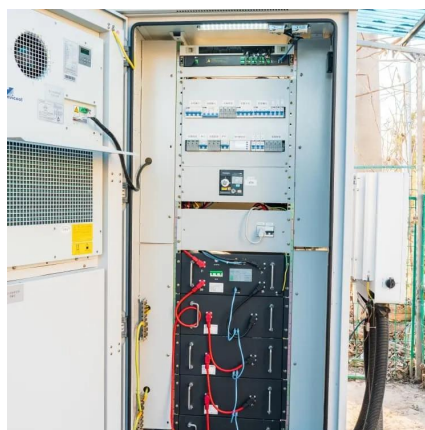
Bridge rectifier is the most commonly used rectifier in electronics and this report will deal with the working and making of one. Simple bridge rectifier circuit is the most popular method for full ...

[Request Quote](#)

### [What is a rectifier, and what are its types?](#)

A rectifier is a very important component in electrical and electronic systems. Its main function is to change alternating current (AC), which changes direction continuously, into ...

[Request Quote](#)



### **Rectifier**

Therefore, the rectifier becomes a very useful component in electronics. This article provides a detailed understanding of the electrical component known as a rectifier, including ...

[Request Quote](#)

### **Rectifier : Definition, Types,**



## Application, Uses and Working ...

Discover what a rectifier is and how it functions to convert alternating current (AC) to direct current (DC). Explore the different types of rectifiers, their applications, and their importance in ...

[Request Quote](#)





## Contact Us

---

For catalog requests, pricing, or partnerships, please visit:

<https://energyinnovationday.pl>

Phone: +48 22 335 1273

Email: [info@energyinnovationday.pl](mailto:info@energyinnovationday.pl)

Scan the QR code to contact us via WhatsApp.

