



Power lines entering the base station should be avoided





Overview

OSHA requires that you keep yourself and your equipment (other than cranes or derricks used in construction) at least 10 feet away from overhead power lines carrying up to 50 kV. Higher-voltage lines require greater clearances. Contact the local electric utility for clearance.

OSHA requires that you keep yourself and your equipment (other than cranes or derricks used in construction) at least 10 feet away from overhead power lines carrying up to 50 kV. Higher-voltage lines require greater clearances. Contact the local electric utility for clearance.

Working with or near power lines can expose workers to electrical hazards, but these dangers can be avoided through safe work practices. These practical steps can prevent injuries from contact with power lines. Conduct a hazard assessment to identify and address potential safety hazards before work.

Overhead and buried power lines can pose serious risks, especially when working with large equipment or tools. Power lines carry high voltages and are usually not insulated, making it possible for workers to suffer burns, electrical flashes or even electrocution if they come into contact with them.

Do not allow human error to override common sense. If you live or work around power lines the tips in this booklet could prevent accidents. If in doubt about specific situations, call the WAPA office i Code and applicable state and local restrictions. Serious accidents involving transmission li es.

When you arrive at a job site, always identify power lines, poles, guy wires, and pad-mounted equipment, and point them out to your crew. Look for overhead lines hidden by trees or buildings. including the service drops that run from utility poles to buildings. Check the site daily because.

on proper safety precautions before starting work. The lines can be de-energized or as dangerous as contacting an overhead p rnate number, call us toll free at 1-888-221-7070.) Having utility lines located before you dig prevents injury from contacting electrical power or natural gas lines, and.

ce equipment gets close to or touches a power line. associated with overhead high-



voltage power lines. Non-electric utility crane operators must contact the local utility company (the distance required to avoid electrical safety boundaries around power lines before work height above the ground can vary, based on power level). Are overhead power lines safe?

Power lines carry high voltages and are usually not insulated, making it possible for workers to suffer burns, electrical flashes or even electrocution if they come into contact with them. To stay safe: Always maintain at least a safe distance from overhead power lines when operating equipment or working in the area.

What are the safety precautions when working on a power line?

4. Follow Lockout/Tagout Procedures Before beginning any work on circuits or equipment near power lines, ensure that all power sources are properly locked out and tagged out. This procedure prevents accidental energization and protects workers. 5.

How far away should you work from power lines?

If your job requires you to work closer than 10 feet from power lines, call the local electric utility well in advance to make safety arrangements. Electrical safety distances given here are minimums. Always use the maximum possible clearance, and clearly mark boundaries to keep workers and equipment the required distance away.

Are buried power lines dangerous?

Avoid Contact with Power Lines Overhead and buried power lines can pose serious risks, especially when working with large equipment or tools. Power lines carry high voltages and are usually not insulated, making it possible for workers to suffer burns, electrical flashes or even electrocution if they come into contact with them.



Power lines entering the base station should be avoided



[Safety Brief Series Working Safely Near Power Lines](#)

Safety Brief Series Working Safely Near Power Lines It is not uncommon to work around power lines. However, the potential hazards to workers. d workers must use extreme caution. ...

[Request Quote](#)

[Essential Power Line Safety Guidelines: Avoid ...](#)

Essential Power Line Safety Guidelines are a set of practices designed to keep workers safe when working near or with power lines. These ...

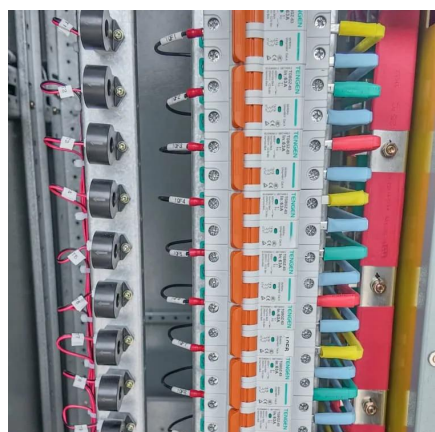
[Request Quote](#)



[Power Line Safety: What You Need To Know , SafetyCulture](#)

Power lines can be extremely dangerous because they carry high voltages of electricity. If you come into contact with a power line, you could be seriously injured or even ...

[Request Quote](#)



[Power Line Safety: What You Need To Know](#)

Power lines can be extremely dangerous because they carry high voltages of electricity. If you come into contact with a power line, you ...

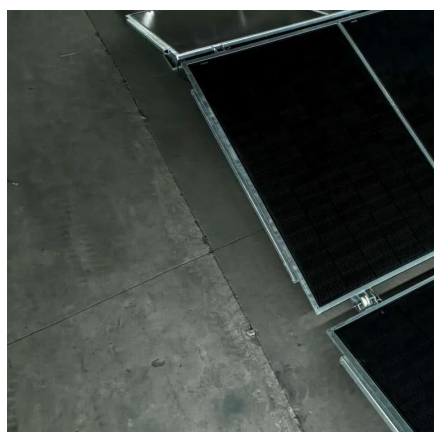
[Request Quote](#)



Electrical Safety Tips for Contractors: Stay Safe Around Power ...

By maintaining a safe distance from power lines, grounding electrical equipment, wearing proper protective clothing and keeping your worksite organized, you'll minimize the ...

[Request Quote](#)



LIVING

Since trees conduct electricity, if one should fall into or close to a power line, the current could follow the tree trunk to the ground and endanger anyone standing near its base.

[Request Quote](#)



[NDLTAP Safety Talk , Working Safely Near Overhead Power ...](#)

Working with or near power lines can expose workers to electrical hazards, but these dangers can be avoided through safe work practices. These practical steps can prevent injuries from ...

[Request Quote](#)



Essential Power Line Safety



Guidelines: Avoid These Critical Risks!

Essential Power Line Safety Guidelines are a set of practices designed to keep workers safe when working near or with power lines. These guidelines address the risks associated with ...

[Request Quote](#)



Work Safely Around Electric Lines

OSHA requires that you keep yourself and your equipment (other than cranes or derricks used in construction) at least 10 feet away from overhead power lines carrying up to 50 kV. Higher ...

[Request Quote](#)

Electrical Safety Tips for Contractors: Stay Safe Around Power Lines

By maintaining a safe distance from power lines, grounding electrical equipment, wearing proper protective clothing and keeping your worksite organized, you'll minimize the ...

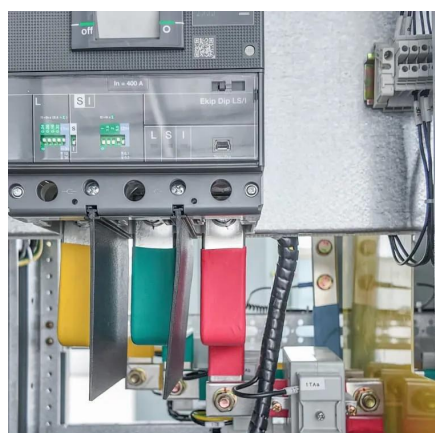
[Request Quote](#)



at least 48 hours Working safely around power lines

This 10-foot radius is known as the 10-foot "Circle of Safety," and it means you, your equipment and tools must stay 10 feet or more away from power lines or you are breaking the law and ...

[Request Quote](#)



Living and Working Around HIGH-



VOLTAGE POWER LINES ...

This distance varies with line operating voltage. Unlike wiring at home, conductors of overhead transmission lines gher voltage lines because contact is more likely. The electrical conductors ...

[Request Quote](#)



Working Safely Near Overhead Power Lines

Working with or near power lines can expose workers to electrical hazards, but these dangers can be avoided through safe work practices. These practical steps can prevent injuries from ...

[Request Quote](#)



Contact Us

For catalog requests, pricing, or partnerships, please visit:

<https://energyinnovationday.pl>

Phone: +48 22 335 1273

Email: info@energyinnovationday.pl

Scan the QR code to contact us via WhatsApp.

