



Power consumption of 5G base stations in London per day





Overview

Investing in the communication infrastructure transition requires significant scientific consideration of challenges, prioritisation, risks and uncertainties. To address these challenges, a bottom-up approach.

How can we improve the energy efficiency of 5G networks?

To improve the energy efficiency of 5G networks, it is imperative to develop sophisticated models that accurately reflect the influence of base station (BS) attributes and operational conditions on energy usage.

What is the role of 5G in the UK?

The simulation results show that 700 MHz and 26 GHz will play an important role in 5G deployment in the UK, which allow base stations to meet short-term and long-term data traffic demands respectively.

Should power consumption models be used in 5G networks?

This restricts the potential use of the power models, as their validity and accuracy remain unclear. Future work includes the further development of the power consumption models to form a unified evaluation framework that enables the quantification and optimization of energy consumption and energy efficiency of 5G networks.

Which frequency bands will play a role in 5G deployment in the UK?

The first argues that 700 MHz and 26 GHz frequency bands will play an important role in 5G deployment in the UK, which enables base stations to meet short- and long-term demand. In order to accelerate the 5G development, the launch of the two spectrum resources should be actively promoted.



Power consumption of 5G base stations in London per day



[Annual energy consumption of 5G networks across the UK.](#)

With the mass construction of 5G base stations, the backup batteries of base stations remain idle for most of the time. It is necessary to explore these massive 5G base station

[Request Quote](#)

[Comparison of Power Consumption Models for 5G Cellular ...](#)

Power consumption models for base stations are briefly discussed as part of the development of a model for life cycle assessment. An overview of relevant base station power ...

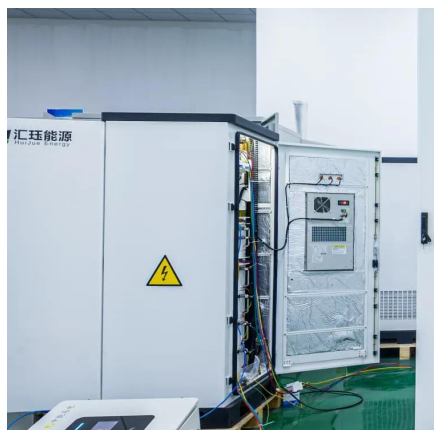
[Request Quote](#)



Comparison of Power Consumption Models for 5G Cellular Network Base

Power consumption models for base stations are briefly discussed as part of the development of a model for life cycle assessment. An overview of relevant base station power ...

[Request Quote](#)



Power consumption - 5G Technology

As 5G networks require much less energy to transmit the same data as 4G, they are more efficient in the ratio of power consumption to traffic. However, 5G's higher speed and ...

[Request Quote](#)



What is 5G Energy Consumption?

With 5G projected to increase capacity up to approximately 1000-fold and high frequency millimeter wave (mmWave) transmission driving exponentially higher cell density, this ...

[Request Quote](#)



[Power consumption based on 5G communication](#)

This paper proposes a power control algorithm based on energy efficiency, which combines cell breathing technology and base station sleep technology to reduce base station energy ...

[Request Quote](#)



[Why does 5g base station consume so much ...](#)

Why does the base station consume electricity? The following presents the results of professional frontline testing, with the power ...

[Request Quote](#)



5G network deployment and the



associated energy consumption ...

In particular, this research took the UK as an example to investigate the spatiotemporal dynamic characteristics of 5G evolution, and further analysed the energy ...

[Request Quote](#)



Why does 5g base station consume so much power and how to ...

Why does the base station consume electricity? The following presents the results of professional frontline testing, with the power consumption of Huawei and ZTE 5G base ...

[Request Quote](#)

[A technical look at 5G energy consumption and performance](#)

Figure 8 depicts the total 5G energy consumption in the same test area during the day. Here, we compare the LTE-only deployment in the left bars, with the LTE and NR ...

[Request Quote](#)



[How Much Power Does 5G Base Station Consume?](#)

The average 5G base station consumes 2.5-4 kW daily - equivalent to powering 40 refrigerators simultaneously. Three factors amplify this: Operators now spend 20-40% of ...

[Request Quote](#)

[Modelling the 5G Energy Consumption](#)



[using Real-world ...](#)

To address this, we propose a novel deep learning model for 5G base station energy consumption estimation based on a real-world dataset. Unlike existing methods, our approach integrates ...

[Request Quote](#)





Contact Us

For catalog requests, pricing, or partnerships, please visit:

<https://energyinnovationday.pl>

Phone: +48 22 335 1273

Email: info@energyinnovationday.pl

Scan the QR code to contact us via WhatsApp.

