



Power consumption of 4G and 5G base stations





Overview

Are 5G base stations causing more energy consumption?

However, Li says 5G base stations are carrying five times the traffic as when equipped with only 4G, pushing up power consumption. The carrier is seeking subsidies from the Chinese government to help with the increased energy usage.

How much energy does a 4G ran consume?

In 2020, we estimate that 4G RANs consume 112 GWh, which corresponds to 0.13% of the annual electricity consumption in Belgium (i.e., 84.7 TWh). In 2025, the total energy consumption goes up, especially with extensive 5G deployments, as shown in Fig. 7a.

Does 4G consume more energy than 5g?

If 4G is additionally decommissioned, the total RAN energy consumption can drop, but this scenario is very unlikely by 2025. Therefore, we show that concurrently operating country-wide 4G and 5G RANs consumes more energy than using only one generation.

Do 5G Rans consume more energy?

We apply this method to the RANs in Belgium over the 2020–2025 period for six scenarios of 5G deployment. Results show that the static energy consumption accounts for a major part of the total RAN energy consumption, which implies that concurrently operating 4G and 5G RANs consumes more energy than using only one generation.



Power consumption of 4G and 5G base stations



How do I refresh an Excel Power Query using Power Automate ...

0 I have data being pulled from a SharePoint list to an Excel file and I'm trying to use Power Automate online to create a scheduled flow that will trigger the "Refresh All" button ...

[Request Quote](#)

powerbi

In Power Automate, within the Power BI connector, you'll find the "Run a query against a dataset" action. Take note: this can only return one table at a time with max of 1,000 ...

[Request Quote](#)



Power Automate

I have created a Flow in Power automate, have used a Refresh a Power BI dataset component, there is no issue in terms of functionality as such and I am able to refresh ...

[Request Quote](#)

[Machine Learning and Analytical Power Consumption ...](#)

pose a novel model for a realistic characterisation of the power consumption of 5G multi-carrier B.

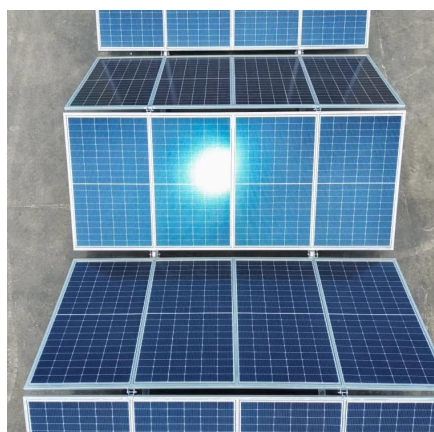
[Request Quote](#)



[5G base stations use a lot more energy than 4G ...](#)

A typical 5G base station consumes up to twice or more the power of a 4G base station, writes MTN Consulting Chief Analyst Matt ...

[Request Quote](#)



power automate

0 Creating a flow in Power Automate: New Step
Choose the OneDrive "Get file content" action File
= /Documents/Folder/File.json Infer Content Type
= Yes New Step Choose ...

[Request Quote](#)



5G network deployment and the associated energy consumption ...

However, the total power consumption of a single 5G base station is about four times that of a single 4G base station and considering the high density the overall power ...

[Request Quote](#)



[How to solve the network error when](#)



[using a patch function?](#)

Below are some of the reasons you get the network error when using a patch function in Microsoft Power Apps applications: One of the columns in your SharePoint list is ...

[Request Quote](#)



[Why does 5g base station consume so much ...](#)

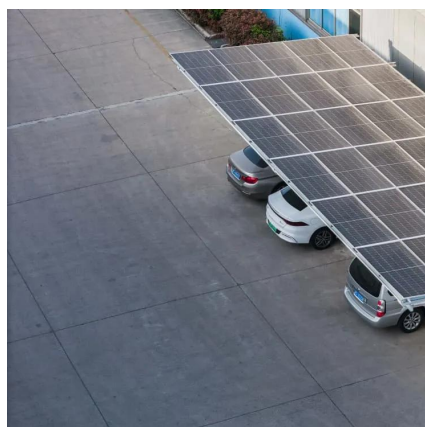
Huawei and ZTE's 5G base stations have a 100% load power consumption of 3852.5W and 3674.85W, respectively, while ZTE's 4G ...

[Request Quote](#)

powerbi

I have a table PRODUCTS in Power BI that has a column named Product_Group. When I go to transform data I can see all the Product groups. (DirectQuery connection, it is ...

[Request Quote](#)



How to use Power Automate flows to manage user access to ...

Send an HTTP request to SharePoint action in Power automate flows works with SharePoint REST APIs. Follow below Microsoft official documentations for SharePoint REST ...

[Request Quote](#)

[A technical look at 5G energy](#)



[consumption and performance](#)

To understand this, we need to look closer at the base station power consumption characteristics (Figure 3). The model shows that there is significant energy consumption in the ...

[Request Quote](#)



[Modelling the 5G Energy Consumption using Real-world ...](#)

To address this, we propose a novel deep learning model for 5G base station energy consumption estimation based on a real-world dataset. Unlike existing methods, our approach integrates ...

[Request Quote](#)

Data Source Credentials and Scheduled Refresh greyed out in ...

Data Source Credentials and Scheduled Refresh greyed out in Power BI Service Asked 4 years, 8 months ago Modified 3 years, 4 months ago Viewed 18k times

[Request Quote](#)



5G base stations use a lot more energy than 4G base stations: MTN

A typical 5G base station consumes up to twice or more the power of a 4G base station, writes MTN Consulting Chief Analyst Matt Walker in a new report entitled " Operators ...

[Request Quote](#)

[A technical look at 5G energy](#)



consumption and performance

We use on-site up-to-date measurements to determine power models of 4G BSs, showing a linear relationship between power consumption and data traffic with a static traffic ...

[Request Quote](#)



Why does 5g base station consume so much power and how to ...

Huawei and ZTE's 5G base stations have a 100% load power consumption of 3852.5W and 3674.85W, respectively, while ZTE's 4G base station has a power consumption ...

[Request Quote](#)

Running Python scripts in Microsoft Power Automate Cloud

I use Power Automate to collect responses from a Form and send emails based on the responses. The main objective is to automate decision-making using Python to approve or ...

[Request Quote](#)



Evaluation and projection of 4G and 5G RAN energy footprints

We use on-site up-to-date measurements to determine power models of 4G BSs, showing a linear relationship between power consumption and data traffic with a static traffic ...

[Request Quote](#)

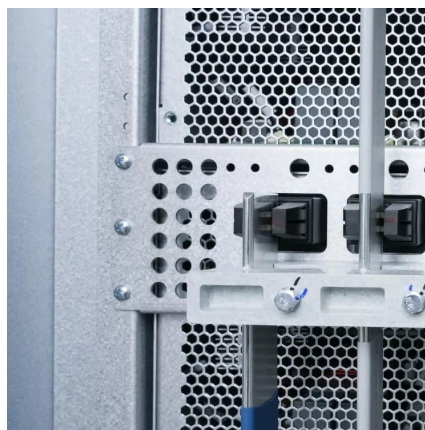
Final draft of deliverable



D.WG3-02-Smart Energy Saving of ...

This technical report explores how network energy saving technologies that have emerged since the 4G era, such as carrier shutdown, channel shutdown, symbol shutdown etc., can be ...

[Request Quote](#)



[Extract Value from Array in Power Automate](#)

Extract Value from Array in Power Automate Asked 1 year, 2 months ago Modified 9 months ago Viewed 6k times

[Request Quote](#)

What is 5G Energy Consumption?

With 5G projected to increase capacity up to approximately 1000-fold and high frequency millimeter wave (mmWave) transmission driving exponentially higher cell density, this ...

[Request Quote](#)



[Power consumption based on 5G communication](#)

At present, 5G mobile traffic base stations in energy consumption accounted for 60% ~ 80%, compared with 4G energy consumption increased three times. In the future, high-density ...

[Request Quote](#)



Contact Us

For catalog requests, pricing, or partnerships, please visit:

<https://energyinnovationday.pl>

Phone: +48 22 335 1273

Email: info@energyinnovationday.pl

Scan the QR code to contact us via WhatsApp.

