



Power 5G base station





Power 5G base station



Why does 5g base station consume so much power and how to ...

5G base stations use high power consumption and high RF signals, which require more signal processing for digital and electromechanical units, and also put greater pressure ...

[Request Quote](#)

[Selecting the Right Supplies for Powering 5G Base Stations](#)

These tools simplify the task of selecting the right power management solutions for these devices and, thereby, provide an optimal power solution for 5G base stations components.

[Request Quote](#)



[Mitsubishi Electric Achieves World's First Performance ...](#)

Mitsubishi Electric successfully verified its new PAM's performance in a demonstration using 5G-Advanced communication signals for the first time in the world. 1 ...

[Request Quote](#)



Comparison of Power Consumption Models for 5G Cellular Network Base

Power consumption models for base stations are briefly discussed as part of the development of a model for life cycle assessment. An overview of relevant base station power ...



[Request Quote](#)



5G Base Station Power Supply System: NextG Power's Cutting ...

Quick to Deploy, Built to Last: Our all-in-one design packs power, battery management, and lightning protection into a compact unit, making setup a snap. Plus, it's engineered for 24/7 ...

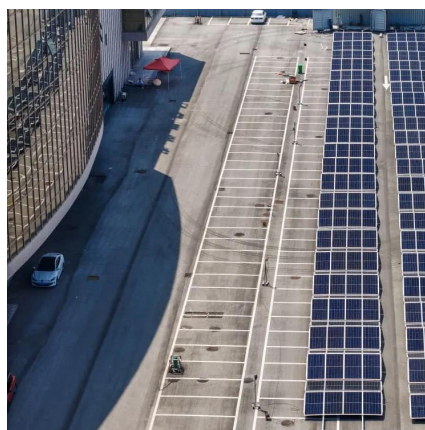
[Request Quote](#)



Complete Guide to 5G Base Station Construction , Key Steps, ...

Explore how 5G base stations are built--from site planning and cabinet installation to power systems and cooling solutions. Learn the essential components, technologies, and ...

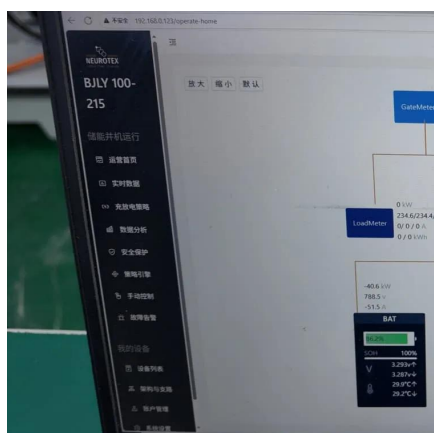
[Request Quote](#)



Building better power supplies for 5G base stations

Building better power supplies for 5G base stations Authored by: Alessandro Pevere, and Francesco Di Domenico, both at Infineon Technologies Infineon Technologies - Technical ...

[Request Quote](#)



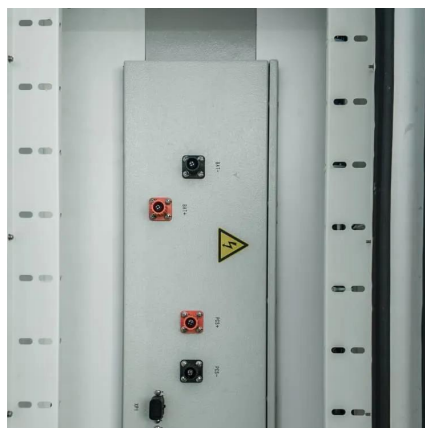
Improved Model of Base Station Power



[System for the Optimal](#)

The optimization of PV and ESS setup according to local conditions has a direct impact on the economic and ecological benefits of the base station power system. An ...

[Request Quote](#)



[Power Consumption Modeling of 5G Multi-Carrier Base ...](#)

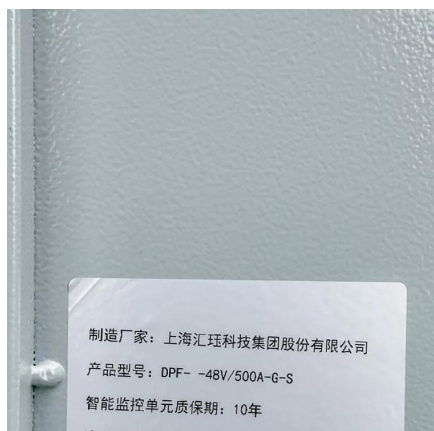
Importantly, this study item indicates that new 5G power consumption models are needed to accurately develop and optimize new energy saving solutions, while also considering the ...

[Request Quote](#)

[Comparison of Power Consumption Models for 5G Cellular ...](#)

Power consumption models for base stations are briefly discussed as part of the development of a model for life cycle assessment. An overview of relevant base station power ...

[Request Quote](#)



[Energy Management of Base Station in 5G and B5G: Revisited](#)

Since mmWave base stations (gNodeB) are typically capable of radiating up to 200-400 meters in urban locality. Therefore, high density of these stations is required for actual 5G deployment, ...

[Request Quote](#)



Contact Us

For catalog requests, pricing, or partnerships, please visit:

<https://energyinnovationday.pl>

Phone: +48 22 335 1273

Email: info@energyinnovationday.pl

Scan the QR code to contact us via WhatsApp.

