



Outdoor wireless base station solution





Overview

This product is based on the advanced multi-core ARM and FPGA scheme, and adopts the integrated design of 5G BBU and RRU to realize the complete 5G NR wireless access network function, which can quickly and quickly establish a 5G wireless network with large bandwidth, low delay.

This product is based on the advanced multi-core ARM and FPGA scheme, and adopts the integrated design of 5G BBU and RRU to realize the complete 5G NR wireless access network function, which can quickly and quickly establish a 5G wireless network with large bandwidth, low delay.

TP-LINK's 5GHz 300Mbps * Outdoor Wireless Base Station is specifically designed to provide an effective solution for outdoor wireless networking applications. With its centralized management platform and high degree of flexibility, it is the ideal choice for providing point-to-point.

ANDREW provides robust and precise structural support solutions for networks, including premium systems that optimize antenna performance while delivering significant long-term operational cost savings. Engineered to comply with EIA/TIA codes and ISO-9001 standards, our solutions provide network.

LNK-AP80 is an Qualcomm Solution 11ac high power industrial use Outdoor CPE with the next generation 802.11ac Wi-Fi standard, combined 1200Mbps Wi-Fi speed over 2.4GHz (300Mbps) and 5GHz (900Mbps), equipped Gigabit WAN port, fast Ethernet data rate make more than 100 end users can access into it to.

In order to reduce the WISP maintenance cost, we integrate 8kV Ethernet lightning protection module into the S1200AX. This feature along with high durable temperature range and IP65 housing make it far more robust working in outdoor environment. New WisOS with NMS Support The new fresh WisOS web.

Effortless setup, superior speed, and unwavering connection - bridging miles made easy! TP-LINK's 2.4GHz 300Mbps Outdoor Wireless Base Station is specifically designed to provide an effective solution for outdoor wireless networking applications. With its centralized management platform and high.

We do not store credit card details nor have access to your credit card information.



Long Range Wireless Base Station Kit connects devices up to 2+ miles. Weather-resistant, multiple compliance, and versatile mounting for outdoor deployments.



Outdoor wireless base station solution



TP-LINK WBS210 , LinkDataGuard

TP-LINK's 2.4GHz 300Mbps Outdoor Wireless Base Station is specifically designed to provide an effective solution for outdoor wireless networking ...

[Request Quote](#)

[2.4GHz 300Mbps Outdoor Wireless Base Station](#)

Up to 8% cash back · TP-LINK's 2.4GHz 300Mbps Outdoor Wireless Base Station is specifically designed to provide an ...

[Request Quote](#)



[Dahua DH-PFWB5-90N 5Ghz N300 Outdoor ...](#)

The Dahua DH-PFWB5-90N is an outdoor wireless base station designed for reliable 5 GHz connectivity. Featuring an integrated 2x2 MIMO radio, it ...

[Request Quote](#)



[5GHz 300Mbps Outdoor Wireless Base Station](#)

The TP-LINK Outdoor Wireless Base Station pairs professional performance with user-friendly design, making it the perfect solution for both business and home users.



[Request Quote](#)



Outdoor wireless , ANDREW

The ANDREW 360-degree wind load-reducing design solves the critical challenge of wind load management for mobile network operators ...

[Request Quote](#)



[Dahua DH-PFWB5-90N 5Ghz N300 Outdoor Wireless Base Station](#)

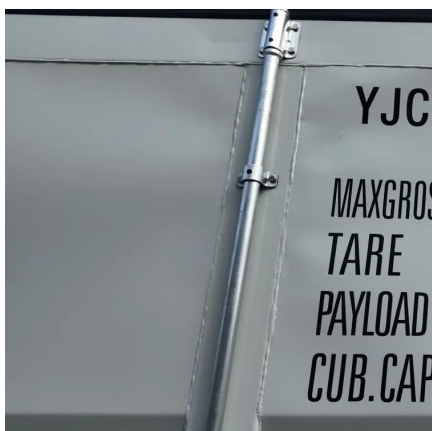
The Dahua DH-PFWB5-90N is an outdoor wireless base station designed for reliable 5 GHz connectivity. Featuring an integrated 2x2 MIMO radio, it operates within the 5.150 to 5.850 ...

[Request Quote](#)



[Buy the TP-Link PHAROS WBS210 2.4GHz 300Mbps Outdoor ...](#)

Shipping CostsShipping Security & InsuranceDelivery EstimatesOverseas shipmentsThe delivery time-frame (in days) for each product we sell is detailed on the individual product page just to the right of the main product image. From when you place your order, in-stock products typically arrive within 7-10 working days for all countries that we ship to. See more on pbtech Brand: TP-LinkAvailability: Out of stock





Videos of Outdoor Wireless Base Station Solution

Watch video0:28FTTA Fiber Optic Solution , HIGHLIGHT Outdoor Base Station Connectivity HIGHLIGHT Fiber Optic Co., Ltd1 views3 weeks agoWatch video3:10How to Setup Your Arlo Base Station - Setting up Arlo Smart Hub , Full Guide Devices Help & Support18.8K viewsMay 16, 2024Watch video3:49Ring Alarm Pro Base Station (newest model) UNBOXING & REVIEW Just A Dad Tips1.2K views10 months agoWatch full videointerstatepumpandtank

Long Range Wireless Base Station Kit - Outdoor Wi-Fi Solution

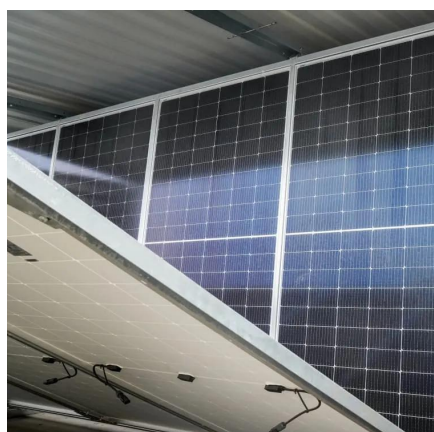
Long Range Wireless Base Station Kit connects devices up to 2+ miles. Weather-resistant, multiple compliance, and versatile mounting for outdoor deployments.

[Request Quote](#)

[2.4GHz 300Mbps Outdoor Wireless Base Station](#)

TP-LINK's 2.4GHz 300Mbps Outdoor Wireless Base Station is specifically designed to provide an effective solution for outdoor wireless networking applications.

[Request Quote](#)



Buy the TP-Link PHAROS WBS210 2.4GHz 300Mbps Outdoor Wireless Base

Effortless setup, superior speed, and unwavering connection - bridging miles made easy! TP-LINK's 2.4GHz 300Mbps Outdoor Wireless Base Station is specifically designed to provide an ...

[Request Quote](#)

[Unity\(TM\) Outdoor Integrated Base](#)



Station 5W

This compact base station integrates the 5G baseband module and radio module, pre-installed the SageRAN`s Engine(TM) 5G L2 L3 software, to provide a high performing 5G wireless access ...

[Request Quote](#)



TP-LINK WBS210 , LinkDataGuard

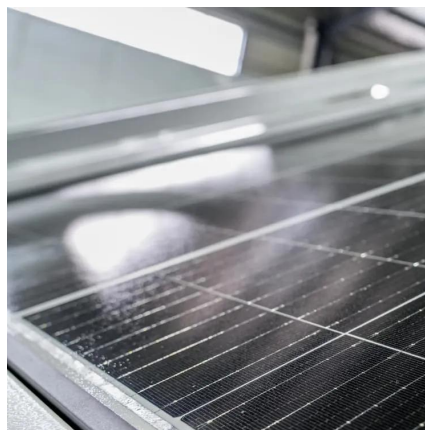
TP-LINK's 2.4GHz 300Mbps Outdoor Wireless Base Station is specifically designed to provide an effective solution for outdoor wireless networking applications.

[Request Quote](#)

S1200AX

In order to reduce the WISP maintenance cost, we integrate 8kV Ethernet lightning protection module into the S1200AX. This feature along with high ...

[Request Quote](#)



Outdoor wireless , ANDREW

The ANDREW 360-degree wind load-reducing design solves the critical challenge of wind load management for mobile network operators deploying larger and more numerous base station ...

[Request Quote](#)

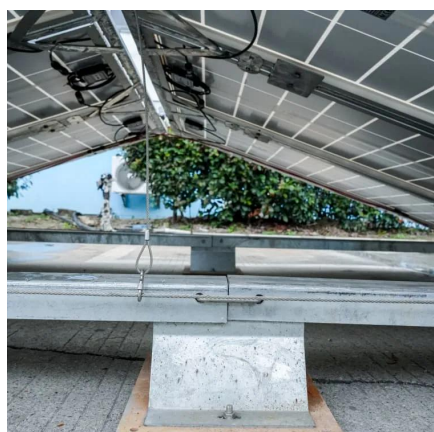
E-link 802.11AC 1200Mbps High



Power Outdoor IP67 WiFi Base Station

HWAP80 outdoor high-power base station AP can cover a wide area of 600 meters, can easily meet the wide coverage requirements of outdoor WIFI projects, and ...

[Request Quote](#)



[Long Range Wireless Base Station Kit](#)

Long Range Wireless Base Station Kit connects devices up to 2+ miles. Weather-resistant, multiple compliance, and versatile mounting for outdoor deployments.

[Request Quote](#)

S1200AX

In order to reduce the WISP maintenance cost, we integrate 8kV Ethernet lightning protection module into the S1200AX. This feature along with high durable temperature range and IP65 ...

[Request Quote](#)





Contact Us

For catalog requests, pricing, or partnerships, please visit:

<https://energyinnovationday.pl>

Phone: +48 22 335 1273

Email: info@energyinnovationday.pl

Scan the QR code to contact us via WhatsApp.

