



Mobile Base Station Power Module Installation





Overview

Here's a step-by-step guide to the process: 1. Site Acquisition and Survey
Objective: Select and acquire a suitable location for the BTS. Activities: Identify coverage gaps or expansion areas. Conduct a site survey to evaluate terrain, accessibility, and power availability.

Here's a step-by-step guide to the process: 1. Site Acquisition and Survey
Objective: Select and acquire a suitable location for the BTS. Activities: Identify coverage gaps or expansion areas. Conduct a site survey to evaluate terrain, accessibility, and power availability.

Often referred to as the brain center, this includes: Baseband Unit (BBU): Handles baseband signal processing. Remote Radio Unit (RRU): Converts signals to radio frequencies for transmission. Active Antenna Unit (AAU): Integrates RRU and antenna for 5G-era efficiency. 2. Power Supply System This.

Installing a Base Transceiver Station (BTS) is a critical step in building mobile communication networks. Here's a step-by-step guide to the process: 1. Site Acquisition and Survey
Objective: Select and acquire a suitable location for the BTS. Activities: Identify coverage gaps or expansion areas.

At NextG Power, we're tackling this challenge with our Reliable & Scalable Power for Next-Generation 5G Networks solution, featuring IP65 waterproof power modules (2000W or 3000W) and 5G LFP battery modules (IP65, 48V, 20Ah or 50Ah, parallel connection supported). Let's dive into the 5G micro base.

Abstract: With the rapid development of mobile communication service, the construction of mobile communication base station presents the trend of rapid development, the distribution of base station is more and more wide, more and more new requirements are put forward for the maintenance management.

Communication Base Station Controllers. Product Overview: HGM6120T Genset Controller is a power generation control module developed for mobile communication base station and the functions of the controller are set according to the actual situation of the mobile base station. The controller is.

ctors on the back of the base station. T e of sight, with a maximum mounting



holes underneath the device. The g he adapter into a 230V wall so



Mobile Base Station Power Module Installation



[Complete Guide to 5G Base Station Construction](#)

Explore how 5G base stations are built--from site planning and cabinet installation to power systems and cooling solutions. Learn the ...

[Request Quote](#)

Base Stations

Power Supply: The power source provides the electrical energy to base station elements. It often features auxiliary power supply ...

[Request Quote](#)



[Gateway and Base Station Installation Guide](#)

The three wires (white, black, and green) are attached to the power unit and ground (must be connected to earth ground). Seal the knockout to prevent water or moisture from entering the ...

[Request Quote](#)



Base Stations

Power Supply: The power source provides the electrical energy to base station elements. It often features auxiliary power supply mechanisms that guarantee operation in ...

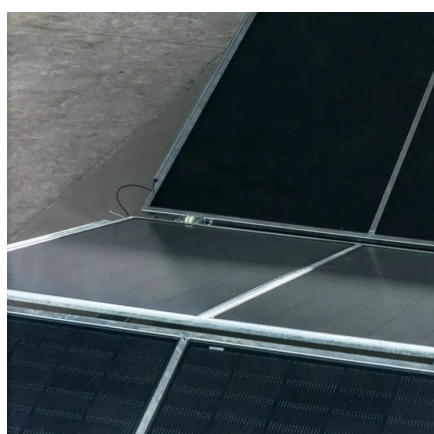
[Request Quote](#)



5G Base Station Power Supply System: NextG Power's Cutting ...

At NextG Power, we've poured our expertise into creating the Reliable & Scalable Power for Next-Generation 5G Networks solution, designed specifically for 5G micro base stations.

[Request Quote](#)



[Process of Installing a Base Transceiver Station \(BTS\)](#)

Installing a Base Transceiver Station (BTS) is a critical step in building mobile communication networks. Here's a step-by-step guide to the process:

[Request Quote](#)



[Process of Installing a Base Transceiver Station ...](#)

Installing a Base Transceiver Station (BTS) is a critical step in building mobile communication networks. Here's a step-by-step guide to ...

[Request Quote](#)



DC20161020.doc



Abstract: With the rapid development of mobile communication service, the construction of mobile communication base station presents the trend of rapid development, the distribution of base

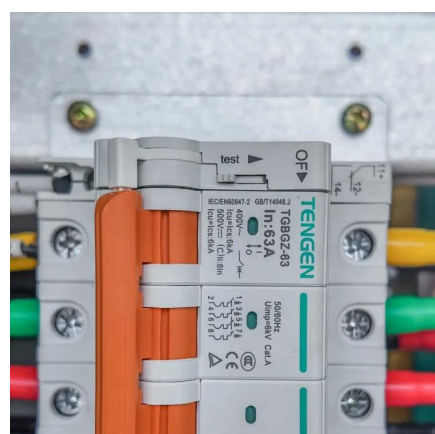
[Request Quote](#)



SmartGen HGM6120T Genset Controller. Communication Base Station

Modular design, flame-retardant ABS shell, embedded mounting, compact structure and easy installation. SmartGen HGM6120T Genset Controller. Communication Base Station Controllers.

[Request Quote](#)



[SmartGen HGM6120T Genset Controller.](#)

Modular design, flame-retardant ABS shell, embedded mounting, compact structure and easy installation. SmartGen HGM6120T Genset Controller. ...

[Request Quote](#)



[IoT Wireless Modules , Connectivity Modules](#)

Fast Deployment: The high accuracy and real-time capabilities of RTK modules significantly expedite the base station installation process. This reduction in installation time ...

[Request Quote](#)





Complete Guide to 5G Base Station Construction , Key Steps, ...

Explore how 5G base stations are built--from site planning and cabinet installation to power systems and cooling solutions. Learn the essential components, technologies, and ...

[Request Quote](#)



[Base station Installation Instructions](#)

Installation Instructions To ensure optimal performance and connectivity of your base station, follow these setup instructions.

[Request Quote](#)

[Base Station \(Gen 3\) Overview and Installation Guide](#)

Before installing your Base Station, you'll want to download the SimpliSafe® Mobile App on your phone or tablet. If you haven't already done so, you'll also need to create a SimpliSafe® Account.

[Request Quote](#)





Contact Us

For catalog requests, pricing, or partnerships, please visit:

<https://energyinnovationday.pl>

Phone: +48 22 335 1273

Email: info@energyinnovationday.pl

Scan the QR code to contact us via WhatsApp.

