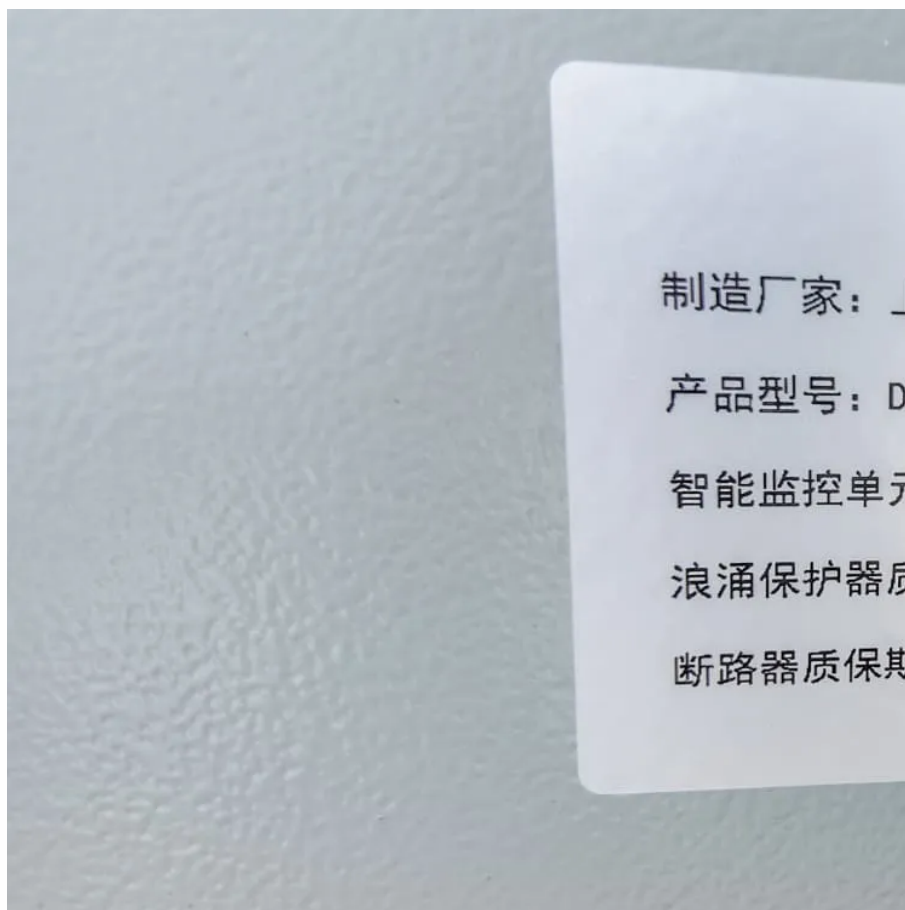




Mali solar container liquid cooling enterprise





Mali solar container liquid cooling enterprise



All About Mali

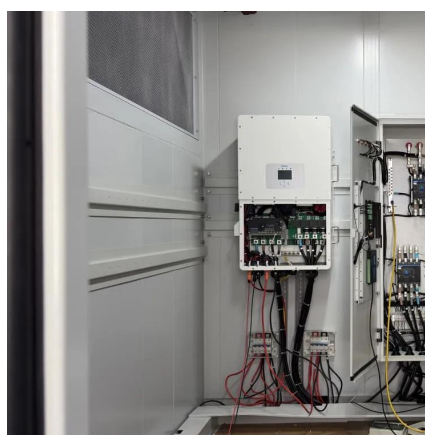
Mali, a landlocked country in Western Africa, shares a border with Niger on the east, Burkina Faso and the Côte d'Ivoire on the south, Guinea to the south-west, Senegal and ...

[Request Quote](#)

Mali

Mali is a landlocked country in the interior of Western Africa. More than half of it lies in the Sahara, the largest hot desert in the world. The central parts of Mali are in the Sahel, a transition zone ...

[Request Quote](#)



Mali

Mali, officially the Republic of Mali, is a landlocked country in West Africa. It is the eighth-largest country in Africa and the 23rd largest country in the wo

[Request Quote](#)

ml

Present-day Mali is named for the Mali Empire that at its peak in the 14th century covered an area about twice the size of modern-day France and stretched to the west coast of Africa.

[Request Quote](#)



[Mali , Culture, History, Maps, & People , Britannica](#)

Geographical and historical treatment of Mali, a landlocked country of western Africa, mostly in the Saharan and Sahelian regions, including maps and a survey of its people, ...

[Request Quote](#)

Mali , Culture, Facts & Travel ,

Mali is a developing country in western Africa which remains politically unstable following the coup d'etat in March 2012 and the ongoing conflict in northern Mali.

[Request Quote](#)



Mali, Burkina Faso and Niger call for joint 'large-scale operations

The head of an alliance of Mali, Burkina Faso and Niger says the launch of a joint battalion "must be followed by large-scale operations in the coming days."

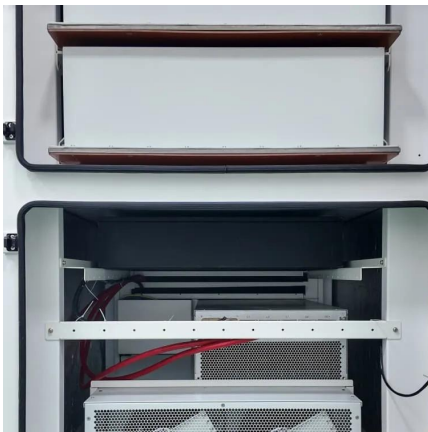
[Request Quote](#)

Mali



Mali, [c] officially the Republic of Mali, [d] is a landlocked country in West Africa. It is the eighth-largest country in Africa and the 23rd largest country in the world, with an area of over ...

[Request Quote](#)



Republic of Mali

The sovereign state of Mali consists of eight regions and its borders on the north reach deep into the middle of the Sahara Desert, while the country's southern part, where the ...

[Request Quote](#)



Contact Us

For catalog requests, pricing, or partnerships, please visit:

<https://energyinnovationday.pl>

Phone: +48 22 335 1273

Email: info@energyinnovationday.pl

Scan the QR code to contact us via WhatsApp.

