



# Is it safe to install wind power in base stations





## Overview

---

Fortunately, wind turbines have an excellent record of safety, and a significant body of research indicates that there is no direct relationship between human exposure to wind turbines and human health issues.

Fortunately, wind turbines have an excellent record of safety, and a significant body of research indicates that there is no direct relationship between human exposure to wind turbines and human health issues.

This report is available at no cost from the National Renewable Energy Laboratory (NREL) at This report is available at no cost from the National Renewable Energy Laboratory (NREL) at This report was prepared as an account of work sponsored by.

Get ready to navigate the crucial regulations and permits for installing wind turbines—discover what you need to ensure compliance and success. When installing a wind turbine, you must secure local permits, such as a conditional use permit, that align with zoning regulations, property setbacks, and.

Although wind energy projects are commonly praised for producing green power, they rarely receive preferential permitting treatment. Wind energy projects raise local land use, environmental, and community concerns similar to those raised by other commercial and industrial projects. Concerted.

Installing a wind turbine on your property often requires planning permission, and the specific rules and regulations can vary greatly depending on your location. In the following sections, we'll delve into planning permission requirements in the United Kingdom, the United States of America, and.

The question of “Is it easy to install a wind turbine” is one that many people ask when considering renewable energy solutions. Wind turbines are an essential part of the global shift toward sustainable energy, yet their installation involves a combination of precise planning, technical expertise.

These projects present an opportunity for distributed, low-carbon generation combined with highly visible statements on sustainability, but the BEWT niche of the wind industry is still developing and is relatively less mature than the utility-



scale wind or conventional ground-based distributed wind.



## Is it safe to install wind power in base stations



### [Deployment of Wind Turbines in the Built Environment: ...](#)

Understanding the expected production of a wind turbine in the built environment is a very complex undertaking; the use of onsite resource measurements combined with high-fidelity ...

[Request Quote](#)

### **Important Regulations and Permits for Installing a Wind Turbine**

To guarantee your wind turbine installation complies with federal regulations, you must navigate the FAA's requirements meticulously. Specifically, if your structure exceeds 200 ...

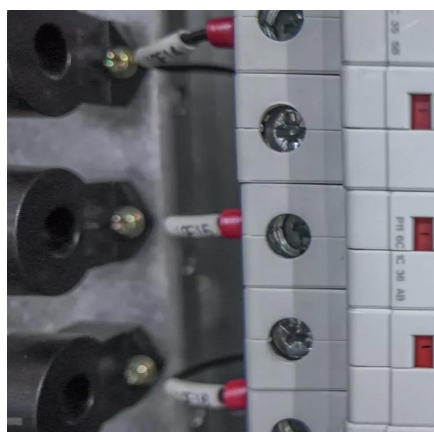
[Request Quote](#)



### **Deployment of Wind Turbines in the Built Environment: Risks ...**

Based on several key factors (i.e., wind speeds are typically lower and costs for implementing projects are typically higher), projects in the built environment can be difficult to justify on a ...

[Request Quote](#)



### **Is it Easy to Install a Wind Turbine? The 6 Stages of Installation**

Is it Easy to Install a Wind Turbine? So, is it easy to install a wind turbine? The answer depends on the expertise and resources available. While the process involves many ...



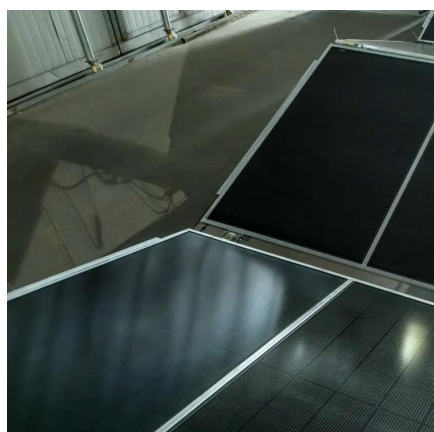
[Request Quote](#)



### [Wind Turbine Installation Risks for Construction ...](#)

But despite all their pluses, wind turbines aren't without fault. Wind turbine installation risks pose a major threat to construction workers ...

[Request Quote](#)



### [National Wind Watch , The Grid and Industrial Wind Power](#)

Base load is typically provided by large coal-fired and nuclear power stations. They may take days to fire up, and their output does not vary.

[Request Quote](#)



### **Siting and Permitting Wind Projects**

Although wind energy projects are commonly praised for producing green power, they rarely receive preferential permitting treatment. Wind energy ...

[Request Quote](#)



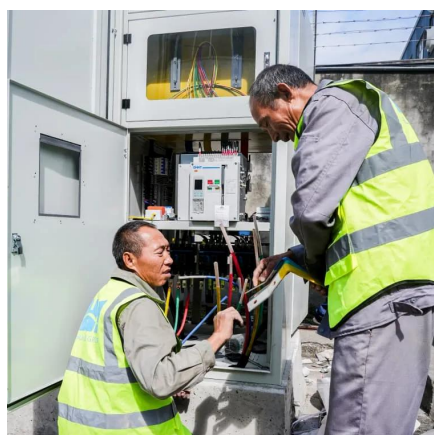
### [WINDEXchange: Wind Energy Projects and](#)



## Safety

Fortunately, wind turbines have an excellent record of safety, and a significant body of research indicates that there is no direct relationship between human exposure to wind turbines and ...

[Request Quote](#)



## Installation of Wind Turbines: Setting Up a Wind Farm

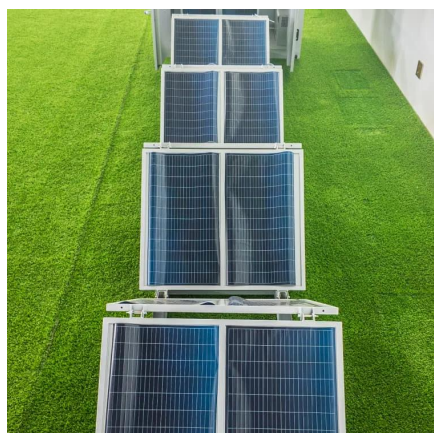
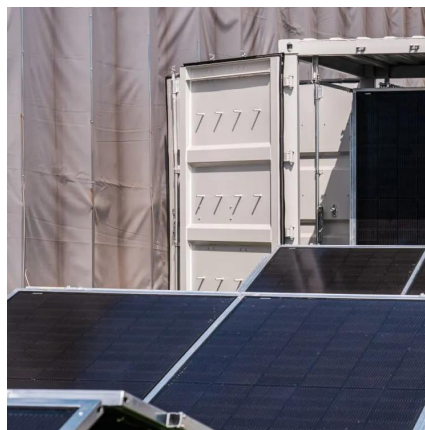
Clients often ask me about how much it costs to install a wind turbine and what goes into planning permission. ...

[Request Quote](#)

## Installation of Wind Turbines: Setting Up a Wind Farm

Clients often ask me about how much it costs to install a wind turbine and what goes into planning permission. If you're curious, I've rounded up a few frequently asked ...

[Request Quote](#)



## Is it Easy to Install a Wind Turbine? The 6 Stages ...

Is it Easy to Install a Wind Turbine? So, is it easy to install a wind turbine? The answer depends on the expertise and resources ...

[Request Quote](#)

## National Wind Watch , The Grid and



## [Industrial Wind Power](#)

Installing a wind turbine on your property often requires planning permission, and the specific rules and regulations can vary greatly depending on your location.

[Request Quote](#)



## [Wind Turbine Installation Regulations: A Guide to Planning](#)

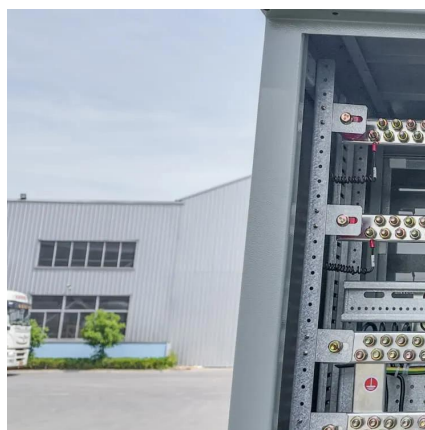
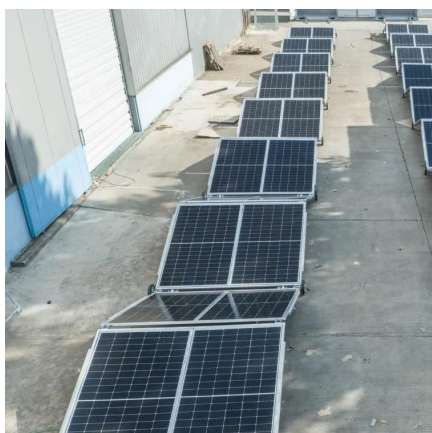
Installing a wind turbine on your property often requires planning permission, and the specific rules and regulations can vary greatly depending on your location.

[Request Quote](#)

## **Siting and Permitting Wind Projects**

Although wind energy projects are commonly praised for producing green power, they rarely receive preferential permitting treatment. Wind energy projects raise local land use, ...

[Request Quote](#)



## [Important Regulations and Permits for Installing a ...](#)

To guarantee your wind turbine installation complies with federal regulations, you must navigate the FAA's requirements ...

[Request Quote](#)

## [Wind Turbine Installation Risks for](#)



## Construction Workers

But despite all their pluses, wind turbines aren't without fault. Wind turbine installation risks pose a major threat to construction workers who erect them. These are large, ...

[Request Quote](#)



## WINDEXchange: Wind Energy Projects and Safety

Fortunately, wind turbines have an excellent record of safety, and a significant body of research indicates that there is no direct relationship ...

[Request Quote](#)



## Contact Us

---

For catalog requests, pricing, or partnerships, please visit:

<https://energyinnovationday.pl>

Phone: +48 22 335 1273

Email: [info@energyinnovationday.pl](mailto:info@energyinnovationday.pl)

Scan the QR code to contact us via WhatsApp.

