



# Inverter voltage automatic selection





## Overview

---

Auto-Inverter Selection is an intelligent solar design feature that automatically chooses the optimal inverter for a PV system based on factors such as system size, module count, voltage limits, DC/AC ratio, shading conditions, grid requirements, and project type.

Auto-Inverter Selection is an intelligent solar design feature that automatically chooses the optimal inverter for a PV system based on factors such as system size, module count, voltage limits, DC/AC ratio, shading conditions, grid requirements, and project type.

Auto-Inverter Selection is an intelligent solar design feature that automatically chooses the optimal inverter for a PV system based on factors such as system size, module count, voltage limits, DC/AC ratio, shading conditions, grid requirements, and project type. This automation removes the.

This project is about automatic power source selection circuit diagram using Arduino. I have already posted a article on automatic transfer switch using pic microcontroller. The basic objective of this project is to select power supply form two different sources. Two power sources like main grid.

This project implements a smart power selector using Proteus and Arduino IDE to prioritize power sources like solar, grid (WAPDA), and generators, ensuring efficient energy management. The Smart Power Selector is designed to automatically switch between different power sources to maintain.

Last Updated on January 19, 2025 by Swagatam 158 Comments I have been put forth with this question many times in this blog, how do we add a changeover selector switch for automatically toggling of an inverter when AC mains is present and vice versa. And also the system must enable automatic.

The report, Regulating Voltage: Recommendations for Smart Inverters, provides an introduction to voltage regulation concepts. This report from GridLab provides an introduction to voltage regulation concepts, including advantages and disadvantages of various control modes. The authors include.

LED DISPLAY MONITORING: 5-digit LED display shows voltage and current status in



real time. Clear and accurate—monitoring only, no feedback function EASY DIN<sup>®</sup>  
RAIL INSTALLATION: Compact design mounts quickly on standard DIN rails. Ideal  
for tight spaces and simplifies installation Brief content.



## Inverter voltage automatic selection



### [Automatic Voltage Regulation Inverter Generators ...](#)

Find Automatic Voltage Regulation inverter generators at Lowe's today. Shop inverter generators and a variety of electrical products online at Lowes .

[Request Quote](#)

### [Inverters and Optimizers in Sales Mode](#)

Automatic inverter selection in Sales Mode allows a Sales Mode user to seamlessly add a compatible inverter to a design. Compatible inverters and optimizers (if applicable) are added ...

[Request Quote](#)



### **Automatic Transfer Switch 63A 110V, Automatic/Manual Transfer ...**

**AUTOMATIC OR MANUAL SWITCHING:**  
Automatically transfers between three power sources (e.g., Utility, Generator, Solar) during power loss or voltage issues; Manual ...

[Request Quote](#)



### [Automatic Voltage Regulation Inverter Generators at Lowes](#)

Find Automatic Voltage Regulation inverter generators at Lowe's today. Shop inverter generators and a variety of electrical products online at Lowes .



[Request Quote](#)



### **Auto Inverter Selection -- How Automation Optimizes Solar ...**

Auto-Inverter Selection is an intelligent solar design feature that automatically chooses the optimal inverter for a PV system based on factors such as system size, module count, voltage limits, ...

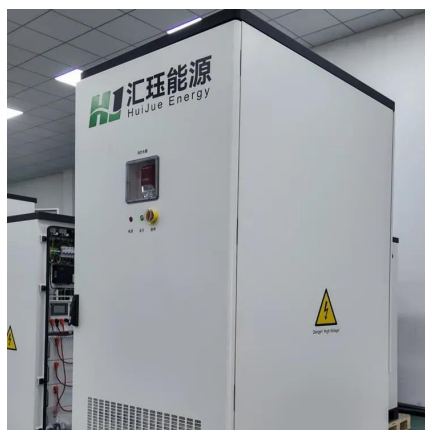
[Request Quote](#)



### **Regulating Voltage: Recommendations for Smart Inverters**

The paper highlights recommendations for enabling the voltage regulation capabilities specified in Institute of Electrical and Electronics Engineers Standard 1547-2018. ...

[Request Quote](#)



### **2 Easy Automatic Inverter/Mains AC Changeover Circuits**

I have been put forth with this question many times in this blog, how do we add a changeover selector switch for automatically toggling of an inverter when AC mains is present ...

[Request Quote](#)



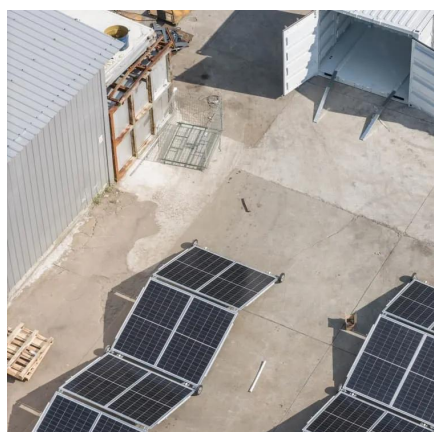
### **Smart Power Selector in Proteus and**



## [Arduino IDE](#)

The Smart Power Selector is designed to automatically switch between different power sources to maintain uninterrupted power supply. It monitors voltage and current readings and displays ...

[Request Quote](#)



## **Automatic voltage regulation application for PV inverters in low**

The proposed method not only improves the voltage quality in the grid but also manages the reactive power outputs of PV inverters efficiently. A digital twin of the cyber ...

[Request Quote](#)

## **Selection of Smart Inverter Voltage Regulation Functions for Over**

Hence, using any specific voltage regulation function poses a challenge to achieving effective voltage regulation. Therefore, this paper proposes a novel approach based on the analytical ...

[Request Quote](#)



## [Automatic power source selector circuit using Arduino](#)

In this automatic power source selection project we have used Arduino to switch between two power sources. Arduino is used to measure ac voltage of main grid and output of solar inverter.

[Request Quote](#)

## [Automatic power source selector circuit](#)



## [using Arduino](#)

Block Diagram of Automatic Power Source Selection  
Automatic Power Source Selector Working  
Circuit Diagram of Automatic Power Source Selector  
Circuit diagram of automatic power source selector is given below. I have already explained you all the components and working of this project. So rest of circuit diagram is simple and you can easily understand it. Here LCD is interfaced with Arduino. It is used to display voltage of both solar and main grid. See more on [microcontrollerslab](#)



## Videos of Inverter Voltage Automatic Selection

Watch video 2:53 inverter wiring diagram using automatic changeover switch Jr Electric School 7K views Apr 18, 2024  
Watch video 0:11 Inverter and Battery Selection - Calculations for Home UPS Electrical Engineering XYZ 61.1K views 9 months ago  
Watch video 34:22 The Secret Behind Electric Motors: Inverter Explained Munro Live 68.7K views 6 months ago  
Watch full video Github

## Smart Power Selector in Proteus and Arduino IDE - GitHub

The Smart Power Selector is designed to automatically switch between different power sources to maintain uninterrupted power supply. It monitors voltage and current readings and displays ...

[Request Quote](#)



## Contact Us

---

For catalog requests, pricing, or partnerships, please visit:

<https://energyinnovationday.pl>

Phone: +48 22 335 1273

Email: [info@energyinnovationday.pl](mailto:info@energyinnovationday.pl)

Scan the QR code to contact us via WhatsApp.

