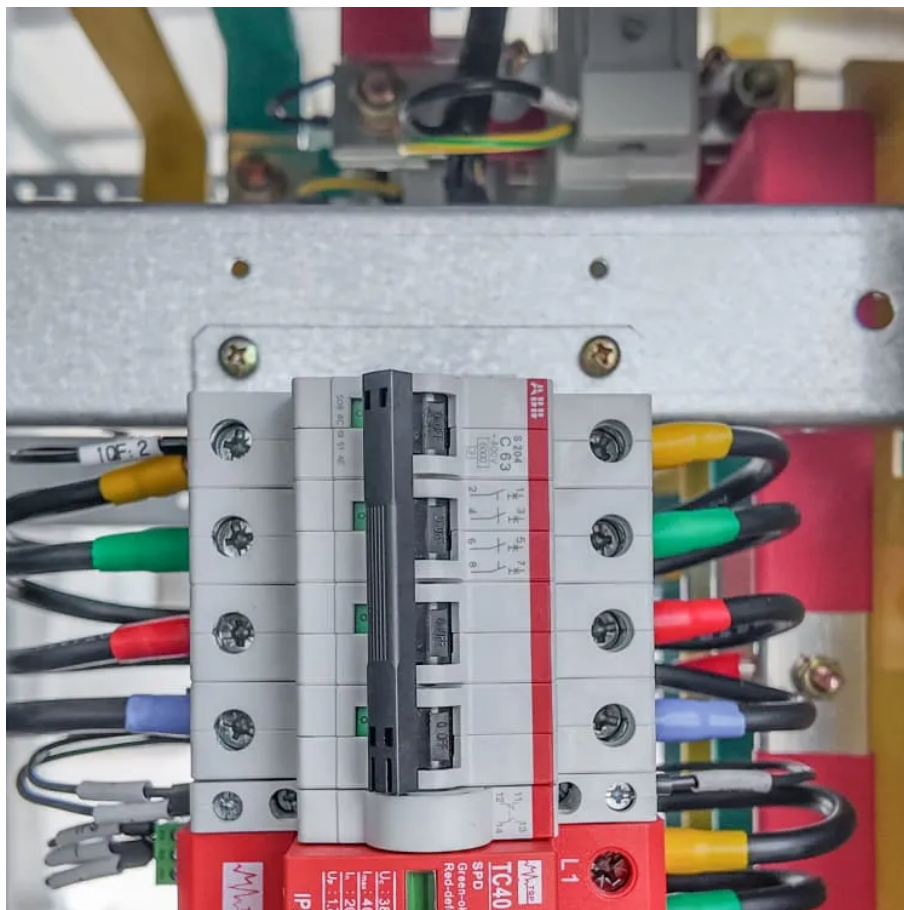




Inverter delivery power ratio





Overview

DC/AC ratio, also called inverter loading ratio (ILR), is the array's STC power divided by the inverter's AC nameplate power. $ILR = P_{DC, STC} / P_{AC, rated}$. A higher ILR feeds more energy during long shoulder hours and in winter, at the cost of some midday clipping on clear .

DC/AC ratio, also called inverter loading ratio (ILR), is the array's STC power divided by the inverter's AC nameplate power. $ILR = P_{DC, STC} / P_{AC, rated}$. A higher ILR feeds more energy during long shoulder hours and in winter, at the cost of some midday clipping on clear .

DC/AC ratio and inverter loading shape real solar yield more than most design choices. Set them well and you gain energy all year, keep the inverter in its high-efficiency zone, and leave headroom for grid support and batteries. This piece focuses on practical math, climate effects, and sizing.

Since inverters convert DC power to AC power the output of the inverter is measured in either power (kW AC) or current (amps) and voltage (typically 240v AC). For example, the Tesla string inverter has a power output of 7.6 kW AC or 31.6 amps at 240v AC. An Enphase IQ-8+ microinverter has a power.

Converting energy from DC to AC allows you to deliver it to the grid or use it to power buildings, both of which operate with AC electricity. When designing a solar installation, and selecting the inverter, we must consider how much DC power will be produced by the solar array and how much AC power.

The DC/AC ratio is the size relationship between the total DC power of your solar panels and the AC power rating of your inverter. In other words, it shows how much solar panel capacity is installed compared to the inverter capacity. $12 \text{ kW (DC)} \div 10 \text{ kW (AC)} = 1.2 \text{ DC/AC ratio}$ This ratio helps.

The only power generating component of the system is the PV array (the modules, also known as the DC power). For example a 9 kW DC PV array is rated to have the capacity to produce 9 kW of power at standard testing conditions (STC). STC is $1,000 \text{ W/m}^2$ and 25°C , and is more ideal than typical real.

The Inverter Loading Ratio (ILR) —also known as the DC/AC Ratio —is the ratio



between the total DC capacity of a solar PV array and the AC capacity of the inverter. ILR is one of the most important design parameters in solar engineering because it determines how efficiently the system operates.



Inverter delivery power ratio



[Everything You Need to Know About Inverter Sizing](#)

In this article, we'll go into the basics of what an inverter is, the types of inverters, inverter power outputs, and how the DC-to-AC size ratio is vital in making a solar system run ...

[Request Quote](#)

The Effect of Inverter Loading Ratio on Energy Estimate Bias

In this work we take an alternative approach using real system power measurements to show that energy predictions from typical industry models suffer from a bias that increases with inverter ...

[Request Quote](#)



[Inverter Sizing-Determining The Perfect DC:AC Ratio!](#)

According to NREL's 2022 Report, the average cost for one watt of DC capacity for residential PV systems is ...

[Request Quote](#)

Understanding Inverter Sizing and DC/AC Ratio in Solar PV ...

To design an efficient solar PV system, understanding inverter sizing and the DC/AC ratio is critical. These factors directly affect energy yield, system efficiency, and ...



[Request Quote](#)



[Solar inverter sizing: Choose the right size inverter](#)

To design an efficient solar PV system, understanding inverter sizing and the DC/AC ratio is critical. These factors directly affect energy yield, system efficiency, and ...

[Request Quote](#)



[Everything You Need to Know About Inverter ...](#)

In this article, we'll go into the basics of what an inverter is, the types of inverters, inverter power outputs, and how the DC-to-AC size ...

[Request Quote](#)



[DC/AC Ratio Guide for Solar Systems: Best ...](#)

Understand the ideal DC/AC ratio for your solar system and discover how proper inverter sizing improves efficiency and energy output.

[Request Quote](#)



[The Ultimate Guide to DC/AC Ratio and](#)



[Inverter ...](#)

DC/AC ratio, also called inverter loading ratio (ILR), is the array's STC power divided by the inverter's AC nameplate power. $ILR = P_{DC, STC} / P_{AC}$...

[Request Quote](#)



Inverter Loading Ratio (ILR) -- Why Solar Designers Oversize ...

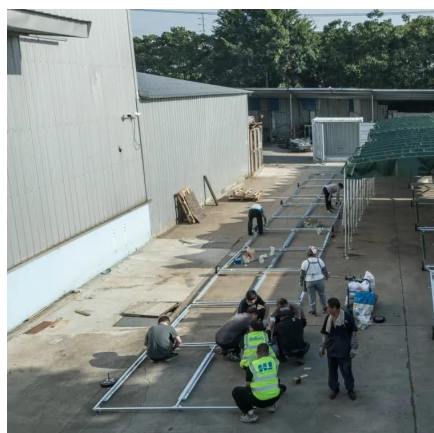
ILR is the ratio of DC array size to AC inverter capacity. Higher ILRs reduce cost per watt and increase annual production but may cause clipping.

[Request Quote](#)

[The Ultimate Guide to DC/AC Ratio and Inverter Loading](#)

DC/AC ratio, also called inverter loading ratio (ILR), is the array's STC power divided by the inverter's AC nameplate power. $ILR = P_{DC, STC} / P_{AC}$, rated. A higher ILR ...

[Request Quote](#)



[Solar inverter sizing: Choose the right size inverter](#)

The DC-to-AC ratio -- also known as Inverter Loading Ratio (ILR) -- is defined as the ratio of installed DC capacity to the inverter's AC power rating. It often makes sense to oversize a ...

[Request Quote](#)

DC/AC Ratio Guide for Solar Systems:



Best Inverter Sizing Tips

Understand the ideal DC/AC ratio for your solar system and discover how proper inverter sizing improves efficiency and energy output.

[Request Quote](#)



Inverter Loading Ratio: The Deep-Dive Guide You Wish You Had ...

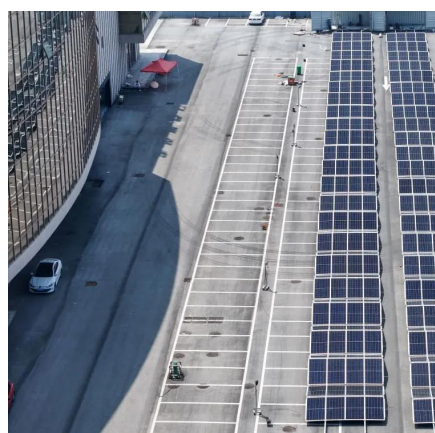
The inverter loading ratio is the relationship between the total DC power your solar panels can produce and the AC capacity of your solar inverter. It shows how well the two sides ...

[Request Quote](#)

Understanding DC/AC Ratio

Because the PV array rarely produces power to its STC capacity, it is common practice and often economically advantageous to size the inverter to be less than the PV array. This ratio of PV ...

[Request Quote](#)



[Inverter Sizing-Determining The Perfect DC:AC Ratio!](#)

According to NREL's 2022 Report, the average cost for one watt of DC capacity for residential PV systems is \$0.48 while the average cost of one watt of AC capacity is \$0.36. ...

[Request Quote](#)

Understanding DC/AC Ratio



Because the PV array rarely produces power to its STC capacity, it is common practice and often economically advantageous to size the ...

[Request Quote](#)





Contact Us

For catalog requests, pricing, or partnerships, please visit:

<https://energyinnovationday.pl>

Phone: +48 22 335 1273

Email: info@energyinnovationday.pl

Scan the QR code to contact us via WhatsApp.

