



Intelligent Folding Container Used at Kyiv Railway Station





Overview

Kyiv–Pasazhyrskyi is a railway station in , the capital of Ukraine. The station is a railway hub consisting of several railroad station buildings, along with its own repair facilities the Kyiv Electric Railcar Repair Shop, a with , and the railway sports complex, which is integrated into the cityscape. The station is part of the so-called Kyiv Southern Railway loop.

On Friday, Nov. 1, Kyiv’s Central Railway Station unveiled a new bronze miniature sculpture titled Return Home, dedicated to the theme of Ukrainians returning to their homeland. The sculpture depicts two trains arriving at the platform.

On Friday, Nov. 1, Kyiv’s Central Railway Station unveiled a new bronze miniature sculpture titled Return Home, dedicated to the theme of Ukrainians returning to their homeland. The sculpture depicts two trains arriving at the platform.

A large-scale interactive exhibition will soon open at the Central Railway Station in Kyiv, providing a true surprise for passengers and guests of the capital. From September 26 to November 9, a unique exhibition created by the Agency for the Promotion of Ukrainian Culture, Ukraine WOW, will take.

Kyiv–Pasazhyrskyi (Ukrainian: Київ-Пасажирський ['kɪjiɯ pɛsɛ'zɪrs'kɪj], lit. 'Kyiv-Passenger') is a railway station in Kyiv, the capital of Ukraine. The station is a railway hub consisting of several railroad station buildings, along with its own repair facilities the Kyiv Electric Railcar Repair.

On Friday, Nov. 1, Kyiv’s Central Railway Station unveiled a new bronze miniature sculpture titled Return Home, dedicated to the theme of Ukrainians returning to their homeland. The sculpture depicts two trains arriving at the platform. One train arrives from Kramatorsk, carrying returning.

The Zhen Hua ship set off from a dock in Nantong, China, carrying six cranes that will be used on the £300m Liverpool2 deep-water container terminal construction project. The scheme, being led by Peel Ports, aims to deepen the Mersey estuary so it can accommodate some of the biggest boats in the.

The transport and logistics group “Lemtrans” from Kyiv, in collaboration with Rail Trans Investment from Odesa, has completed the initial phase of a large-scale infrastructure project — the construction of the “Fastiv Container Terminal” in the Kyiv region. The total investment in this phase.



Kyiv-Pasazhyrskyyi is the main passenger railway station of Kyiv. It belongs to the Central Railway, which has been operating since the 1860s. It consists of the old Central, new Southern and Suburban railway stations. The "Vokzalna" metro station is located in the immediate vicinity of the Suburban. What does Kyiv passenger mean?

'Kyiv-Passenger') is a railway station in Kyiv, the capital of Ukraine. The station is a railway hub consisting of several railroad station buildings, along with its own repair facilities the Kyiv Electric Railcar Repair Shop, a railway depot with railyard, and the railway sports complex, which is integrated into the cityscape.

Where are the train stations located in Kyiv?

The Central and Southern (Pivdennyi) Station buildings are located on both sides of the tracks used by long-distance trains, connected with an overpass leading the station platform. They serve international trains, most Ukrzaliznytsia passenger trains, some suburban trains, and the Kyiv Boryspil Express to the Boryspil International Airport.

What happened at Kyiv's central train station?

Lynsey Addario for The New York Times KYIV, Ukraine — The crowds of exhausted, frightened women and children at Kyiv's central train station on Friday suddenly surged in a near-stampede to a station platform where a train heading to safety in western Ukraine was rumored to be arriving soon. "Hurry! Hurry!" a mother shouted at her children.

What's happening in Kyiv?

Kyiv, a city of 2.8 million before the war, is slowly being encircled by Russian troops and armor. Most of the fighting so far has been in towns outside the city, where a miles-long column of Russian armored and military vehicles remains stalled to the northwest.



Intelligent Folding Container Used at Kyiv Railway Station



[Cargo container set in a frame of rotating machine for](#)

Download this stock image: Cargo container set in a frame of rotating machine for repairing. Maintenance hall for repairing containers, railway station facilities.

[Request Quote](#)

[New Bronze Miniature "Return Home" Unveiled at ...](#)

On Friday, Nov. 1, Kyiv's Central Railway Station unveiled a new bronze miniature sculpture titled Return Home, dedicated to the theme of ...

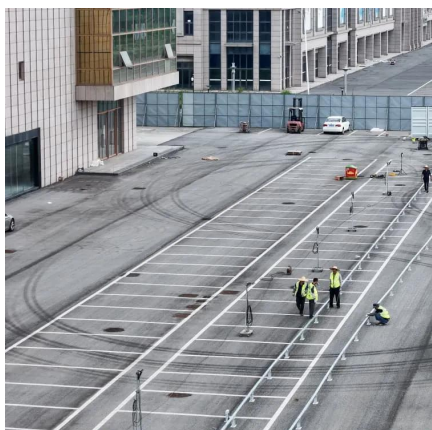
[Request Quote](#)



Lemtrans and Rail Trans Investment Launch Container Terminal ...

As part of the project, two new railway tracks and a container yard capable of storing up to 1,350 twenty-foot equivalent units (TEU) have been fully equipped. According to ...

[Request Quote](#)



[Kiev-Passazhirskiy Railway Station \(2026\)](#)

A typical yet classical train station, Kiev-Passazhirskiy is one of the main routes and lines which operate from the main train station city centre ...

[Request Quote](#)



[Railway station, Kyiv: information, photos, reviews](#)

The station was designed for 72 pairs of trains and 40 thousand passengers per day. The main volume has an overall symmetrical composition, in the center of which is a departure lobby ...

[Request Quote](#)



Kyiv-Pasazhyrskyi railway station

Serving more than 170,000 passengers per day (as of 2005), the complex contains several buildings. The Central and Southern (Pivdennyi) Station buildings are located on both sides of ...

[Request Quote](#)



A train to the war

When the train returns from Kramatorsk to Kyiv late at night, it is welcomed by the song "Voyny Svitla" ("The warriors of light"). This song was written by the Belarusian rock band ...

[Request Quote](#)



Kyiv-Pasazhyrskyi railway station



OverviewHistory and architectureName disambiguationDevelopment plansExternal links

Kyiv-Pasazhyrskyi is a railway station in Kyiv, the capital of Ukraine. The station is a railway hub consisting of several railroad station buildings, along with its own repair facilities the Kyiv Electric Railcar Repair Shop, a railway depot with railyard, and the railway sports complex, which is integrated into the cityscape. The station is part of the so-called Kyiv Southern Railway loop.

[Request Quote](#)



A train to the war

When the train returns from Kramatorsk to Kyiv late at night, it is welcomed by the song "Voiny Svitla" ("The warriors of light"). This song ...

[Request Quote](#)

[In Kyiv's Railway Station, Rumors, Near ...](#)

As rumors flew of the arrival of a train headed from Kyiv to western Ukraine, hundreds of people scrambled across the tracks, hoping ...

[Request Quote](#)



Interactive exhibition of iconic items opens at Kyiv central station

Interactive technologies will allow museum guests to take a virtual flight over Syvash and the Carpathians, find themselves in a pink train car, attend a rehearsal of a ...

[Request Quote](#)

[Kiev-Passazhirskiy Railway Station \(2026\)](#)



A typical yet classical train station, Kiev-Passazhirskiy is one of the main routes and lines which operate from the main train station city centre area. There are many ticket window booths and ...

[Request Quote](#)



[The largest private railway freight operator in ...](#)

Last year, Lemtrans transported 15.9 million tons of cargo and aims to establish a container terminal in Fastiv (Kyiv region) that will ...

[Request Quote](#)



In Kyiv's Railway Station, Rumors, Near-Stampedes and Frustration

As rumors flew of the arrival of a train headed from Kyiv to western Ukraine, hundreds of people scrambled across the tracks, hoping to get to the platform first.

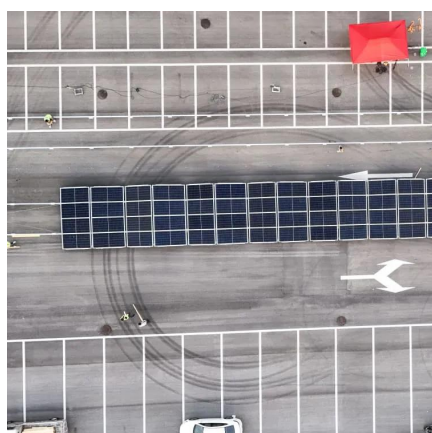
[Request Quote](#)



[Cargo container set in a frame of rotating machine ...](#)

Download this stock image: Cargo container set in a frame of rotating machine for repairing. Maintenance hall for repairing containers, railway ...

[Request Quote](#)



Lemtrans and Rail Trans Investment



Launch Container Terminal in Kyiv

As part of the project, two new railway tracks and a container yard capable of storing up to 1,350 twenty-foot equivalent units (TEU) have been fully equipped. According to ...

[Request Quote](#)



New Bronze Miniature "Return Home" Unveiled at Kyiv Central Railway

On Friday, Nov. 1, Kyiv's Central Railway Station unveiled a new bronze miniature sculpture titled Return Home, dedicated to the theme of Ukrainians returning to their homeland.

[Request Quote](#)

The largest private railway freight operator in Ukraine plans to ...

Last year, Lemtrans transported 15.9 million tons of cargo and aims to establish a container terminal in Fastiv (Kyiv region) that will serve as a strategic logistics hub for both the ...

[Request Quote](#)





Contact Us

For catalog requests, pricing, or partnerships, please visit:

<https://energyinnovationday.pl>

Phone: +48 22 335 1273

Email: info@energyinnovationday.pl

Scan the QR code to contact us via WhatsApp.

