



Installation order of battery cabinet and charging cabinet





Overview

This step-by-step guide outlines how to install and maintain a Storemasta battery charging and storage cabinet for optimum performance. 1. Select an appropriate location that is safe and convenient for staff to gain access to the cabinet. (*see our notes regarding.

This step-by-step guide outlines how to install and maintain a Storemasta battery charging and storage cabinet for optimum performance. 1. Select an appropriate location that is safe and convenient for staff to gain access to the cabinet. (*see our notes regarding.

This step-by-step guide outlines how to install and maintain a Storemasta battery charging and storage cabinet for optimum performance. 1. Select an appropriate location that is safe and convenient for staff to gain access to the cabinet. (*see our notes regarding underground premises). 2. Check.

On behalf of everyone at Eaton, we thank you for partnering with us, for trusting us to maintain your business continuity and for preventing downtime at your facility. Our suite of backup power, power distribution and power management products are designed to protect you from a host of threats.

charge in order to provide the necessary backup power to the load. It is the responsibility of the customer to make sure the batteries are not discharged below manufactures recommendations. After any battery discharge has occurred, the batteries should be recharged as soon as possible. Batteries.

This manual is designed for ease of use, giving the user easy and quick reference to information. This manual uses notice icons to draw attention to important information regarding the safe operation and installation of the battery cabinet. The notice icons used in this manual are explained below.

DC power cable connections. The M6 cable bolts should be torqued to 70 in-lbs. (8 Nm) and the M8 cable bolts should be torue to 150 in-lb oc - Op e cabinet and/or batteries. The installation must follow all applicable national or loca standards and regulations. Consult with the local Authority.

cts covered by this instruction manual are manufactured and/or sold by Vertiv. This



document is the property of Vertiv and contains confidential and proprietary information owned by Vertiv. Any copying, use or distribution of products are trademarks or registered trademarks of the respective companies. Any.



Installation order of battery cabinet and charging cabinet



[Powerware 9390 Integrated Battery Cabinet \(Models IBC-S ...](#)

AChapter 2, "Battery Cabinet Installation Plan and Unpacking" - explains how to prepare the site for the installation of the battery cabinet. It discusses equipment environmental requirements, ...

[Request Quote](#)



BC58 Battery Cabinet Installation, Operation, & Maintenance ...

Battery cabinets that are not supplied with an incorporated DC output disconnect device must have an appropriate disconnect device provided external to the cabinet.

USER MANUAL BATTERY CABINET

ETY 3.1 SAFETY INSTRUCTIONS Before beginning any work, carefully read all safety instructions, and always observe them when working on or with t. e cabinet and/or batteries. ...

[Request Quote](#)



INSTALLATION MANUAL

After selecting an install location on a wall, determine where to do the 1.5" max knockout based on wall space, how many Storz Wall Mount Battery Cabinets and Batteries are being installed, ...

[Request Quote](#)



[Request Quote](#)



[Eaton Samsung Gen 3 Battery Cabinet Installation and ...](#)

This manual describes how to install the Eaton Samsung Gen 3 battery cabinet and is divided into chapters. Read and understand the procedures described to ensure trouble-free installation ...

[Request Quote](#)

U-ENM00044

This manual uses notice icons to draw attention to important information regarding the safe operation and installation of the battery cabinet. The notice icons used in this manual are ...

[Request Quote](#)



[Installation Guide: Storemasta Lithium-Ion Battery Cabinet](#)

Installation Guide: Storemasta Lithium-Ion Battery Cabinet This step-by-step guide outlines how to install and maintain a Storemasta battery charging and storage cabinet for optimum performance.

[Request Quote](#)

Lithium battery charging cabinet



installation location requirements

The BATTERY line safety storage cabinets are specially designed for safe storage and charging of lithium-ion batteries. With its Type 90 classification and explosive burning of batteries in the ...

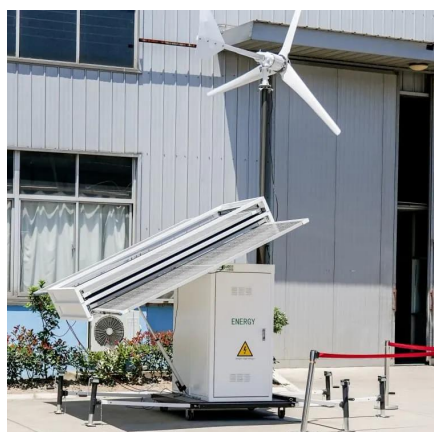
[Request Quote](#)



[-48 VDC Battery Cabinet Installation and User Manual ...](#)

Connect the power system's battery cable terminated in an Anderson connector to the first battery cabinet's battery cable terminated in a mating Anderson connector.

[Request Quote](#)



[INSTALLATION, OPERATION AND MAINTENANCE ...](#)

Prepare the surface on which the cabinet is to be placed. Assure the surface is clean, flat, and capable of supporting the weight of the cabinet battery system.

[Request Quote](#)





Contact Us

For catalog requests, pricing, or partnerships, please visit:

<https://energyinnovationday.pl>

Phone: +48 22 335 1273

Email: info@energyinnovationday.pl

Scan the QR code to contact us via WhatsApp.

