



Independent balance charging of tool batteries





Overview

Balancing can be active or passive. In active balancing, the balancer circuit enables transfer of charge between different cells of the battery, i.e., transferring energy from cells with a higher charge to cells with a lower charge. The term battery regulator typically refers only to devices that perform passive balancing. A full BMS might include active balancing as well as temperature m.

A Battery Management System (BMS) is designed to monitor and balance the voltage across individual cells in a battery pack. It automatically balances cells during the charging process, ensuring they all reach the same voltage.

A Battery Management System (BMS) is designed to monitor and balance the voltage across individual cells in a battery pack. It automatically balances cells during the charging process, ensuring they all reach the same voltage.

This article examines the concept of battery balancing, its significance, and methods for achieving effective battery balance. What Is Battery Balancing?

Battery balancing is the process of equalizing the charge across individual cells in a battery or individual batteries in battery groups to.

Does your Milwaukee M18 battery pack only have 3 bars when fully charged?

That's usually a sign that the cells are not balanced. All lithium-ion cells need to be at the same voltage or the battery pack can't fully charge. This cell rebalancing procedure will also work for DeWalt, Makita, or . more.

Battery balancing and battery redistribution refer to techniques that improve the available capacity of a battery pack with multiple cells (usually in series) and increase each cell's longevity. [1] A battery balancer or regulator is an electrical device in a battery pack that performs battery.

Battery balancing might sound technical, but it's a crucial process to ensure your batteries operate safely and last as long as possible. Whether you're working with solar systems, RV setups, electric vehicles, or DIY projects with more than one battery's system, understanding how to balance.

How to charge various types of power tool batteries?



Each battery type has unique charging requirements to maximize efficiency and lifespan. Here's how to charge them correctly: 1. Charging NiCd and NiMH Batteries Use a charger specifically designed for NiCd or NiMH chemistry. Avoid overcharging;

Most DeWalt batteries are lithium-ion, which have distinct characteristics compared to older nickel-cadmium or lead-acid batteries. Lithium-ion batteries operate by moving lithium ions from one electrode to another through an electrolyte. This unique chemistry allows for higher energy density.



Independent balance charging of tool batteries



[Battery Balancing: Techniques, Benefits, and How ...](#)

Learn how battery balancing improves performance, safety, and lifespan. Explore key techniques, benefits, and the science behind balancing ...

[Request Quote](#)

[Mastering Power Tool Batteries: Tips and Insights](#)

Charging your lithium-ion battery at regular intervals, such as when it reaches this level or before using it for an extended period, helps maintain its ...

[Request Quote](#)



[Battery Balancing: What, Why, and How - PowMr](#)

Battery imbalance refers to a condition where the battery voltage or state of charge (SoC) varies among the cells or groups within a ...

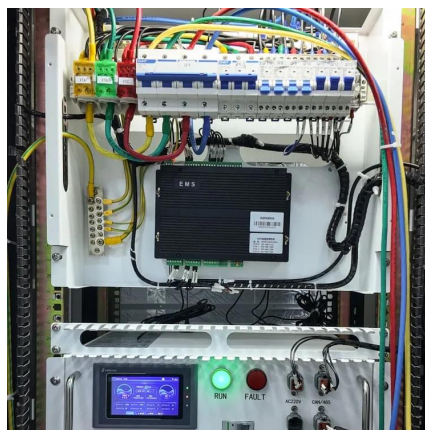
[Request Quote](#)

[Battery Balancing: What, Why, and How - PowMr](#)

Battery imbalance refers to a condition where the battery voltage or state of charge (SoC) varies among the cells or groups within a battery pack. Over time, imbalance creates ...



[Request Quote](#)



Techniques for Balancing Batteries- Improve Battery Life & Safety

In this article, we'll walk you through what battery balancing is, why it's important, common signs your batteries need balancing, and step-by-step methods to do it properly.

[Request Quote](#)



Balancing Power Tool Battery Packs

Does your Milwaukee M18 battery pack only have 3 bars when fully charged? That's usually a sign that the cells are not balanced. All lithium-ion cells need to be at the same voltage or the

[Request Quote](#)



best battery charger discharge balance for power tool nicad batteries

Unlike simpler chargers, this model supports a wide range of battery types, including Li-ion, LiPo, and NiMH, but what sets it apart is its dedicated balancing function for ...

[Request Quote](#)



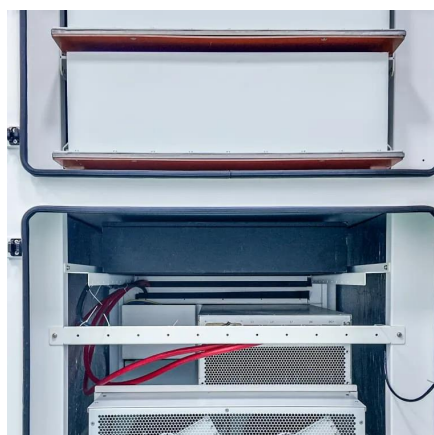
Power Tool Battery Charging: Do's, Don'ts



[& Pro Tips](#)

In this guide, we'll explore everything from battery types and charging methods to common mistakes and best practices. By the end, you'll know exactly how to charge your ...

[Request Quote](#)



Battery balancing

In active balancing, the balancer circuit enables transfer of charge between different cells of the battery, i.e., transferring energy from cells with a higher charge to cells with a lower charge. [4] ...

[Request Quote](#)

[Battery Balancing: Techniques, Benefits, and How It Works](#)

Learn how battery balancing improves performance, safety, and lifespan. Explore key techniques, benefits, and the science behind balancing battery cells effectively.

[Request Quote](#)



[Techniques for Balancing Batteries- Improve ...](#)

In this article, we'll walk you through what battery balancing is, why it's important, common signs your batteries need balancing, and step-by-step ...

[Request Quote](#)

Mastering Battery Life: How to



Balance Charge DeWalt Batteries

This not only maximizes the efficiency of your tools but also extends the lifespan of your batteries, saving you money in the long run. In this comprehensive guide, we will delve ...

[Request Quote](#)



Battery Cell Imbalance: What it Means (+How to Balance Batteries...

When an out-of-balance battery is charged or discharged, it delivers less than the nameplate capacity, leaving revenue on the table in every cycle. In addition, getting the battery ...

[Request Quote](#)

best battery charger discharge balance for power tool nicad ...

Unlike simpler chargers, this model supports a wide range of battery types, including Li-ion, LiPo, and NiMH, but what sets it apart is its dedicated balancing function for ...

[Request Quote](#)



[Mastering Power Tool Batteries: Tips and Insights](#)

Charging your lithium-ion battery at regular intervals, such as when it reaches this level or before using it for an extended period, helps maintain its overall health and prolong its lifespan. ...

[Request Quote](#)

[Power Tool Battery Charging: Do's, Don'ts](#)



& Pro Tips

In this guide, we'll explore everything from battery types and charging methods to common mistakes and best practices. By the end, ...

[Request Quote](#)



Battery balancing

Balancing can be active or passive. In active balancing, the balancer circuit enables transfer of charge between different cells of the battery, i.e., transferring energy from cells with a higher charge to cells with a lower charge. The term battery regulator typically refers only to devices that perform passive balancing. A full BMS might include active balancing as well as temperature m...

[Request Quote](#)

Balancing Power Tool Battery Packs

Does your Milwaukee M18 battery pack only have 3 bars when fully charged? That's usually a sign that the cells are not balanced. ...

[Request Quote](#)



Battery Cell Imbalance: What it Means (+How to ...

When an out-of-balance battery is charged or discharged, it delivers less than the nameplate capacity, leaving revenue on the table in ...

[Request Quote](#)



Contact Us

For catalog requests, pricing, or partnerships, please visit:

<https://energyinnovationday.pl>

Phone: +48 22 335 1273

Email: info@energyinnovationday.pl

Scan the QR code to contact us via WhatsApp.

