



# Huawei inverter 28kw parameters





## Overview

---

The typical working conditions are as follows: room temperature 25°C; rated input voltage 1080 V DC, rated output voltage 800 V AC/50 Hz; rated power, and grid voltage THDu  $\leq$  0.5%.

The typical working conditions are as follows: room temperature 25°C; rated input voltage 1080 V DC, rated output voltage 800 V AC/50 Hz; rated power, and grid voltage THDu  $\leq$  0.5%.

The typical noise value is the test result obtained under typical working conditions in a lab. To avoid complaints, do not install the inverter in a noise-sensitive area. The typical working conditions are as follows: room temperature 25°C; rated input voltage 1080 V DC, rated output voltage 800 V.

Page 2 Notice The purchased products, services and features are stipulated by the contract made between Huawei and the customer. All or part of the products, services and features described in this document may not be within the purchase scope or the usage scope. Unless otherwise specified in the.

Market Leadership with Proven Technology: Huawei maintains its position as the world's #1 solar inverter manufacturer for six consecutive years, commanding 29% of the global market through superior AI-powered optimization, 99% peak efficiency, and extensive R&D investment representing 54.1% of.

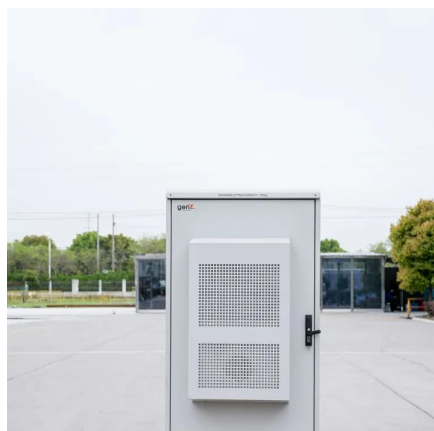
Max. DC input .

If this parameter is set to Enable, the inverter responds to the scheduling instruction from the remote port. If this parameter is set to Disable, the inverter does not respond to the scheduling instruction from the remote port. Specifies the time for maintaining the scheduling instruction. When.

Huawei's 2025 AI-driven models now integrate weather pattern analysis with real-time electricity pricing data, automatically optimizing feed-in timing. Here's the kicker - Huawei's string-level monitoring reduces commissioning time by 40% compared to 2023 models. But you've gotta watch these three.



## Huawei inverter 28kw parameters



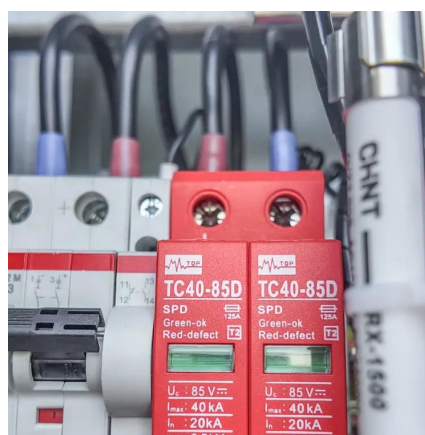
### **Sun2000 (8 ktl 28kti) user manual 07**

The document is the user manual for Huawei's SUN2000 string inverters, ranging from 8kW to 28kW. It provides instructions on installation, electrical connections, system operation, LCD ...

[Request Quote](#)

### **SUN2000**

The typical working conditions are as follows: room temperature 25°C; rated input voltage 1080 V DC, rated output voltage 800 V AC/50 Hz; rated power, and grid voltage THDu [Request Quote](#)



### [HUAWEI SUN2000 SERIES USER MANUAL Pdf ...](#)

Network Application The inverter applies to grid-tied PV systems for commercial rooftop PV plants and large PV plants. The SUN2000 can ...

[Request Quote](#)



### [HUAWEI SUN2000-28KTL USER MANUAL Pdf Download](#)

RS485 communications parameters such as the address, protocol, baud rate, and check mode can be set on the monitoring panel. Procedure The following table lists the procedure for ...



[Request Quote](#)



[HUAWEI SUN2000 SERIES USER MANUAL Pdf Download , ManualsLib](#)

Network Application The inverter applies to grid-tied PV systems for commercial rooftop PV plants and large PV plants. The SUN2000 can also apply to the AC power system with the neutral ...

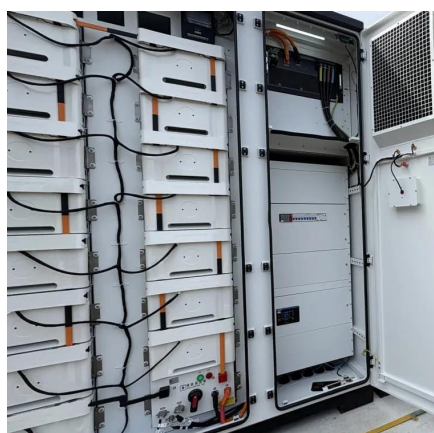
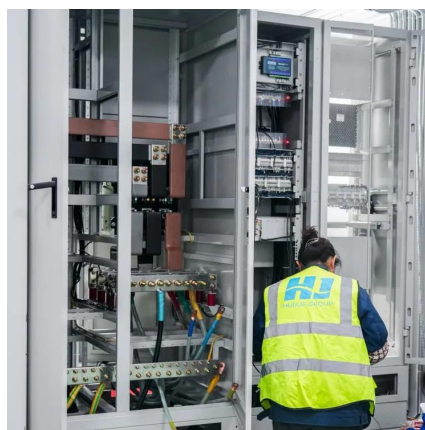
[Request Quote](#)



## String Inverter (28kW)

String Inverter (28kW) SUN2000-28KTL Smart Maximum of 3 MPPT for versatile adaption to different module types or quantities built up with different alignments Up to 6 strings intelligent ...

[Request Quote](#)



## Technical Specifications

a: Two MPPT routes can work independently or work in parallel. b: Three MPPT routes can work independently or work in parallel, or any two of the three MPPT routes can work in parallel.

[Request Quote](#)

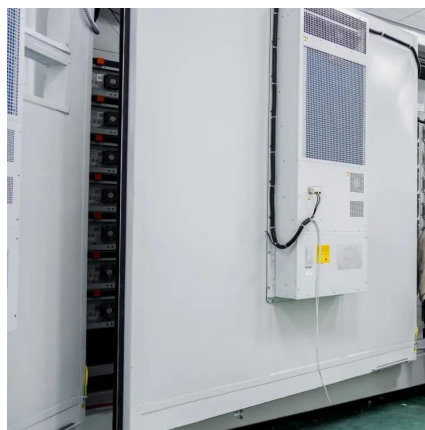
[Huawei Solar Inverter Complete Guide](#)



## [2025: ...](#)

Huawei inverters are compatible with most solar panels, provided the panel specifications fall within the inverter's operating ...

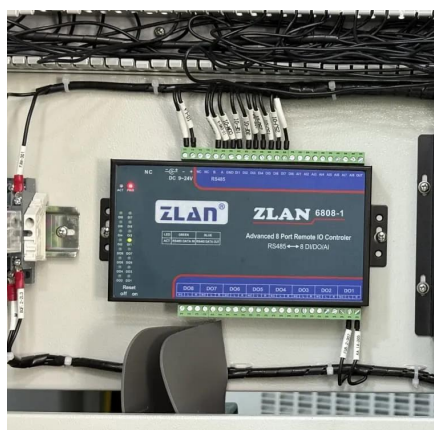
[Request Quote](#)



## Power adjustment parameters

Adjusts the active power output of the inverter by fixed value. This parameter is displayed if Remote power schedule is set to Enable. For 1000 V inverters, the maximum value of this ...

[Request Quote](#)



## Huawei Photovoltaic Grid-Connected Inverter Parameters: The ...

As global energy prices fluctuate, Huawei's grid-tied inverters have become the go-to solution for commercial installations, particularly after their Q1 2025 firmware update ...

[Request Quote](#)



## [Huawei Solar Inverter Complete Guide 2025: Models, ...](#)

Huawei inverters are compatible with most solar panels, provided the panel specifications fall within the inverter's operating parameters. The wide voltage range (120V ...

[Request Quote](#)



## Sun2000 (8 ktl 28kti) user manual 07



The document is the user manual for Huawei's SUN2000 string inverters, ranging from 8kW to 28kW. It provides instructions on installation, ...

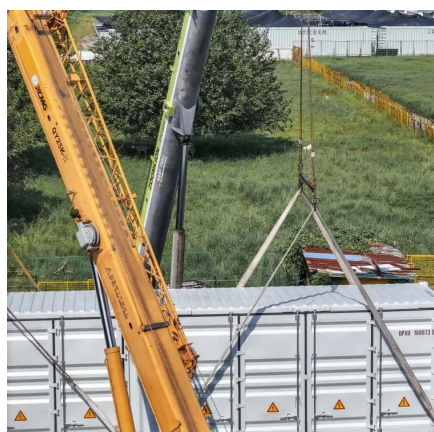
[Request Quote](#)



[HUAWEI SUN2000-28KTL USER MANUAL Pdf Download , ManualsLib](#)

RS485 communications parameters such as the address, protocol, baud rate, and check mode can be set on the monitoring panel. Procedure The following table lists the procedure for ...

[Request Quote](#)



### [Huawei photovoltaic inverter parameter configuration](#)

Full configuration scenario: For a single-phase solar inverter, the number of PV modules connected in series in a PV string cannot exceed 25 and the maximum power of a PV ...

[Request Quote](#)





## Contact Us

---

For catalog requests, pricing, or partnerships, please visit:

<https://energyinnovationday.pl>

Phone: +48 22 335 1273

Email: [info@energyinnovationday.pl](mailto:info@energyinnovationday.pl)

Scan the QR code to contact us via WhatsApp.

