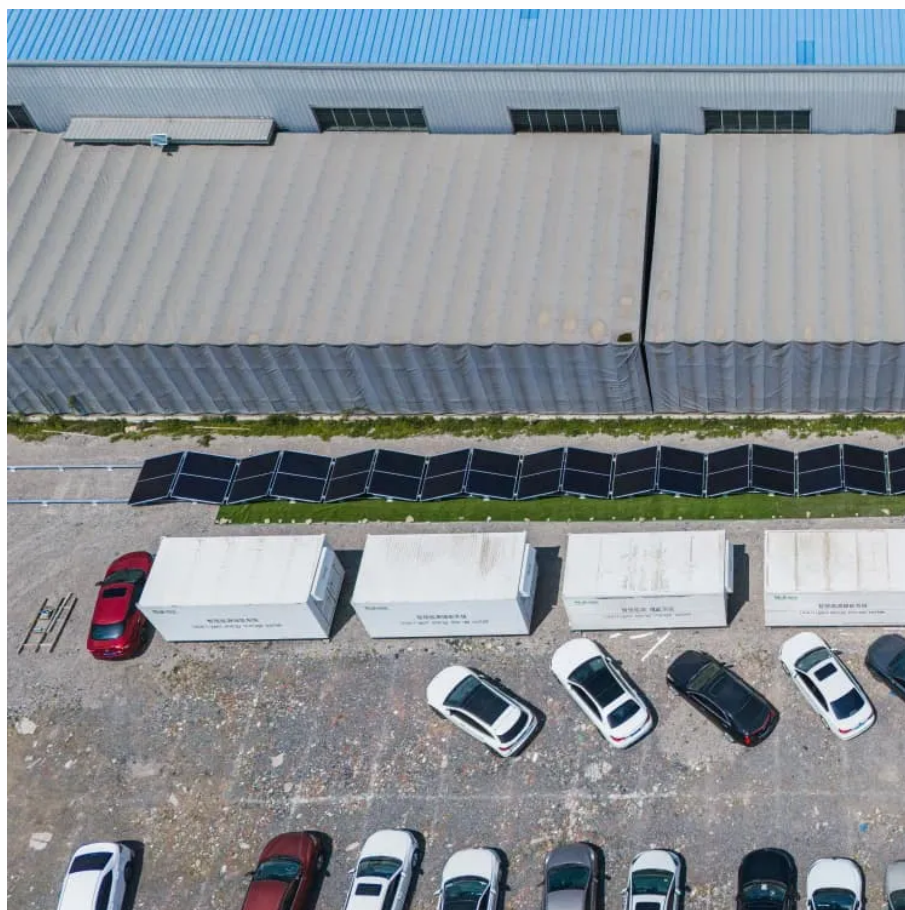




Huawei 5g base station access communication





Overview

How does 5G work?

5G networks divide coverage areas into smaller zones called cells, enabling devices to connect to local base stations via radio. Each station connects to the broader telephone network and the Internet through high-speed optical fiber or wireless backhaul.

Who makes 5G radio & core systems?

Major suppliers of 5G radio and core systems included Altiostar, Cisco Systems, Datang Telecom/Fiberhome, Ericsson, Huawei, Nokia, Qualcomm, Samsung, and ZTE. Huawei was estimated to hold about 70 percent of global 5G base stations by 2023.

Can 5G mmWave networks be used for wireless power transfer?

Research has explored the use of 5G mmWave networks for wireless power transfer. Studies using wavelengths between 1 mm and 10 mm remain experimental. The 5G core (5GC) is a service-oriented, software-defined system that separates control and user planes and supports flexible deployment.

What is a 5G core?

The 5G core (5GC) is a service-oriented, software-defined system that separates control and user planes and supports flexible deployment. It replaces the 4G Evolved Packet Core with modular, software-based network functions.



Huawei 5g base station access communication



Huawei Base Station: Types, Mechanical Properties, and How to ...

Huawei 5G base stations are engineered to support massive machine-type communications (mMTC), a key enabler of IoT ecosystems. They can simultaneously connect ...

[Request Quote](#)

Enterprise Wireless

For governments and industries such as transportation and energy, our enterprise wireless provides purpose-built mobile communications supported by 4G/5G base stations, microwave, ...

[Request Quote](#)



Exploring Huawei's Advanced 5G Base Station ...

One of the standout features of Huawei's 5G base stations is their enhanced capacity. By leveraging technologies such as Massive ...

[Request Quote](#)



DBS5900 Distributed Base Stations -- Huawei ...

The DBS5900 is a wireless access device for the eLTE wireless broadband private network solution. It provides wireless access functions, including ...

[Request Quote](#)



[China Mobile and Huawei Unveil World'](#)

China Mobile has piloted Huawei's universal intelligent service processing units (UISPs) on the radio access network (RAN) side to enable intelligent communications and ...

[Request Quote](#)



[DBS5900 Distributed Base Stations -- Huawei Enterprise](#)

The DBS5900 is a wireless access device for the eLTE wireless broadband private network solution. It provides wireless access functions, including air interface management, access ...

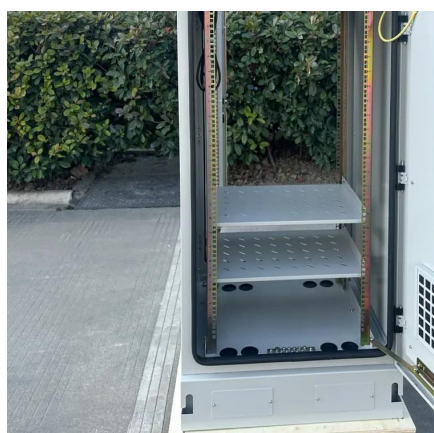
[Request Quote](#)



[China Mobile and Huawei Unveil World'](#)

China Mobile has piloted Huawei's universal intelligent service processing units (UISPs) on the radio access network (RAN) side ...

[Request Quote](#)



[01-13 5G CELLULAR INTERFACE](#)



CONFIGURATION

SA uses an end-to-end 5G network architecture, where 5G standards are used on terminals, base stations, and core networks. SA supports a variety of 5G new services, including eMBB, ...

[Request Quote](#)



Huawei's world's first 5G-A smart base station technology ...

Huawei 5G-A smart base stations redefine the intelligent standards of communication infrastructure through the "AI chip + digital twin + multi-agent" technology stack.

[Request Quote](#)



Exploring Huawei's Advanced 5G Base Station Technology: Key ...

One of the standout features of Huawei's 5G base stations is their enhanced capacity. By leveraging technologies such as Massive MIMO (Multiple Input Multiple Output), ...

[Request Quote](#)



What types of spectrum bands do Huawei's 5G base stations ...

This topic summary discusses the types of spectrum bands supported by Huawei's 5G base stations, including sub-6 GHz bands (low band and mid band) and millimeter wave bands ...

[Request Quote](#)

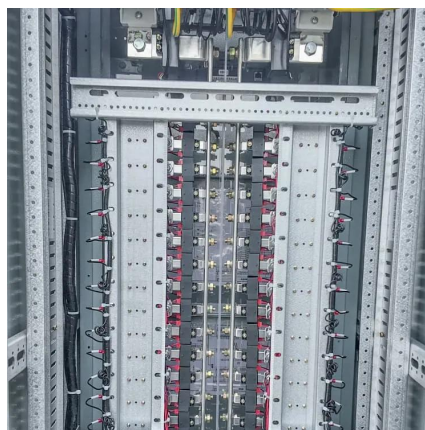


What is huawei base station



Huawei's base stations, such as the DBS5900 and DBS3900, are advanced wireless access devices designed to support various network technologies, including 4G LTE and 5G NR.

[Request Quote](#)



5G

5G is the fifth generation of cellular network technology and the successor to 4G. First deployed in 2019, [1] its technical standards are developed by the 3rd Generation Partnership Project ...

[Request Quote](#)



Contact Us

For catalog requests, pricing, or partnerships, please visit:

<https://energyinnovationday.pl>

Phone: +48 22 335 1273

Email: info@energyinnovationday.pl

Scan the QR code to contact us via WhatsApp.

