



How to trigger the power supply of the battery cabinet





Overview

To activate the backup energy storage cabinet during a power outage, follow these steps: 1. Locate the backup energy storage cabinet, 2. Ensure the cabinet is charged, 3. Power down non-essential devices, 4. Flip the power switch to the ON position, 5. Connect.

To activate the backup energy storage cabinet during a power outage, follow these steps: 1. Locate the backup energy storage cabinet, 2. Ensure the cabinet is charged, 3. Power down non-essential devices, 4. Flip the power switch to the ON position, 5. Connect.

On behalf of everyone at Eaton, we thank you for partnering with us, for trusting us to maintain your business continuity and for preventing downtime at your facility. Our suite of backup power, power distribution and power management products are designed to protect you from a host of threats.

Note: A Note symbol shows the information the user or the service personnel should observe while operating the battery cabinet or conducting service work. Prohibit: A prohibit symbol shows the acts the user or service personnel should NEVER perform during the battery cabinet installation, operation.

This video walks through the correct power-on procedure for JNTech energy storage battery cabinets. Following proper start-up steps ensures system safety, stable operation, and longer service life — ideal for installers, EPCs, and O&M teams worldwide. Show less This video walks through the correct.

This manual contains important instructions that should be followed during installation of your Vertiv™ Liebert® EXS Battery Cabinet and accessories. Read this manual thoroughly, paying special attention to the sections that apply to your installation, before working with the battery system.

power required to keep the batteries at the proper float voltage. When AC power fails, the batteries will discharge in order to provide the necessary backup power to the load. It is the responsibility of the customer to make sure the batteries are not discharged below manufacturer's recommendations.

To activate the backup energy storage cabinet during a power outage, follow these



steps: 1. Locate the backup energy storage cabinet, 2. Ensure the cabinet is charged, 3. Power down non- essential devices, 4. Flip the power switch to the ON position, 5. Connect essential devices to the outlets, 6. How do I connect a battery cabinet to an ups?

Connect the DC+ and DC- cables to the DC+ and DC- terminals. Connect the power cables in the UPS. If more battery cabinets are part of the solution, connect all battery cabinets to the UPS according to the diagram below.

How to install a ups power supply?

The most important aspect of installing a UPS power supply is connecting the batteries. The key to connecting the batteries is to link the positive terminal to the negative terminal, connecting each battery in series, and then leading out two power cables, one positive and one negative, to connect to the air switch. C.

Do I need a pull box with a Battery breaker?

NOTE: If the combined short circuit current of the battery cabinets exceeds the short circuit rating of the UPS, a pull box with fuses or an external box with a battery breaker must be installed. Please contact Schneider Electric for more information and refer to the submittal drawings for your specific UPS.

How do you connect a battery to an air switch?

B. Connect the positive terminal of the battery to the air switch. C. Wrap the battery cables from the next layer to the upper layer with tape to prevent accidental short circuits, and ensure the bolts are securely tightened. D.



How to trigger the power supply of the battery cabinet



Connect the Power Cables

Connect the DC+ and DC- cables to the DC+ and DC- terminals. Connect the power cables in the UPS. If more battery cabinets are part of the solution, connect all battery cabinets to the UPS ...

[Request Quote](#)

How to do UPS Battery Wiring?

Learn how to wire UPS batteries safely with our detailed step-by-step guide. From installation location to proper battery connection and wiring tips, ...

[Request Quote](#)



[How to activate the backup energy storage cabinet ...](#)

The fundamental mechanisms involved in activation generally entail connecting the cabinet to a power source, configuring its settings, ...

[Request Quote](#)



How to do UPS Battery Wiring?

Learn how to wire UPS batteries safely with our detailed step-by-step guide. From installation location to proper battery connection and wiring tips, ensure a secure and efficient UPS setup ...

[Request Quote](#)



[Liebert® EXS External Battery Cabinet Installer/User Guide](#)

If the Vertiv™ Liebert® EXS battery cabinet is installed on a raised floor, the battery power cables and circuit breaker control cables may be routed to the UPS cabinet through the bottom ...

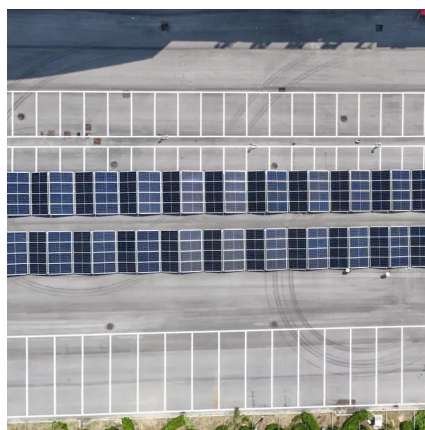
[Request Quote](#)



U-ENM00044

This battery cabinet is equipped with four swivel casters with leveling legs. Use the casters to move the battery cabinet into position and use the leveling feet to make sure the cabinet is ...

[Request Quote](#)



[Energy Storage Battery Cabinet , Power-On Operation Guide](#)

This video walks through the correct power-on procedure for JNTech energy storage battery cabinets. Following proper start-up steps ensures system safety, stable operation, and longer ...

[Request Quote](#)



[Energy Storage Battery Cabinet , Power-](#)



[On Operation Guide](#)

This video walks through the correct power-on procedure for JNTech energy storage battery cabinets. Following proper start-up steps ensures system safety, stable operation, and longer service life

[Request Quote](#)



BC58 Battery Cabinet Installation, Operation, & Maintenance ...

When installing this power system, follow all applicable federal, state and local regulations as well as industry guidelines to insure proper system installation. Only qualified electricians or DC ...

[Request Quote](#)



[Powerware 9390 Integrated Battery](#)



[Battery Cabinet BC43 Installation, Operation, & Maintenance](#)

Mitsubishi Electric BC43 Battery Cabinet Installation, Operation, & Maintenance Manual provides detailed instructions on installation, operation, and maintenance of the battery cabinet.

[Request Quote](#)



How to activate the backup energy storage cabinet during a power ...

The fundamental mechanisms involved in activation generally entail connecting the cabinet to a power source, configuring its settings, assessing the connection to essential ...

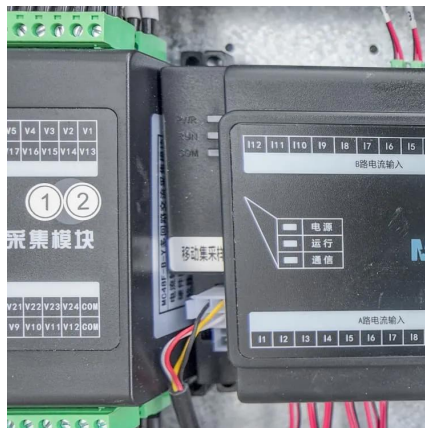
[Request Quote](#)



[Cabinet \(Models IBC-S ...](#)

Locate the battery cabinet-to-battery cabinet breaker sensing cable in the first battery cabinet. Route this connector into the cabinet to the immediate left and mate with the matching ...

[Request Quote](#)



[Eaton Samsung Gen 3 Battery Cabinet Installation and ...](#)

Control wiring can be routed through the sides of the battery cabinets in side by side configurations or through the top of the battery cabinets using conduit in standalone ...

[Request Quote](#)



Contact Us

For catalog requests, pricing, or partnerships, please visit:

<https://energyinnovationday.pl>

Phone: +48 22 335 1273

Email: info@energyinnovationday.pl

Scan the QR code to contact us via WhatsApp.

