



How to connect 32 batteries in battery cabinet





Overview

Easy installation and mounting of the batteries on the wall and into the cabinet makes it space-saving and looks beautiful.

Easy installation and mounting of the batteries on the wall and into the cabinet makes it space-saving and looks beautiful.

Installation Video for cabinet battery and inverters, step-by-step guide teaches you how to install the MOTOMA LiFePO4 solar storage battery and solar hybrid inverter. Motoma cabinet battery is typically used for residence and commerce. more Installation Video for cabinet battery and inverters.

IMPORTANT: Before installing, connecting to supply or operating your Vertiv™ Liebert® ITA2 Battery Cabinet, please review the Safety and Regulatory Statements sheet. For detailed installation, operating, maintenance and troubleshooting information visit the Liebert ITA2 product page for the.

❏ Battery tray: The cabinet include 6 layers totally of battery trays from L1 (bottom) to L6 (up). Step1. Pull out the latch from door hinge then remove the front door. Step 2. Unscrew the M4 screws (12 pcs) by cross screwdriver and then remove the side panels. cabinet. Step 4. Install the battery.

NOTE: This procedure describes how to position and interconnect several battery cabinets. If your system only has one battery cabinet, you only need to follow step 2 and step 3. Remove the side panels that are adjacent to the other battery cabinets. Push the right-most battery cabinet into.

By linking batteries together, you can increase the voltage, capacity (AH / Wh), or both. When you need more power, you can construct a battery bank using widely available batteries. For instance, using a common group-size battery such as a group 24, group 27, group 31, or golf cart GC2 group size.

Secure back box to wall with required lag bolts (not supplied) to support battery weight (86 pounds). Place batteries on shelf (Figure 1). Ensure that the negative and positive poles of the batteries are arranged as shown in Figure 2. Connect wires to batteries as shown in Figures 1 and 2. input. How do you reinstall a battery cabinet?



Reinstall the left side panel on the left-most battery cabinet after interconnection. Push the third battery cabinet into position, align with the seismic anchoring (if any), level the battery cabinet, and interconnect with the other battery cabinets as described in step 2, step 3, and step 5.

How do you level a battery cabinet?

Remove the side panels that are adjacent to the other battery cabinets. Push the right-most battery cabinet into position. For seismic anchoring, ensure that the rear seismic bracket connects to the rear anchors. Lower the levelling feet until they connect with the floor - use a bubble-leveler to ensure that the cabinet is level.

How do you connect a battery in a series?

To connect batteries in a series, a jumper wire connects a battery's negative terminal to another battery's positive terminal. This leaves you with a positive terminal at the beginning of the battery pack and a negative terminal at the end of the battery pack for your application.

What happens if you connect a battery in a series?

Connecting batteries in series increases the voltage of a battery pack, but the AH rating (also known as Amp Hours) remains the same. To connect batteries in a series, a jumper wire connects a battery's negative terminal to another battery's positive terminal.



How to connect 32 batteries in battery cabinet



[Step-by-Step Solar Battery Cabinet Installation Guide](#)

This article provides a detailed guide on installing a solar battery cabinet, helping you complete the installation process smoothly and enjoy the benefits of clean energy.

[Request Quote](#)

a@Simplex

Place batteries on shelf (Figure 1). Ensure that the negative and positive poles of the batteries are arranged as shown in Figure 2. Connect wires to batteries as shown in Figures 1 and 2. input ...

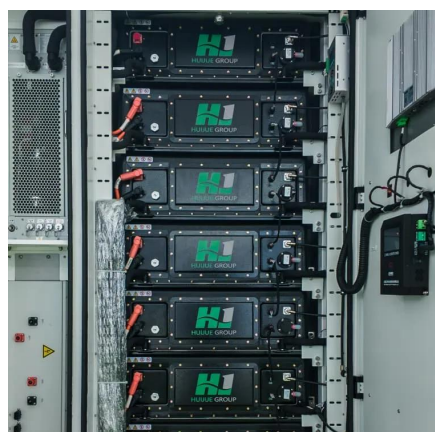
[Request Quote](#)



[How To Connect Batteries In Series and Parallel](#)

Learn how to configure batteries in series, parallel, or series and parallel. Complete battery configuration guide for increased power at BatteryStuff !

[Request Quote](#)



[SolaHD S4K-D External Battery Cabinet QIG Manual PDF](#)

Connect the battery cable accessory to one end of the battery port on the rear panel of the UPS and connect the other end to any battery port on the rear panel of the EBC.



[Request Quote](#)



[How To Connect Batteries In Series and Parallel](#)

Step 1 - Series First
Step 2 - Parallel Each Series Set
Quick Vocabulary Reference
First, we recommend putting each set in series first. To do this, you will use a jumper between the inner positive and negative terminals of each set to increase the voltage, as seen in the picture below:
See more on [battery stuff the fire panel](#) [PDF]

a@Simplex - [cdn.thefirepanel](#)

Place batteries on shelf (Figure 1). Ensure that the negative and positive poles of the batteries are arranged as shown in Figure 2. Connect wires to batteries as shown in Figures 1 and 2. input ...

[How to Install cabinet batteries and Inverters](#)

Installation Video for cabinet battery and inverters, step-by-step guide teaches you how to install the MOTOMA liFePO4 solar ...

[Request Quote](#)

[Request Quote](#)



INSTALLATION MANUAL

After selecting an install location on a wall, determine where to do the 1.5" max knockout based on wall space, how many Storz Wall Mount



Battery Cabinets and Batteries are being installed,
...

[Request Quote](#)



[Vertiv™ Liebert® ITA2 Battery Cabinet](#)

Connect a battery-to-battery cable to Connector B on the first cabinet in the previous string, and to Connector A on first cabinet in the additional string. Connect the second string in additional ...

[Request Quote](#)



[How to Install cabinet batteries and Inverters](#)

Installation Video for cabinet battery and inverters, step-by-step guide teaches you how to install the MOTOMA liFePO4 solar storage battery and solar hybrid inverter.

[Request Quote](#)

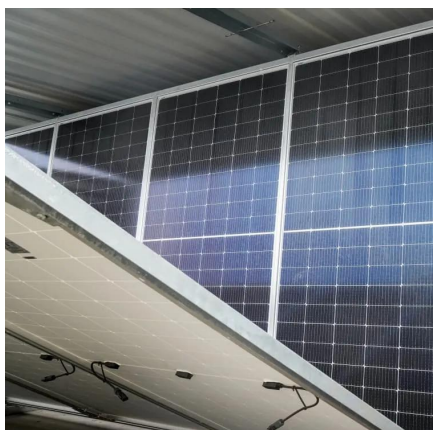
[-48 VDC Battery Cabinet Installation and User Manual ...](#)

Connect the power system's battery cable terminated in an Anderson connector to the first battery cabinet's battery cable terminated in a mating Anderson connector.

[Request Quote](#)



[Position and Interconnect the Battery](#)



Cabinets

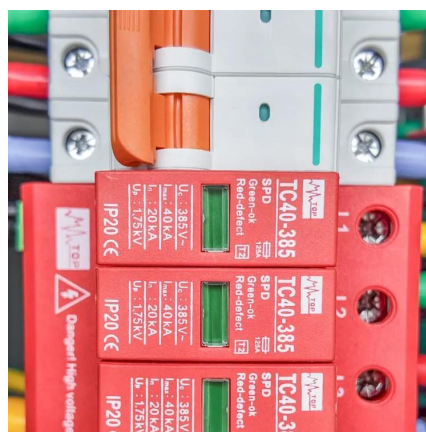
NOTE: This procedure describes how to position and interconnect several battery cabinets. If your system only has one battery cabinet, you only need to follow step 2 and step 3.

[Request Quote](#)

Dettaglio 42U-100Ah-12V Battery Cabinet User Manual

Pull out the latch from door hinge then remove the front door. Step 2. Unscrew the M4 screws (12 pcs) by cross screwdriver and then remove the side panels. cabinet. Step 4. Install the battery ...

[Request Quote](#)





Contact Us

For catalog requests, pricing, or partnerships, please visit:

<https://energyinnovationday.pl>

Phone: +48 22 335 1273

Email: info@energyinnovationday.pl

Scan the QR code to contact us via WhatsApp.

