



How to collect the grid-connected equipment fee for the solar container communication station inverter





Overview

The Rule 21 Optional Pre-Application Report Request, containing fee payment instructions, is available at the following link: [Rule 21 Optional Pre-Application Report Request](#) Upon receipt of a completed Pre-Application Report Request and the request fee, SCE will provide.

The Rule 21 Optional Pre-Application Report Request, containing fee payment instructions, is available at the following link: [Rule 21 Optional Pre-Application Report Request](#) Upon receipt of a completed Pre-Application Report Request and the request fee, SCE will provide.

Electric Rule 21 (Rule 21) is a tariff that describes the interconnection, operating and metering requirements for generation facilities to be connected to an investor-owned utility's (IOUs) distribution system and transmission system over which the California Public Utilities Commission.

Under Florida's net metering rules, we allow interconnection of qualifying renewable energy systems to offset all or a part of our customer's energy use at their metered service account. In order to be approved for interconnection under these net metering rules, your renewable system must be.

Solar inverters can do more than just convert your solar energy to send it to the grid. They can also improve the quality of power on the grid. Improving power quality makes the whole grid more efficient. In exchange for contributing to the grid power quality you will earn \$25 for enrolling in the.

On October 30, 2025, from 10-11am Pacific Time via Teams only, pursuant to a requirement in the WDAT storage settlement, SCE will hold a call to provide an update on the status of the implementation of SCE's distributed energy resource management system ("DERMS") as it pertains to energy storage.

Executed agreements are generally required for systems greater than 500kW. SMUD requires a one-time fee for all interconnection applications. Get detailed information about interconnection fees. SMUD uses either Rule 21 or Advanced Inverter Functions (AIF) settings as part of the Interconnection.

Earn a \$25 enrollment incentive and a \$20 annual incentive for supporting a



healthier grid through clean, renewable energy. Solar inverters can do more than just convert your solar energy to send it to the grid. They can also improve the quality of power on the grid. Improving power quality makes. How do inverters provide grid services?

In order to provide grid services, inverters need to have sources of power that they can control. This could be either generation, such as a solar panel that is currently producing electricity, or storage, like a battery system that can be used to provide power that was previously stored.

How does a grid forming inverter work?

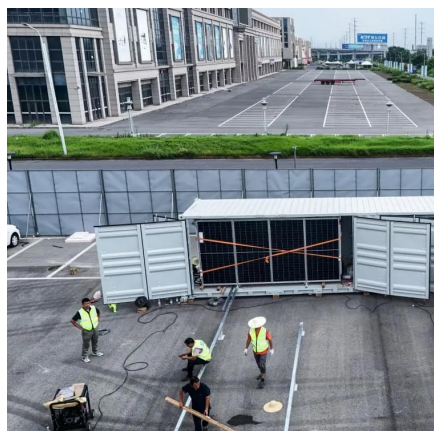
Grid-forming inverters can start up a grid if it goes down—a process known as black start. Traditional “grid-following” inverters require an outside signal from the electrical grid to determine when the switching will occur in order to produce a sine wave that can be injected into the power grid.

How does a string inverter work?

String inverters connect a set of panels—a string—to one inverter. That inverter converts the power produced by the entire string to AC. Although cost-effective, this setup results in reduced power production on the string if any individual panel experiences issues, such as shading.



How to collect the grid-connected equipment fee for the solar contain



Connected Solutions

If at any time we change a setting on your solar inverter that decreases your solar production, National Grid will pay you an additional ...

[Request Quote](#)

Connected Solutions

If at any time we change a setting on your solar inverter that decreases your solar production, National Grid will pay you an additional ConnectedSolutions incentive to make up for it.

[Request Quote](#)



[Grid Interconnections with Solar for Business , SCE](#)

Please use this link to access the Grid Interconnection Processing Tool. We are currently accepting new Wholesale Distribution Access Tariff (WDAT) Interconnection Requests and ...

[Request Quote](#)



[Electric Rule 21: Generating Facility Interconnections](#)

The following guidelines were developed during 2024 to clarify helpful and efficient practices for qualifying equipment as "Certified Equipment," as defined under Rule 21 Section L.2.a, for ...



[Request Quote](#)



Connected Solutions

If you own a SolarEdge inverter that is connected to the SolarEdge monitoring platform, you should submit the application and National Grid will evaluate your eligibility.

[Request Quote](#)

Residential Clean Energy Credit

If you invest in renewable energy for your home such as solar, wind, geothermal, fuel cells or battery storage technology, you may qualify for an annual residential clean energy tax credit.

[Request Quote](#)



Interconnection information

Get detailed information about interconnection fees. SMUD uses either Rule 21 or Advanced Inverter Functions (AIF) settings as part of the Interconnection application process.

[Request Quote](#)

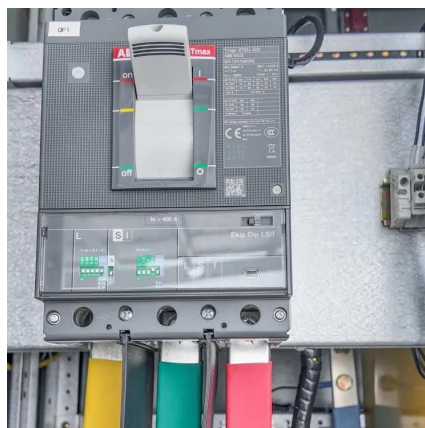
[FPL , Clean Energy , Net Metering](#)



Guidelines

You must notify us of battery systems installed without a renewable generation system and designed to charge from the grid and operate interconnected with the grid.

[Request Quote](#)



Generator Interconnection Processes . SCE

Please use this link to access the Grid Interconnection Processing Tool. We are currently accepting new Wholesale Distribution Access Tariff (WDAT) Interconnection ...

[Request Quote](#)



Solar Integration: Inverters and Grid Services Basics

An inverter is one of the most important pieces of equipment in a solar energy system. It's a device that converts direct current (DC) electricity, which is what a solar panel generates, to ...

[Request Quote](#)



Solar Integration: Inverters and Grid Services Basics

An inverter is one of the most important pieces of equipment in a solar energy system. It's a device that converts direct current (DC) electricity, ...

[Request Quote](#)



Interconnecting Generation under



Rule 21 Solar for Business , SCE

At any time, you can request technical information regarding SCE's electric system around a potential interconnection site. To request this information, you need to provide details of the ...

[Request Quote](#)





Contact Us

For catalog requests, pricing, or partnerships, please visit:

<https://energyinnovationday.pl>

Phone: +48 22 335 1273

Email: info@energyinnovationday.pl

Scan the QR code to contact us via WhatsApp.

