



How to check the inverter of local solar container communication station





Overview

To check a solar inverter, follow these steps: 1. Ensure system safety, 2. Examine indicator lights, 3. Review the inverter display for errors or warnings, 4. Measure voltage output with a multimeter, 5. Consult the user manual for troubleshooting.

To check a solar inverter, follow these steps: 1. Ensure system safety, 2. Examine indicator lights, 3. Review the inverter display for errors or warnings, 4. Measure voltage output with a multimeter, 5. Consult the user manual for troubleshooting.

You can connect to your inverter by scanning the barcode with your phone's camera. If you are connecting to a previously used inverter, click "continue with the last scanned QR code" instead of rescanning the same code. If you are unable to scan the barcode, you can insert the inverter connection.

Solar panel system communications typically includes several interconnected components: the inverter, which converts solar energy into usable electricity; communication gateways or data loggers, which aggregate system data; and internet-enabled interfaces that relay this information to an online.

Tutorial and DIY overview of digital multimeter (DMM) usage for solar power enthusiasts. Topics include diagnosing DC-AC inverter direct short, open circuit, resistance check, diode check, checking battery pack voltages, cell voltage, BMS status. Plus general troubleshooting and testing knowledge.

As an important component of the entire power station, the inverter can detect almost all parameters of the power station, from the DC components on top to the grid connected equipment on the bottom. If there is an abnormality, the health status of the supporting equipment in the power station can.

To check a solar inverter, follow these steps: 1. Ensure system safety, 2. Examine indicator lights, 3. Review the inverter display for errors or warnings, 4. Measure voltage output with a multimeter, 5. Consult the user manual for troubleshooting. Specifically, the first step of ensuring the.

What I mean by a communication issue is basically when the inverter is not reporting to the monitoring portal. This is an easy fix. First, you can either plug in an Ethernet cable, or you can turn off your solar breaker and turn it back on, or you



can turn off your AC disconnect and turn it back. How do I Configure my inverter communication?

To configure your inverter communication: Log into mySolarEdge - contact your installer if you still need a Username/Password to access the Monitoring Platform. Tap " Inverter Communication " in the menu. Follow the app's instructions to connect to the inverter's WiFi (if you are not already connected).

How do I connect my inverter to my phone?

You can connect to your inverter by scanning the barcode with your phone's camera. If you are connecting to a previously used inverter, click "continue with the last scanned QR code" instead of rescanning the same code. If you are unable to scan the barcode, you can insert the inverter connection details manually by clicking the link at the bottom.

How do I know if my SolarEdge monitoring server connection is successful?

To confirm the connection is successful,click on "inverter communication" in the menu. Connect to the inverter and verify the status as S_OK. S_OK displayed here or in the Inverter Status menu means the communication to SolarEdge Monitoring Server is successful.

When do I need to reconfigure my inverter communication?

You may need to reconfigure your inverter communication in certain cases, such as when your Wi-Fi network or password has changed. To configure your inverter communication: Log into mySolarEdge - contact your installer if you still need a Username/Password to access the Monitoring Platform. Tap " Inverter Communication " in the menu.



How to check the inverter of local solar container communication station



[How to check solar inverter , NenPower](#)

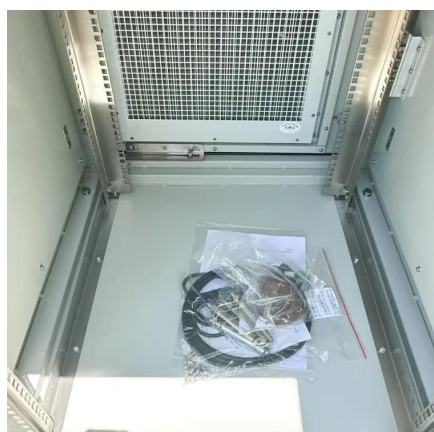
To check a solar inverter, follow these steps: 1. Ensure system safety, 2. Examine indicator lights, 3. Review the inverter display for errors or warnings, 4. Measure voltage ...

[Request Quote](#)

[Solar container communication station Inverter Regulations](#)

What Are Shipping Container Solar Systems? Understanding the Basics A shipping container solar system is a modular, portable power station built inside a standard steel

[Request Quote](#)



Common faults and solutions of inverters , Solar Inverter, Inverter

Solution: Check the parameters of the inverter, determine the input range of the DC voltage, and then measure whether the open circuit voltage of the string is within the allowable range of the ...

[Request Quote](#)

Verifying Inverter Status

You can connect to your inverter by scanning the QR code with your phone's camera. If you are connecting to a previously used inverter, click "continue with the last scanned QR code" ...

[Request Quote](#)



[How to check solar inverter , NenPower](#)

To check a solar inverter, follow these steps: 1. Ensure system safety, 2. Examine indicator lights, 3. Review the inverter display ...

[Request Quote](#)



[Cellular Plug-in Troubleshooting Guide](#)

NOTE Some models may have a green power LED labeled as LED6 instead of LED1. Reconnect to the inverter using SetApp and navigate to Monitoring Communications to verify if the ...

[Request Quote](#)



[How to Fix Solar Inverter Communication Issues](#)

Learn how to fix common solar inverter communication issues with these simple steps from a service intake specialist at StraightUp Solar.

[Request Quote](#)



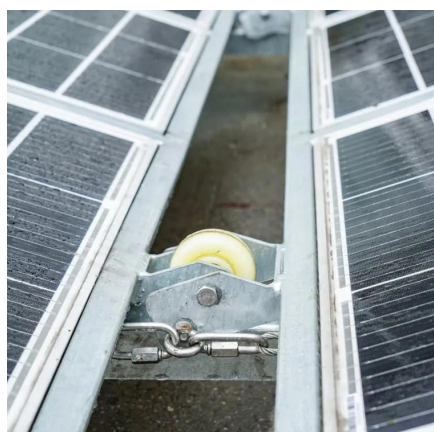
How to Check Your Inverter with a



#Multimeter! #DIY Solar Power

Tutorial and DIY overview of digital multimeter (DMM) usage for solar power enthusiasts.

[Request Quote](#)



Configuring Inverter Communication

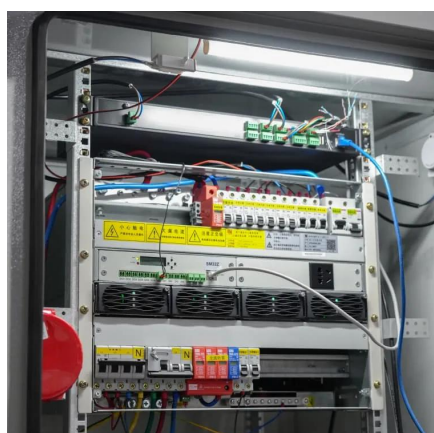
Connect to the inverter and verify the status as S_OK. S_OK displayed here or in the Inverter Status menu means the communication to SolarEdge Monitoring Server is successful.

[Request Quote](#)

Verifying Inverter Status

You can connect to your inverter by scanning the barcode with your phone's camera. If you are connecting to a previously used inverter, click "continue with the last scanned QR code" ...

[Request Quote](#)



[Solar Communication Issues & Troubleshooting](#)

Solar communication is vital to solar production and savings. Learn the top solar communication issues and troubleshooting steps to take.

[Request Quote](#)

[Solar Communication Issues &](#)



[Troubleshooting](#)

Solar communication is vital to solar production and savings. Learn the top solar communication issues and troubleshooting steps to take.

[Request Quote](#)





Contact Us

For catalog requests, pricing, or partnerships, please visit:

<https://energyinnovationday.pl>

Phone: +48 22 335 1273

Email: info@energyinnovationday.pl

Scan the QR code to contact us via WhatsApp.

