



# How much power does a container generator need





## Overview

---

For a 20' unit: A 9,000-watt generator is recommended. For a 40' unit: A 12,000-watt generator is recommended. Can I use an extension cord to power the container unit?

No, it is not recommended to use an extension cord due to the high power requirements.

For a 20' unit: A 9,000-watt generator is recommended. For a 40' unit: A 12,000-watt generator is recommended. Can I use an extension cord to power the container unit?

No, it is not recommended to use an extension cord due to the high power requirements.

Mobile Modular Portable Storage provides detailed electrical specifications to ensure the safe and efficient operation of their 20' and 40' office and combo container units. Key details include: Standard Electrical Packages: Designed for 20' and 40' office and combo containers, these packages.

Our primary design challenges in developing this line of containerized generators were usability, reliability and functionality for the end user. That's why we intentionally made these units easily configurable to the needs of any application, from rental to disaster relief to mining — with a whole.

Before you buy or rent a high-powered generator for your shipping container office, you'll need to make a list of all the devices you use. This includes HVAC, lighting, computers, printers, routers, coffee makers, and TVs. Next, you'll need to look into their specs and write down each one of their.

The "Clip On" Generator Set is designed to clip on to the front frame of a refrigerated container. The water cooled diesel generator can provide continuous (single voltage) electrical power to intermodal refrigerated containers. This unit is self contained with an integral fuel tank combined with.

When considering which generator to purchase, it's important to buy a generator that has enough power for what you need to power. Wattage is broken down into



two specifications: starting watts and running watts. If you're not sure what level of power you need, our generator product selector can.

When considering generator power, you need to know the wattage of all the equipment used inside your portable office, including HVAC units, lighting, computers, printers, TVs and coffee machines. Most devices will list either their total wattage or their amperage and voltage. Add up the total.



## How much power does a container generator need



### Choose the Right Generator for Container Offices , Conexwest

Find the perfect generator for shipping container offices with insights on power needs, efficiency, and reliability.

[Request Quote](#)

### Genset for reefer container , MT Container - Container Sales and ...

Both types of generators are often installed with controllers or remote monitoring, ensuring smooth functionality and low energy consumption. Depending on the type and contents of the ...

[Request Quote](#)



### Generator Set "Clip On" Type

The water cooled diesel generator can provide continuous (single voltage) electrical power to intermodal refrigerated containers. This unit is self contained with an integral fuel tank ...

[Request Quote](#)

### Containerized Generators

Simply put, dual packs are two parallel generators in one ISO container: Two 500 kW generators could be paralleled to achieve a 1000 kW output, or ...

[Request Quote](#)



### [PowerLINE® Generator Sets , Carrier Transicold](#)

Carrier's industry-leading PowerLINE Generator Sets are designed and built for continuous, unattended operation for all refrigerated containers transported by road or rail worldwide.

[Request Quote](#)



### [Portable Office Generators , Southwest Mobile Storage](#)

We're often asked what types and brands of generators are best for portable offices used on construction sites. In this post, you'll learn how to figure out your wattage and what to ...

[Request Quote](#)



### **Containerized Generators**

Simply put, dual packs are two parallel generators in one ISO container: Two 500 kW generators could be paralleled to achieve a 1000 kW output, or two 625 kW generators to achieve 1250 ...

[Request Quote](#)



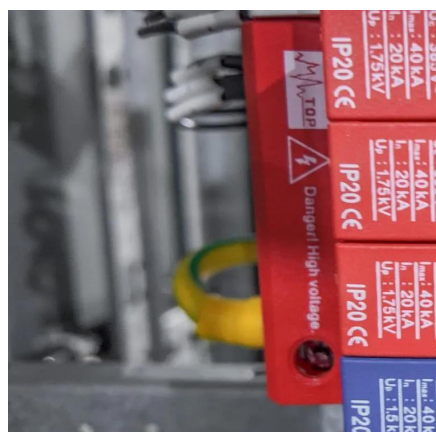
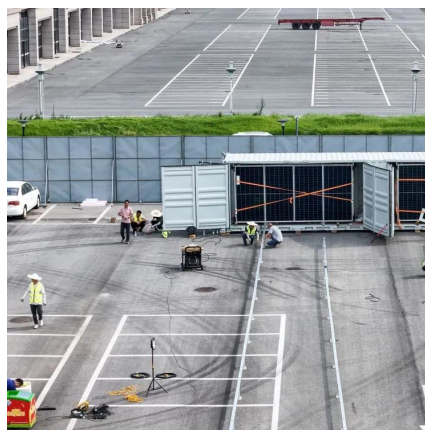
### [Electrical Requirements for Portable](#)



## [Storage Units ...](#)

Ensure safe and efficient power setup with our detailed electrical specifications for Mobile Modular Portable Storage units.

[Request Quote](#)



## **Electrical Requirements for Portable Storage Units , Portable ...**

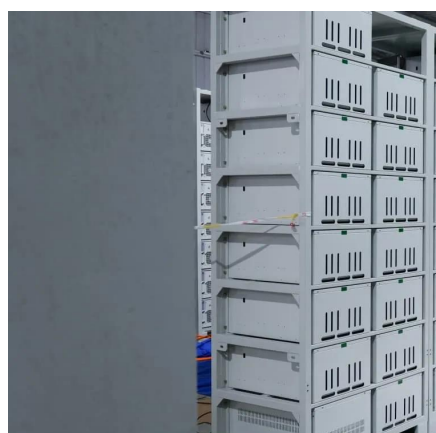
Ensure safe and efficient power setup with our detailed electrical specifications for Mobile Modular Portable Storage units.

[Request Quote](#)

## [Container Genset vs. Traditional Generators: Which is Best?](#)

When considering power generation options, many people find themselves comparing Container Gensets to traditional generators. This article aims to clarify the ...

[Request Quote](#)



## [ISO Container Generator: Unleashing Power on the Go](#)

It's essential to identify how much power you'll require from a generator. This can be calculated based on the appliances or machinery you plan to run simultaneously.

[Request Quote](#)

## [Generator Sizing Guide: What Size](#)



## [Generator Do You Need?](#)

When considering which generator to purchase, it's important to buy a generator that has enough power for what you need to power. Wattage is broken down into two ...

[Request Quote](#)





## Contact Us

---

For catalog requests, pricing, or partnerships, please visit:

<https://energyinnovationday.pl>

Phone: +48 22 335 1273

Email: [info@energyinnovationday.pl](mailto:info@energyinnovationday.pl)

Scan the QR code to contact us via WhatsApp.

