



How many volts is the low voltage of a 12v inverter





Overview

What voltage is a 12V inverter?

Inverters come in various configurations, each designed for specific power systems. Common rated input voltages include 12V, 24V, and 48V. The choice depends on the application, the size of the power system, and the available power source. A 12V inverter is commonly used for smaller applications, such as in vehicles or small off-grid setups.

What is the cut off voltage on a 12V inverter?

For a 12V inverter, the cut-off inverter voltage is often set around 9.5VDC. Dropping below this threshold triggers a shut-off mechanism to preserve the battery's health and longevity. How do you check the voltage on an inverter?

.

What is a safe voltage for a 12V inverter?

For a 12V inverter, the maximum input inverter voltage is typically around 16VDC. This safety margin provides a buffer to accommodate fluctuations in the power source and protect the inverter from potential damage. What happens if voltage is too high for inverter?

.

What voltage does an inverter use?

In different countries, the applicable AC voltage is different, and most countries use 110v, 120v output inverter voltage. You can confirm on the search engine or see how much AC voltage the home appliance label uses. How can the quality of inverter output voltage be measured?



How many volts is the low voltage of a 12v inverter



[Inverters 101: Understanding amps and volts](#)

Note that on the 12-volt side of the inverter you need 1,200 watts going in, which works out to 100 amps x 12 volts = 1,200 watts. But on the 120-volt side of the inverter you get ...

[Request Quote](#)

Many

Many can be traced back to the Welsh word mynych meaning "frequent." To get many of something, you do something frequently, or often, like having many miles on a car because ...

[Request Quote](#)



[Inverter Specifications and Data Sheet](#)

It is 230 V at 50 Hz for many other countries. Peak Efficiency. The peak efficiency is the highest efficiency that the inverter can achieve. Most grid-tie inverters have peak efficiencies above ...

[Request Quote](#)



Many

A large number of persons or things: "For many are called, but few are chosen" (Matthew 22:14).

[Request Quote](#)



many

Many, innumerable, manifold, numerous imply the presence or succession of a large number of units. Many is a popular and common word for this idea: many times. Numerous, a more ...

[Request Quote](#)



[Inverter Specifications and Data Sheet](#)

A 12V DC power inverter is a device that converts low-voltage direct current (DC) power from a 12V battery (such as a car battery or ...

[Request Quote](#)



[Inverter Low Voltage Cutoff--Why SO low?](#)

I want to protect my 2 x 105AH FLA batteries, but have been surprised to see that the low voltage cutoffs on inverters tends to be at about 9-10 VDC (often with an alarm starting ...

[Request Quote](#)

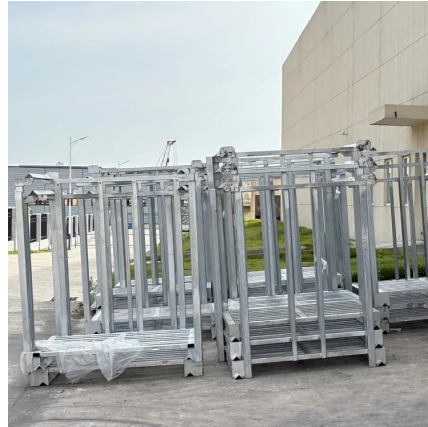


Understanding inverter voltage



For a 12V inverter, the cut-off inverter voltage is often set around 9.5VDC. Dropping below this threshold triggers a shut-off mechanism to preserve the battery's health ...

[Request Quote](#)



many

Many is used only with the plural of countable nouns (except in the combination many a). Its counterpart used with uncountable nouns is much. Many and much merge in the ...

[Request Quote](#)

[What is the voltage of a 12V inverter battery? - Ova](#)

A healthy, fully charged 12V inverter battery will typically display a voltage in the range of 12.6 to 12.8 volts. While it's nominally referred to as "12V," its actual voltage ...

[Request Quote](#)



How Many Volts Does an Inverter Use? A Complete Guide to Voltage ...

From 12V RV systems to megawatt-scale solar farms, understanding inverter voltage requirements ensures safe and efficient operation. Remember: proper voltage selection isn't ...

[Request Quote](#)

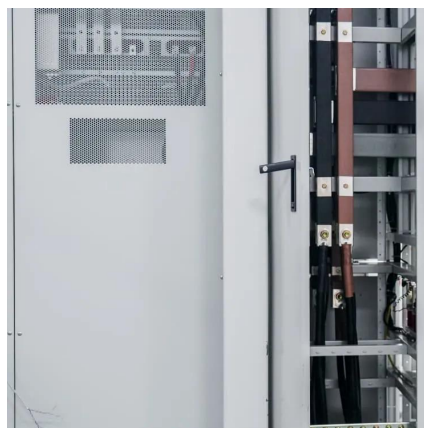
[many , Dictionaries and vocabulary tools](#)



[for English](#)

many or much? Many is used with words for things that we can count. Much is used with words for things that we cannot count. Compare: Do you have many things to do today? Do you have ...

[Request Quote](#)



How Many Volts Does an Inverter Use? A Complete Guide to ...

From 12V RV systems to megawatt-scale solar farms, understanding inverter voltage requirements ensures safe and efficient operation. Remember: proper voltage selection isn't ...

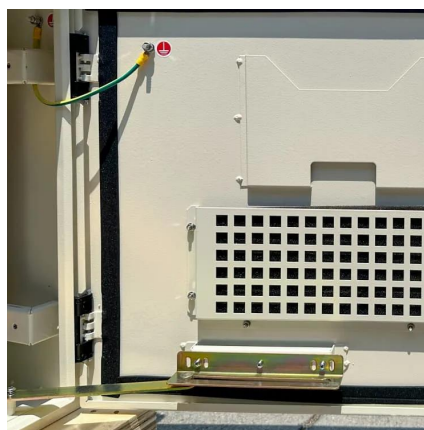
[Request Quote](#)



MANY Definition & Meaning

The meaning of MANY is consisting of or amounting to a large but indefinite number. How to use many in a sentence.

[Request Quote](#)



12 Volt DC Power Inverter: In-Depth Learning and Buying Guide

A 12V DC power inverter is a device that converts low-voltage direct current (DC) power from a 12V battery (such as a car battery or deep-cycle battery) into 120V alternating ...

[Request Quote](#)



[MANY definition and meaning , Collins](#)



[English Dictionary](#)

You use many to indicate that you are talking about a large number of people or things. I don't think many people would argue with that. Not many films are made in Finland. Do you keep ...

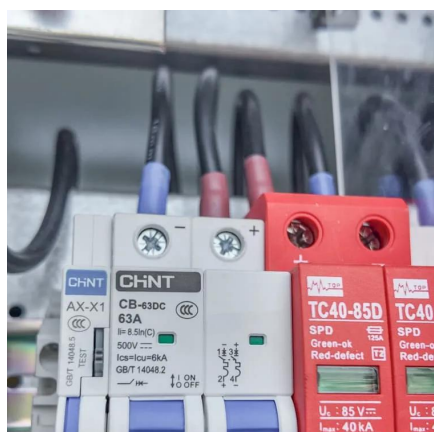
[Request Quote](#)



Inverter Battery Voltage Chart

For example, a fully charged 12V battery usually reads around 12.6 to 12.8 volts. If the voltage falls to about 12.0 volts, it's nearing a low state of charge, indicating that ...

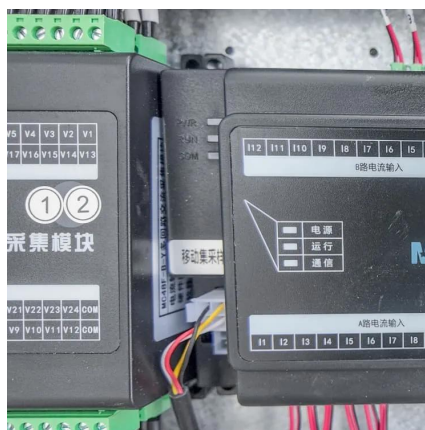
[Request Quote](#)



[MANY Definition & Meaning , Dictionary](#)

MANY definition: constituting or forming a large number; numerous. See examples of many used in a sentence.

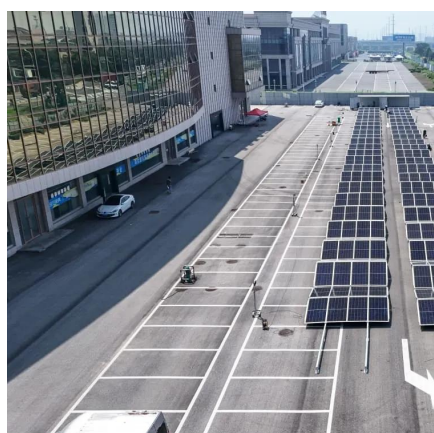
[Request Quote](#)



MANY , English meaning

We use many to refer to a large number of something countable. We most commonly use it in questions and in negative sentences: ...

[Request Quote](#)

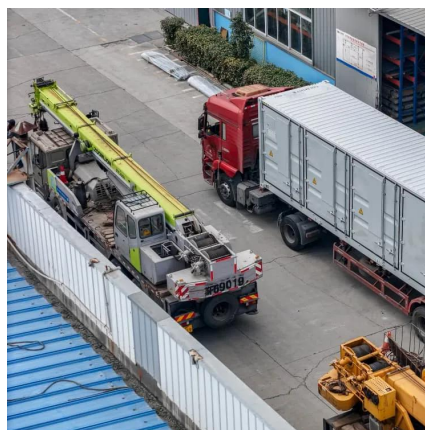


Power Inverter Buying Guide , Eaton



However, typical 12-volt or 24-volt batteries provide only relatively low-voltage power. Depending on your location, appliances need to run on ...

[Request Quote](#)



[Inverters 101: Understanding amps and volts](#)

Note that on the 12-volt side of the inverter you need 1,200 watts going in, which works out to 100 amps x 12 volts = 1,200 watts. But ...

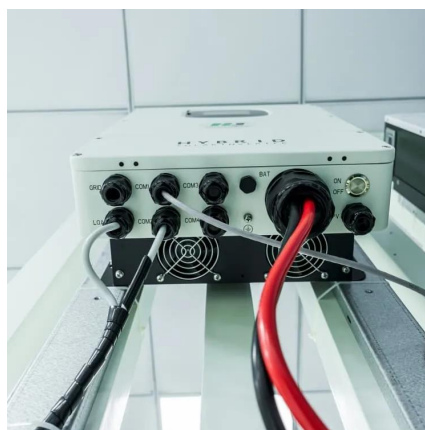
[Request Quote](#)



[Inverter Battery Voltage: How Many Volts Are Needed For ...](#)

A 12-volt system is sufficient for smaller applications, while 48-volt systems are common in larger, grid-tied setups. Choosing the right voltage ensures that the system ...

[Request Quote](#)



many determiner

Definition of many determiner in Oxford Advanced Learner's Dictionary. Meaning, pronunciation, picture, example sentences, grammar, usage notes, synonyms and more.

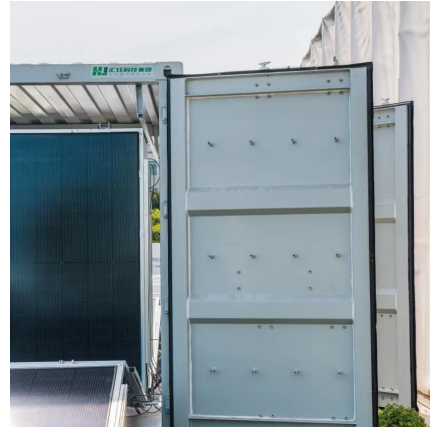
[Request Quote](#)

Power Inverter Buying Guide , Eaton



However, typical 12-volt or 24-volt batteries provide only relatively low-voltage power. Depending on your location, appliances need to run on 120-volt or 230-volt AC power.

[Request Quote](#)





Contact Us

For catalog requests, pricing, or partnerships, please visit:

<https://energyinnovationday.pl>

Phone: +48 22 335 1273

Email: info@energyinnovationday.pl

Scan the QR code to contact us via WhatsApp.

