



How many power sources should a wind power base station use





Overview

According to a 2022 assessment, the nation has 2.2–15.1 terawatts of land-based resource potential, spanning across all 50 states and U.S. territories, which far exceeds the nation’s electricity needs.

According to a 2022 assessment, the nation has 2.2–15.1 terawatts of land-based resource potential, spanning across all 50 states and U.S. territories, which far exceeds the nation’s electricity needs.

Renewable sources provided 9%, 75% of that from hydro power. Wind power provided 0.4%. In 2010, coal provided 45%, natural gas 24%, nuclear 20%, oil 0.9%, renewables 10% (of which 60% was hydro), and wind 2.3%. Electricity generation increased from 2004 to 2010 by almost 4%. (See .) Why don’t we.

wind resource results in the turbine operating at changing power levels. At good wind energy sites, this variability results in the turbine operating at higher capacity factors. Most 3 MW—more than twice the size of the average turbine capacity in 2000. At.

Base load power sources are the plants that operate continuously to meet the minimum level of power demand 24/7. Base load plants are usually large-scale and are key components of an efficient electric grid. Base load plants produce power at a constant rate and are not designed to respond to peak.

The power land-based wind turbines generate can range from 100 kilowatts (usually for distributed purposes) to as much as several megawatts (for utility-scale purposes)—and they’re growing in both capacity and physical size. In 2022, turbines grew to just under 140 meters (~460 feet) tall, from.

Wind power is the use of wind energy to generate useful work. Historically, wind power was used by sails, windmills and windpumps, but today it is mostly used to generate electricity. This article deals only with wind power for electricity generation. Today, wind power is generated almost.

Land-use descriptions for many projects are available from various permitting agencies and other public sources, but we are not aware of any single source that compiles or summarizes this data. In addition, there is limited information



comparing land use for wind power plants across different.



How many power sources should a wind power base station use



[National Wind Watch , The Grid and Industrial Wind Power](#)

Base load is typically provided by large coal-fired and nuclear power stations. They may take days to fire up, and their output does not vary.

[Request Quote](#)

Load Ranges of Power Plants

Renewable energy systems such as solar and wind power are best suited for medium-load power plants. These are intermittent energy sources whose output and capacity ...

[Request Quote](#)



Land-Use Requirements of Modern Wind Power Plants in the ...

Land-use descriptions for many projects are available from various permitting agencies and other public sources, but we are not aware of any single source that compiles or summarizes this data.

[Request Quote](#)



U.S. Wind Turbine Database

Technical specifications of the turbines are based on the make and model and other information collected. With the release of this public version, we hope researchers and other interested ...

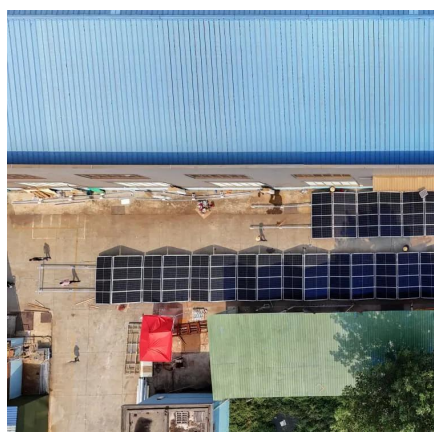
[Request Quote](#)



9.1. Base Load Energy Sustainability , EME 807: Technologies for

Hydropower and geothermal power can also be used for base load electricity generation if those resources are regionally available. The renewable energy systems, such as solar and wind, ...

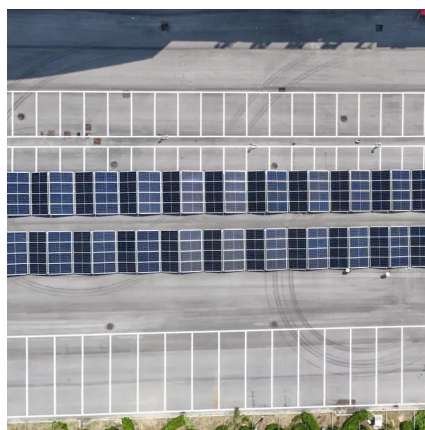
[Request Quote](#)



Wind Energy , Department of Energy

Wind power is the nation's largest source of renewable energy, with more than 150 gigawatts of wind energy installed across 42 ...

[Request Quote](#)



Wind Energy Factsheet

Among universities, University of California, University of Iowa, and Arizona State led green power use, with University of Iowa obtaining 84% of ...

[Request Quote](#)

Wind Energy , Department of Energy



Wind power is the nation's largest source of renewable energy, with more than 150 gigawatts of wind energy installed across 42 U.S. States and Puerto Rico. These projects ...

[Request Quote](#)



Load Ranges of Power Plants

Renewable energy systems such as solar and wind power are best suited for medium-load power plants. These are intermittent energy ...

[Request Quote](#)

Wind Energy Factsheet

Among universities, University of California, University of Iowa, and Arizona State led green power use, with University of Iowa obtaining 84% of electricity from green sources in 2024.

[Request Quote](#)



WINDEXchange: Land-Based Wind Energy

Wind turbines positioned over water fall under offshore wind energy. The power land-based wind turbines generate can range from 100 kilowatts ...

[Request Quote](#)

Wind power



Wind power is the use of wind energy to generate useful work. Historically, wind power was used by sails, windmills and windpumps, but today it is mostly used to generate electricity. This ...

[Request Quote](#)



WINDEXchange: Land-Based Wind Energy

Wind turbines positioned over water fall under offshore wind energy. The power land-based wind turbines generate can range from 100 kilowatts (usually for distributed purposes) to as much ...

[Request Quote](#)

[New York Wind Energy Guide for Local Decision Makers: ...](#)

This Wind Energy Guide is meant to provide the reader with an introductory understanding of wind energy technologies and the considerations that affect wind power siting, permitting, and ...

[Request Quote](#)





Contact Us

For catalog requests, pricing, or partnerships, please visit:

<https://energyinnovationday.pl>

Phone: +48 22 335 1273

Email: info@energyinnovationday.pl

Scan the QR code to contact us via WhatsApp.

