



How many amperes of battery does BYD 093 inverter carry





Overview

1 B-Plus H 1.28A is applicable for Australian market. Inverter Firmware version: minimum required firmware version for PIKO is FW-B2.30. Inverter UI version: minimum required version is UI-B6.44. Battery-Box firmware version: minimum required firmware version for BCU is V3.012R.

1 B-Plus H 1.28A is applicable for Australian market. Inverter Firmware version: minimum required firmware version for PIKO is FW-B2.30. Inverter UI version: minimum required version is UI-B6.44. Battery-Box firmware version: minimum required firmware version for BCU is V3.012R.

The BYD battery box premium HVL consists of 4kWh battery modules and a battery control unit (BCU). The BYD home battery storage system is designed for daily cycle use that re-charges with electricity generated from PV solar panels or the utility grid. BYD manufacturers batteries for solar backup.

BYD Battery-Box Premium HVL: BMU \geq 3.16, BMS \geq 3.23. Inverter maximum power can't be reached with this combination. BYD Battery-Box Premium HVL: BMU \geq 3.16, BMS \geq 3.23. Inverter maximum power can't be reached with this combination. BYD Battery-Box Premium HVL: BMU \geq 3.16, BMS \geq 3.23. Inverter.

Minimum Configuration: The BYD Battery-Box 13.8 is compatible with various models of SMA Sunny Island inverters, such as SI 3.0M, SI 4.4M, SI 6.0H, and SI 8.0H. For single-phase grid applications, at least one unit of each inverter model is required. For three-phase grid applications.

Inverter Firmware version: minimum required firmware version for SBS 2.5 is V2.4.23R. Battery-Box firmware version: minimum required firmware version for BCU is V3.004R. 3.8-US / 5.0-US / 6.0-US is 1.00.20R. Battery-Box firmware version: minimum required firmware version for BCU is V3.012R. 1.

Both Solis and GoodWe offer inverters that integrate seamlessly with the BYD Battery-Box, making them reliable choices for a wide range of applications. For residential energy storage systems, the BYD Battery-Box Premium LVS series is compatible with the GoodWe ES-20 and SBP-20 series, as well as.

Cannot retrieve latest commit at this time. Try to reverse a BYD battery system.



Contribute to burra/byd_battery development by creating an account on [GitHub](#).



How many amperes of battery does BYD 093 inverter carry



[BYD battery for hybrid solar inverters: SMA Sunny Boy Smart](#)

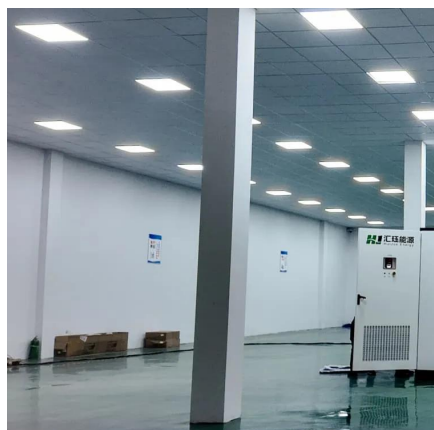
BYD manufacturers batteries for solar backup system using Lithium Iron Phosphate chemistry that is both safe and long-lasting. BYD batteries deliver power when you need it with 90% Depth of ...

[Request Quote](#)

8 of 20

The Solis Energy Storage inverter communicates with the BYD B-Box HV battery using CAN L and CAN H The recommended wire size for communication between the battery ...

[Request Quote](#)



[Which Inverters Are Compatible with the BYD Battery-Box?](#)

These inverters deliver solid performance and efficient solar energy storage, helping maximize self-consumption and reduce grid dependence. For the BYD Battery-Box Premium HVS & ...

[Request Quote](#)

byd_battery/manuals/BYD_Battery-Box_Premium_HVS&HVM_Compatible_Inverter

Try to reverse a BYD battery system. Contribute to burra/byd_battery development by creating an account on GitHub.



[Request Quote](#)



[BYD Battery-Box HV Compatible Inverter List](#)

1 B-Plus H 1.28A is applicable for Australian market. Inverter Firmware version: minimum required firmware version for PIKO is FW-B2.30. Inverter UI version: minimum required version is UI ...

[Request Quote](#)



Best Inverter for BYD Lithium Battery , Full Compatibility Guide

Discover which inverter works best with the BYD Lithium Battery. Is video mein BYD battery ki perfect compatibility, performance, aur recommended inverters jai

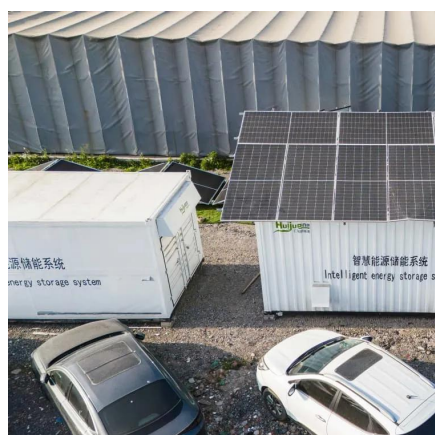
[Request Quote](#)



[A Comprehensive Guide to BYD Battery Models ...](#)

In this guide, we'll take a closer look at the features of BYD's HV and LV battery models and their compatibility with some of the leading ...

[Request Quote](#)



BYD Brazil solar inverters



BYD photovoltaic inverter range: on-grid, hybrid and pro models up to 250 kW, with IP66 protection, remote monitoring and national warranty.

[Request Quote](#)



8 of 20

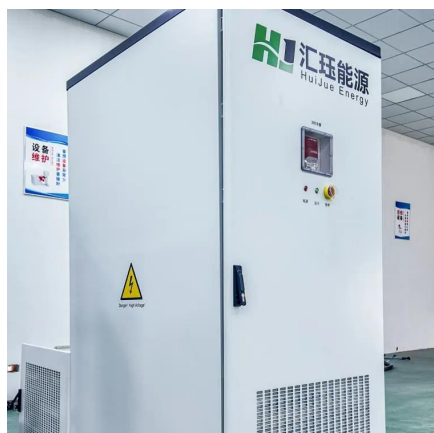
The Solis Energy Storage inverter communicates with the BYD B-Box HV battery using CAN L and CAN H The recommended wire ...

[Request Quote](#)

A Comprehensive Guide to BYD Battery Models and Inverter ...

In this guide, we'll take a closer look at the features of BYD's HV and LV battery models and their compatibility with some of the leading inverter brands in the UK, including ...

[Request Quote](#)



[BYD Inverter User Manuals Download, ManualsLib](#)

Download 7 BYD Inverter PDF manuals. User manuals, BYD Inverter Operating guides and Service manuals.

[Request Quote](#)

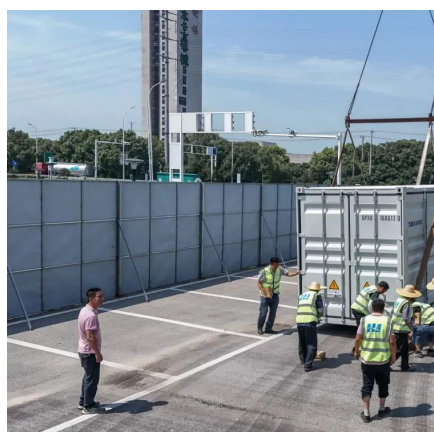
[BYD BATTERY-BOX PREMIUM HVL](#)



COMPATIBLE ...

Installation before official release is not allowed.
Always install the latest firmware on the Battery-Box!

[Request Quote](#)



byd_battery/manuals/BYD_Battery ...

Try to reverse a BYD battery system. Contribute to burra/byd_battery development by creating an account on GitHub.

[Request Quote](#)



Contact Us

For catalog requests, pricing, or partnerships, please visit:

<https://energyinnovationday.pl>

Phone: +48 22 335 1273

Email: info@energyinnovationday.pl

Scan the QR code to contact us via WhatsApp.

