



How do base stations and gateways communicate





Overview

In the area of wireless computer networking, a base station is a radio receiver/transmitter that serves as the hub of the local wireless network, and may also be the gateway between a wired network and the wireless network. It typically consists of a low-power transmitter and .

These structures facilitate the transmission and reception of signals between mobile devices and the wider network, enabling voice calls, text messages, and data services.

These structures facilitate the transmission and reception of signals between mobile devices and the wider network, enabling voice calls, text messages, and data services.

The present-day tele-space is incomplete without the base stations as these constitute an important part of the modern-day scheme of wireless communications. They are referred to as cell towers or cellular antennas. These types of objects are an inevitability since they serve the purpose of.

A base station is called node B in 3G, eNB in LTE (4G), and gNB in 5G. The term is used in the context of mobile telephony, wireless computer networking and other wireless communications and in land surveying. In surveying, it is a GPS receiver at a known position, while in wireless communications.

A base station is a critical component in a telecommunications network. A fixed transceiver that acts as the central communication hub for one or more wireless mobile client devices. In the context of cellular networks, it facilitates wireless communication between mobile devices and the core.

A base station is a fixed communication infrastructure that connects mobile devices (such as smartphones, tablets, or IoT devices) to a network, enabling wireless communication. It acts as the intermediary between the mobile device and the broader telecommunications network, facilitating both data.

A base station is a critical component of wireless communication networks. It serves as the central point of a network that connects various devices, such as smartphones, tablets, and computers. The base station transmits and receives signals, ensuring seamless communication over radio frequencies.



Base stations are the foundational elements that make this connectivity possible, acting as fixed points that bridge the gap between a mobile device's radio signal and the global wired network. They are communication hubs in a cellular network that ensure continuous service as users move throughout.



How do base stations and gateways communicate



Understanding Base Stations: The Backbone of Wireless Communication

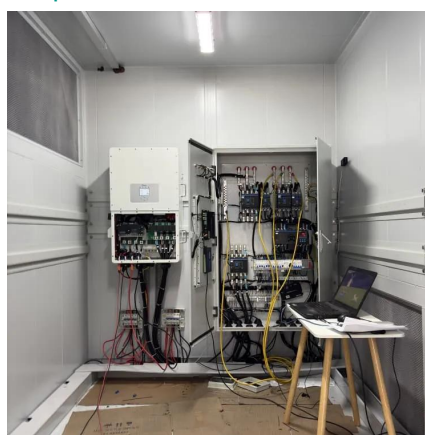
A base station is a fixed communication infrastructure that connects mobile devices (such as smartphones, tablets, or IoT devices) to a network, enabling wireless communication.

[Request Quote](#)

Base Stations

Base stations form a key part of modern wireless communication networks because they offer some crucial advantages, such as wide coverage, continuous communications and ...

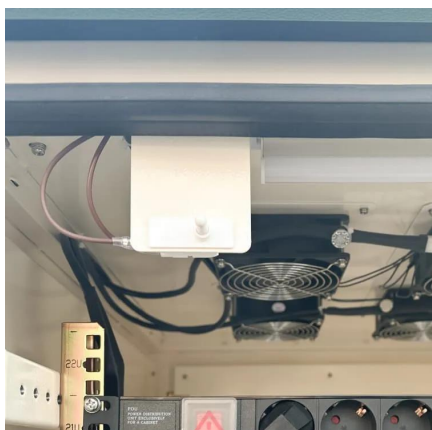
[Request Quote](#)



[What is a Base Station in Telecommunications?](#)

Network Coverage: Base stations are strategically placed to provide extensive coverage in a specified area. Each station covers a geographical area known as a cell, and together, they ...

[Request Quote](#)



[What are Base Station in Telecommunications?](#)

Base stations contain several key parts. The antenna sends and receives radio energy. The transceiver handles signal modulation. The baseband processor converts signals to digital ...



[Request Quote](#)



[What is a Base Station in Telecommunications?](#)

Network Coverage: Base stations are strategically placed to provide extensive coverage in a specified area. Each station covers a ...

[Request Quote](#)

[What Is a Base Station? Definition and How It Works](#)

Define the central communication hubs of modern wireless technology. Learn how base stations manage capacity and ensure reliable connections.

[Request Quote](#)



[Understanding Base Stations in Mobile Communication](#)

In summary, base stations play a multifaceted role in mobile communication by ensuring effective signal transmission and reception, executing seamless handoff procedures, and maintaining ...

[Request Quote](#)

[Understanding Base Stations: The](#)



[Backbone of Wireless ...](#)

A base station is a fixed communication infrastructure that connects mobile devices (such as smartphones, tablets, or IoT devices) to a network, enabling wireless communication.

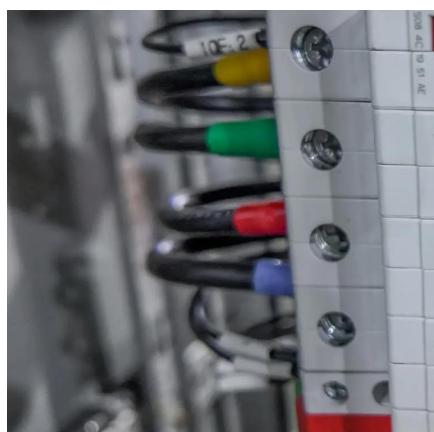
[Request Quote](#)



[Base Station's Role in Wireless Communication Networks](#)

How does a base station work? A base station receives signals from mobile devices within its coverage area, and forwards these signals to the network's central ...

[Request Quote](#)



[Understanding Base Stations in Mobile ...](#)

In summary, base stations play a multifaceted role in mobile communication by ensuring effective signal transmission and reception, executing ...

[Request Quote](#)



Base station

In the area of wireless computer networking, a base station is a radio receiver/transmitter that serves as the hub of the local wireless network, and may also be the gateway between a wired ...

[Request Quote](#)



Base station



OverviewComputer networkingLand surveyingWireless communicationsSee also

In the area of wireless computer networking, a base station is a radio receiver/transmitter that serves as the hub of the local wireless network, and may also be the gateway between a wired network and the wireless network. It typically consists of a low-power transmitter and wireless router.

[Request Quote](#)



Base Stations and Cell Towers: The Pillars of Mobile Connectivity

Base stations use antennas mounted on cell towers to send and receive radio signals to and from mobile devices within their coverage area. This communication enables ...

[Request Quote](#)

What Is the Role of a Base Station in Wireless Communication?

Base stations are critical components in wireless communication networks, serving as the intermediary between mobile devices and the core network. They play a vital role in ...

[Request Quote](#)



Base Station's Role in Wireless Communication Networks

How does a base station work? A base station receives signals from mobile devices within its coverage area, and forwards these signals to the network's central system. It converts the ...

[Request Quote](#)



Contact Us

For catalog requests, pricing, or partnerships, please visit:

<https://energyinnovationday.pl>

Phone: +48 22 335 1273

Email: info@energyinnovationday.pl

Scan the QR code to contact us via WhatsApp.

