



How big a battery is usually used with an inverter





How big a battery is usually used with an inverter



[Calculate Battery Size For Any Size Inverter \(Using ...](#)

So I have made it easy for you, use the calculator below to calculate the battery size for 200 watt, 300 watt, 500 watt, 1000 watt, ...

[Request Quote](#)

[How to Calculate the Right Battery Size for Your ...](#)

To help you find the perfect match, here's a step-by-step guide to calculate battery size based on your power needs and inverter specifications. 1.1.

...

[Request Quote](#)



[How to Right-Size Your Battery Storage System](#)

Proper battery sizing depends on several factors: how much electricity is needed to keep devices powered, how long those devices will rely on ...

[Request Quote](#)



Calculate Battery Size For Any Size Inverter (Using Our Calculator)

So I have made it easy for you, use the calculator below to calculate the battery size for 200 watt, 300 watt, 500 watt, 1000 watt, 2000 watt, 3000 watt, 5000-watt inverter



[Request Quote](#)



How to Calculate the Right Inverter Battery Capacity for Your Needs

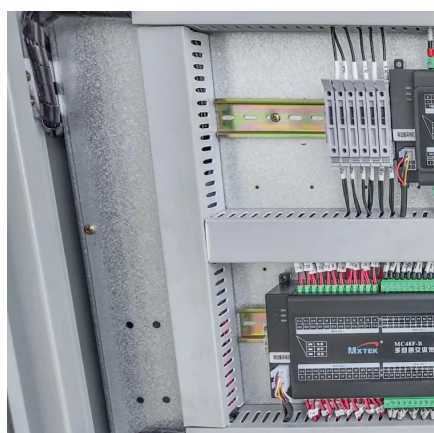
Learn how to calculate the right inverter battery capacity for your needs with a simple formula. Understand power requirements, efficiency losses, and the best battery types ...

[Request Quote](#)

How to Right-Size Your Battery Storage System

Proper battery sizing depends on several factors: how much electricity is needed to keep devices powered, how long those devices will rely on stored energy, and the actual capacity of each ...

[Request Quote](#)



Can an Inverter Be Too Big for Your Battery System?

A 48V 100Ah lithium battery (4.8kWh) paired with a 5000W inverter works because $48V \times 100Ah \times 1C = 4800W$. Always account for inverter efficiency losses (typically 85-95%).

[Request Quote](#)

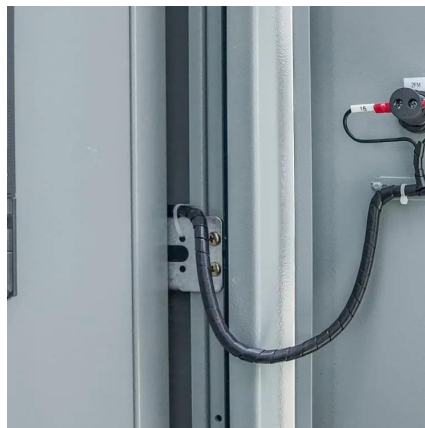
Calculate Battery Size for Inverter



[Calculator](#)

Battery size is primarily influenced by power consumption, usage duration, and inverter efficiency. Accurate inputs for these ...

[Request Quote](#)



[Solar Battery Size Guide: kWh, Inverter & Runtime](#)

This guide shows how to pick the right solar battery size for a modern home battery system, match power (kW) with an inverter, and estimate runtime--without guesswork.

[Request Quote](#)

Calculate the Ideal Battery Size for Your Inverter with our Battery ...

Choosing the right size of battery and inverter is crucial when it comes to powering your devices efficiently. Whether you are planning an off-grid system or looking for a backup ...

[Request Quote](#)



[1000W Inverter: How Many Batteries Do You Really Need?](#)

To safely run a 1000W inverter on a 12-volt system, you'll need four 12V 100Ah lead-acid batteries connected in parallel.

[Request Quote](#)



How to Calculate the Right Battery



Size for Your Inverter System

To help you find the perfect match, here's a step-by-step guide to calculate battery size based on your power needs and inverter specifications. 1.1. Calculate Your Daily Power Consumption. ...

[Request Quote](#)



How to Size and Pair a Battery with Your Inverter in 2025: ...

Learn how to size and pair a battery with your solar inverter in 2025. Discover key ratios, examples, and Growatt solutions for optimal solar + storage system design.

[Request Quote](#)

Calculate Battery Size for Inverter Calculator

Battery size is primarily influenced by power consumption, usage duration, and inverter efficiency. Accurate inputs for these variables are essential for reliable recommendations.

[Request Quote](#)



Solar Battery Size Guide: kWh, Inverter & Runtime

This guide shows how to pick the right solar battery size for a modern home battery system, match power (kW) with an inverter, and ...

[Request Quote](#)



Contact Us

For catalog requests, pricing, or partnerships, please visit:

<https://energyinnovationday.pl>

Phone: +48 22 335 1273

Email: info@energyinnovationday.pl

Scan the QR code to contact us via WhatsApp.

