



How big a battery can a 35v270 solar panel charge





Overview

A 100-watt solar panel can charge a 12V 35Ah battery in 4-6 hours, depending on sunlight intensity. For faster charging, use a 140-watt panel combined with an MPPT controller. Always check the battery type and usage to maximize system efficiency and ensure optimal energy capacity.

A 100-watt solar panel can charge a 12V 35Ah battery in 4-6 hours, depending on sunlight intensity. For faster charging, use a 140-watt panel combined with an MPPT controller. Always check the battery type and usage to maximize system efficiency and ensure optimal energy capacity.

A Solar Battery Bank Size Calculator helps you determine the ideal battery size based on your energy consumption and storage needs. Whether you're a homeowner seeking to maximize energy independence or a business aiming to cut energy costs, this calculator provides the insights needed to make.

Use our solar panel size calculator to find out what size solar panel you need to charge your battery in desired time. Simply enter the battery specifications, including Ah, volts, and battery type. Also the charge controller type and desired charge time in peak sun hours into our calculator to get.

A solar battery calculator helps you calculate the battery backup hours based on your battery's power consumption, voltage, and efficiency. For example, if you are using a lead-acid battery, it might have an efficiency factor of 0.5, whereas a lithium battery might have a 0.8 efficiency factor.

Calculate the perfect battery capacity for your solar system, inverter, or car with accurate battery size calculator For your 5kWh daily usage and 8 hours backup, you need a 180.5Ah 12V Lithium-ion battery. We recommend a 200Ah commercial size. Solar battery storage systems allow you to store.

How to Calculate Battery Capacity for a Solar System?

To calculate battery capacity for a solar system, divide your total daily watt-hours by depth of discharge and system voltage to get amp-hours needed. Battery capacity depends on your daily power use, backup goals, and system voltage. Use the.



Whether you're looking to set up a reliable off-grid system or just want a battery that can back you up when the grid goes down, LFP batteries offer a safer, more efficient option that's really catching on. To figure out how long it takes to charge a solar battery, you start by knowing its capacity. [What size solar battery do I Need?](#)

Calculate the perfect battery capacity for your solar system, inverter, or car with accurate battery size calculator For your 5kWh daily usage and 8 hours backup, you need a 180.5Ah 12V Lithium-ion battery. We recommend a 200Ah commercial size. Solar battery storage systems allow you to store excess solar energy for use when the sun isn't shining.

[Can a 120W solar panel charge a 35ah battery?](#)

A 35ah battery may have a capacity of 420 watts, but due to the depth of discharge (DO) in lead acid batteries, it can only be charged with 210 watts at a time. All lead acid batteries (FLA, AGM, gel) cannot be used to their full capacity, and must be recharged when the capacity drops to 50%. If you use a 120W solar panel, the charge time will be a bit faster.

[What is a solar battery bank size calculator?](#)

A Solar Battery Bank Size Calculator helps you determine the ideal battery size based on your energy consumption and storage needs. Whether you're a homeowner seeking to maximize energy independence or a business aiming to cut energy costs, this calculator provides the insights needed to make informed decisions.

[How many watts a solar panel to charge a 24v battery?](#)

You need around 600-900 watts of solar panels to charge most of the 24V lithium (LiFePO4) batteries from 100% depth of discharge in 6 peak sun hours with an MPPT charge controller. Full article: [What Size Solar Panel To Charge 24v Battery?](#)

[What Size Solar Panel To Charge 48V Battery?](#)



How big a battery can a 35v270 solar panel charge



[Solar Battery Size Guide: kWh, Inverter & Runtime](#)

How Many kWh Of Solar Battery Do I Need For My Home? 1. Start With Your Load Profile. 2. Critical Vs Full-Home. 3. From Loads To ...

[Request Quote](#)

Solar Battery Bank Size Calculator

Battery Capacity = $(5 \times 3) / (48 \times 0.5) = 62.5 \text{ Ah}$.
Alternative formulas may adjust for temperature variations or system inefficiencies, but the core principle remains consistent. ...

[Request Quote](#)



[Best Battery Size Calculator For Solar And Off-Grid Systems](#)

For your 5kWh daily usage and 8 hours backup, you need a 180.5Ah 12V Lithium-ion battery. We recommend a 200Ah commercial size. Solar battery storage systems allow you to store ...

[Request Quote](#)



[Solar Battery Size Calculator - self2solar](#)

Calculate your ideal solar battery size: input daily kWh, backup days, & battery DoD to determine the capacity needed for your system.

[Request Quote](#)



[How to Calculate Battery Capacity for Solar ...](#)

Choosing the right battery capacity for your solar setup isn't guesswork--it's about knowing your solar energy needs. If you go too ...

[Request Quote](#)

[Solar Battery Size Calculator - self2solar](#)

Calculate your ideal solar battery size: input daily kWh, backup days, & battery DoD to determine the capacity needed for your ...

[Request Quote](#)



[What Solar Panel Size to Charge a 35ah Battery?](#)

At the top we said that two 250W solar panels can recharge the battery in an hour. However there are several factors that might result in a longer charge time. A 100W solar panel can recharge ...

[Request Quote](#)

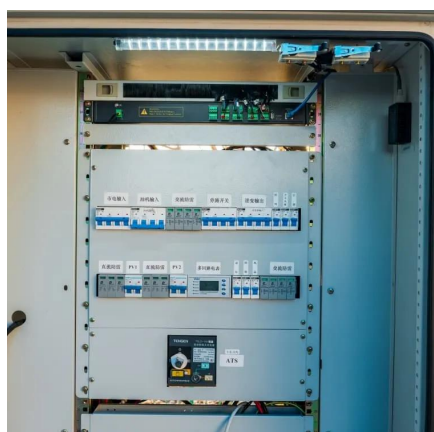
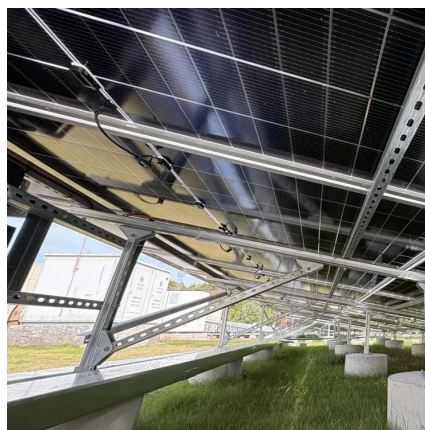


Solar Battery Bank Size Calculator



Battery Capacity = $(5 \times 3) / (48 \times 0.5) = 62.5 \text{ Ah}$.
Alternative formulas may adjust for temperature variations or system inefficiencies, ...

[Request Quote](#)



[How to Calculate Battery Capacity for Solar System](#)

Choosing the right battery capacity for your solar setup isn't guesswork--it's about knowing your solar energy needs. If you go too small, you'll run out of power fast. Too big, and ...

[Request Quote](#)

Solar Panel Size Calculator - Charge Your Battery In Desired Hours

Use our solar panel size calculator to find out the ideal solar panel size to charge your lead acid or lithium battery of any capacity and voltage. For example, 50ah, 100ah, ...

[Request Quote](#)



[Solar Battery Calculator: How to Size Your Solar Panels, ...](#)

Learn how a solar battery calculator determines the battery capacity and the number of solar panels. Also, discover a well-sized system to maximize benefits.

[Request Quote](#)

Solar Panel Size Calculator - Charge



Your Battery In Desired Hours

Solar Panel Size Calculator
How to Use Our Solar Panel Size Calculator?
6 Steps to Calculate The Perfect Solar Panel Size For Battery
What Size Solar Panel to Charge 12V Battery?
What Size Solar Panel to Charge 24V Battery?
What Size Solar Panel to Charge 48V Battery?
What Size Solar Panel to Charge 120ah Battery?
What Size Solar Panel to Charge 100ah Battery?
What Size Solar Panel to Charge 50ah Battery?
What Size Solar Panel to Charge 20ah Battery?
Here's a chart about what size solar panel you need to charge your 12v 120ah lead-acid (50% depth of discharge) and lithium battery (100% depth of discharge) with different peak sun hours and using an MPPT charge controller. See more on dotwatts



Videos of How Big a Battery Can a 35V270 Solar Panel Charge

Watch video 9:29 Sizing Battery Capacity For Your Solar Power System - The Basics (Ep. 4) The Solar Lab 15.5K views May 7, 2024
Watch video 7:16 How Many Solar Panels to Charge a Battery? Cleversolarpower by Nick 206.7K views Jun 26, 2024
Watch video 10:09 How to Connect Two Solar Panels to One Battery Cleversolarpower by Nick 123.9K views Dec 23, 2023
Watch full video See more Jackery

Solar Battery Calculator: How to Size Your Solar Panels, ...

Learn how a solar battery calculator determines the battery capacity and the number of solar panels. Also, discover a well-sized system to maximize benefits.

[Request Quote](#)



Choosing and Sizing Batteries, Charge Controllers and Inverters ...

To determine the inverter size we must find the peak load or maximum wattage of your home. This is found by adding up the wattage of the appliances and devices that could be run at the ...

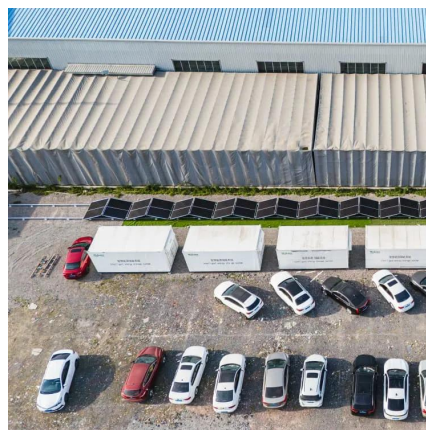
[Request Quote](#)



[Solar Battery Size Guide: kWh, Inverter & Runtime](#)

How Many kWh Of Solar Battery Do I Need For My Home? 1. Start With Your Load Profile. 2. Critical Vs Full-Home. 3. From Loads To Solar Battery Size. 4. What Self ...

[Request Quote](#)



[What Size Solar Panel to Charge a 35Ah Battery: Watts, ...](#)

A 100-watt solar panel can charge a 12V 35Ah battery in 4-6 hours, depending on sunlight intensity. For faster charging, use a 140-watt panel combined with an MPPT ...

[Request Quote](#)



Contact Us

For catalog requests, pricing, or partnerships, please visit:

<https://energyinnovationday.pl>

Phone: +48 22 335 1273

Email: info@energyinnovationday.pl

Scan the QR code to contact us via WhatsApp.

