



Glass size of solar 166 modules





Overview

Cell sizes: 156.75 mm (M2) / 158.75 mm (G1) / 166 mm (M6) / 182 mm (M10) / 210 mm (G12) Cell geometries: Full-square, Half-cut, Triple-cut, Custom Typical power (Full Black)*: 184-232 Wp / m² Typical power (colour)*: 150 - 200 Wp / m² Encapsulation material: EVA or PVB.

Cell sizes: 156.75 mm (M2) / 158.75 mm (G1) / 166 mm (M6) / 182 mm (M10) / 210 mm (G12) Cell geometries: Full-square, Half-cut, Triple-cut, Custom Typical power (Full Black)*: 184-232 Wp / m² Typical power (colour)*: 150 - 200 Wp / m² Encapsulation material: EVA or PVB.

All Dimensions in mm The above drawing is a graphical representation of the product. For engineering quality drawings please contact SUNKET.

Solar Innova uses the latest materials to manufacture photovoltaic modules. Our modules are ideal for any application that uses the photoelectric effect as a clean energy source because of its minimal chemical pollution and no noise pollution. The front of the module contains a tempered solar glass.

Half cut cell technology can reduce the internal power loss and improve component overall power. Excellent heat dissipation avoids hot spot production. All the modules are sorted and packaged by amperage, reducing mismatch losses and maximizing system output. microcrack resistant high performance.

TUNGHSU 166 series Mono solar modules TUNGHSU 144 cells double-glass multi-busbar half-cut modules 430-450W Tunghsu components with high efficiency and high reliability * Advanced production equipment,highly automated process control, world—class production technology * The company has a product.

Glass-glass solar modules can be installed both with or without frames. The mounting systems FAST, MATCH, LEVEL, NICER, LOCKUP, LOCKIN, LAYUP and LAYIN are especially suitable for the integration of glass-glass solar modules. Particularly low-glare surface structures are used. Megasol Cell.

The series integrates 166mm silicon wafers with PERC, half-cell technologies. Our 9BB design improves current collection capability. The power of half-cell module increases, and the hot spot risk reduces because of lower working current. Gallium-



doped technology overcomes LID degradation and.



Glass size of solar 166 modules



[5.166mm 430W-460W 144cells Dual-glass bifacial mono ...](#)

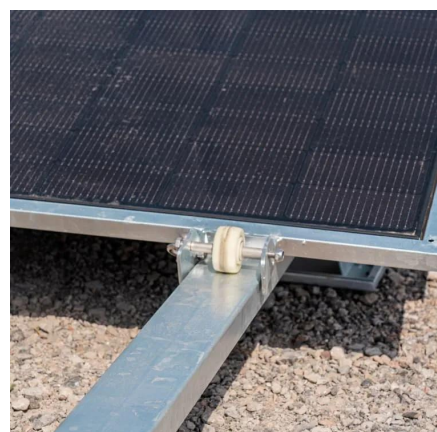
All Dimensions in mm The above drawing is a graphical representation of the product. For engineering quality drawings please contact SUNKET.

[Request Quote](#)

166-60 cells

The rear of the module contains a tempered solar glass with low iron content. The junction boxes with IP67, are made from high temperature resistant plastics and containing terminals, ...

[Request Quote](#)



166 Single Glass Module Series

166 Single Glass Module Series The series integrates 166mm silicon wafers with PERC, half-cell technologies. Our 9BB design improves current ...

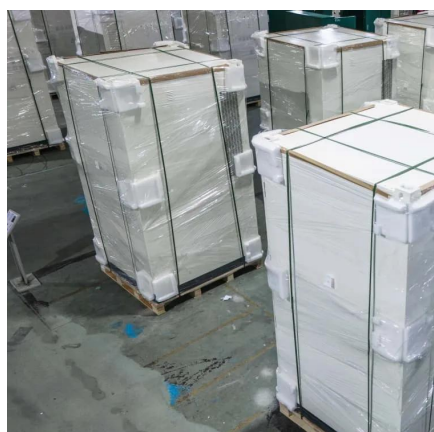
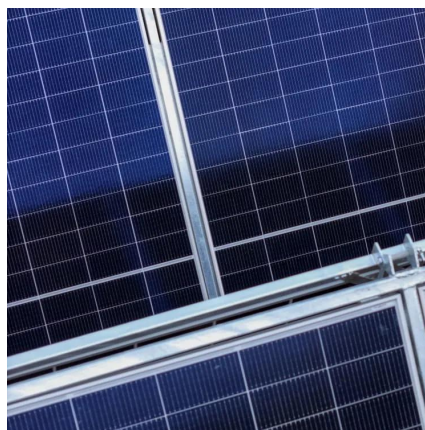
[Request Quote](#)

[Saturn - 166 MODULE WITH DUAL GLASS RS3-445~465MG ...](#)

Advanced module technology delivers superior module efficiency Gallium-doped Wafer·Non destructive cutting ·MBB half-cut Excellent power generation performance Excellent IAM and ...



[Request Quote](#)



MULTIWAY+

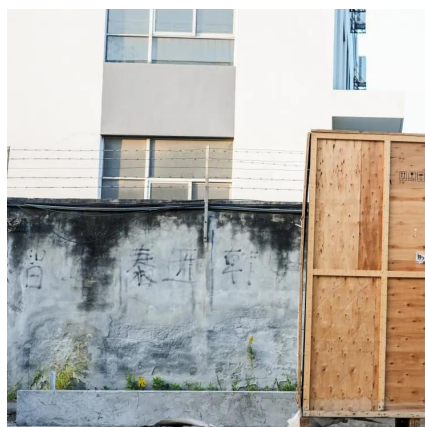
Half cut cell technology can reduce the internal power loss and improve component overall power. Excellent heat dissipation avoids hot spot production. All the modules are sorted and ...

[Request Quote](#)

ENF Solar

TUNGHSU 166 series Mono solar modules
TUNGHSU 144 cells double-glass multi-busbar half-cut modules 430-450W Tunghsu components with high efficiency and high reliability * ...

[Request Quote](#)



[Longi Solar 166mm Double Glass Solar Modules 445W 450W ...](#)

Solar has been deeply diving into the photovoltaic industry for nearly 10 years and has its own independent and complete automated production workshop.

[Request Quote](#)



Photovoltaic 166 Panels: The Solar



Workhorse You Didn't Know ...

As solar manufacturers play musical chairs with wafer sizes (182mm! 210mm!), the photovoltaic 166 panels remain the Goldilocks choice - not too big, not too small, just right for most ...

[Request Quote](#)



Glass-glass solar modules

Discover durable glass-glass solar modules with a service life of over 50 years, high efficiency and versatile application options.

[Request Quote](#)

Saturn - 166 MODULE WITH DUAL GLASS RS3-445~465MG-E2 - Solar ...

Advanced module technology delivers superior module efficiency Gallium-doped Wafer·Non destructive cutting ·MBB half-cut Excellent power generation performance Excellent IAM and ...

[Request Quote](#)



166 Single Glass Module Series

166 Single Glass Module Series The series integrates 166mm silicon wafers with PERC, half-cell technologies. Our 9BB design improves current collection capability. The power of half-cell ...

[Request Quote](#)

[166 Single Glass Module Series - BH Solar](#)



[PVT Limited](#)

The power of half-cell module increases, and the hot spot risk reduces because of lower working current. Gallium-doped technology overcomes LID degradation and guarantees the long-term ...

[Request Quote](#)





Contact Us

For catalog requests, pricing, or partnerships, please visit:

<https://energyinnovationday.pl>

Phone: +48 22 335 1273

Email: info@energyinnovationday.pl

Scan the QR code to contact us via WhatsApp.

