



General 5G base station power consumption





Overview

Can 3GPP reduce base station energy consumption in 5G NR BS?

Aiming at minimizing the base station (BS) energy consumption under low and medium load scenarios, the 3GPP recently completed a Release 18 study on energy saving techniques for 5G NR BSs . A broad range of techniques was evaluated in terms of the obtained network energy saving (NES) gain and their impact to the user-perceived throughput (UPT).

Should power consumption models be used in 5G networks?

This restricts the potential use of the power models, as their validity and accuracy remain unclear. Future work includes the further development of the power consumption models to form a unified evaluation framework that enables the quantification and optimization of energy consumption and energy efficiency of 5G networks.

How can we improve the energy efficiency of 5G networks?

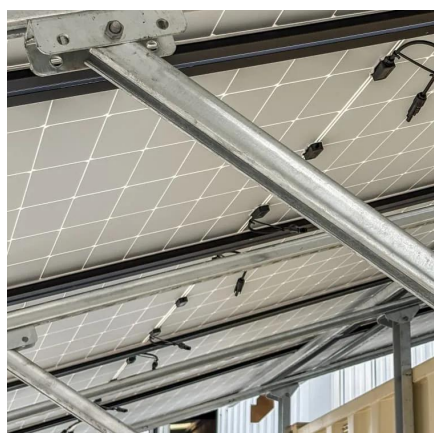
To improve the energy efficiency of 5G networks, it is imperative to develop sophisticated models that accurately reflect the influence of base station (BS) attributes and operational conditions on energy usage.

What should be considered in a 5G network?

The further completion of the map of power models (Fig. 2) and systematization of their features as well as the comparison is also part of the future work. Lastly, the aspects of computing (network function virtualization) and functional split options of the RAN need to be considered for 5G networks as well.



General 5G base station power consumption



[Power consumption based on 5G communication](#)

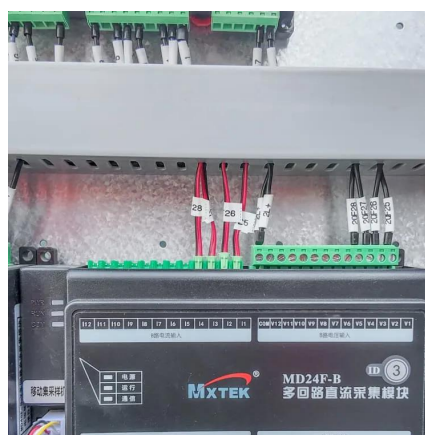
At present, 5G mobile traffic base stations in energy consumption accounted for 60% ~ 80%, compared with 4G energy consumption increased three times. In the future, high-density ...

[Request Quote](#)

[Why does 5g base station consume so much ...](#)

In addition to other small modules that use electricity, the power consumption of a single 5G base station is generally around 3700 watts, ...

[Request Quote](#)



[Power Consumption Modeling of 5G Multi-Carrier Base ...](#)

Importantly, this study item indicates that new 5G power consumption models are needed to accurately develop and optimize new energy saving solutions, while also considering the ...

[Request Quote](#)



Comparison of Power Consumption Models for 5G Cellular Network Base

Power consumption models for base stations are briefly discussed as part of the development of a model for life cycle assessment. An overview of relevant base station power ...



[Request Quote](#)



A Power Consumption Model and Energy Saving Techniques for ...

Aiming at minimizing the base station (BS) energy consumption under low and medium load scenarios, the 3GPP recently completed a Release 18 study on energy savi

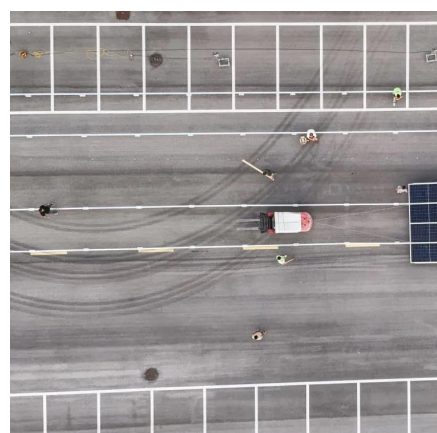
[Request Quote](#)



A Power Consumption Model and Energy Saving Techniques for 5G ...

Aiming at minimizing the base station (BS) energy consumption under low and medium load scenarios, the 3GPP recently completed a Release 18 study on energy savi

[Request Quote](#)



[A technical look at 5G energy consumption and performance](#)

To understand this, we need to look closer at the base station power consumption characteristics (Figure 3). The model shows that there is significant energy consumption in the ...

[Request Quote](#)

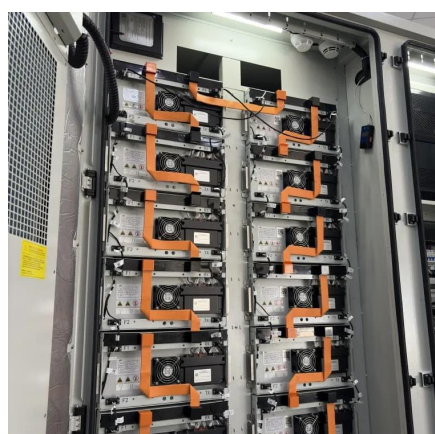
[Modelling the 5G Energy Consumption](#)



[using Real-world ...](#)

To address this, we propose a novel deep learning model for 5G base station energy consumption estimation based on a real-world dataset. Unlike existing methods, our approach integrates ...

[Request Quote](#)



[How Much Power Does 5G Base Station Consume?](#)

The average 5G base station consumes 2.5-4 kW daily - equivalent to powering 40 refrigerators simultaneously. Three factors amplify this: Operators now spend 20-40% of ...

[Request Quote](#)

[A technical look at 5G energy consumption and performance](#)

Base Station Power Consumption
Energy Saving Features of 5G New Radio
How Much Energy Can We Save with Nr Sleep Modes?
Impact on Energy Efficiency and Performance in A Super Dense Urban Scenario
Further Reading
Today we see that a major part of energy consumption in mobile networks comes from the radio base station sites and that the consumption is stable. We can also see that even in densely deployed networks, as in city centers, the network traffic load can fluctuate very much during the day, with significant periods of almost no traffic in the base sta See more on ericsson IEEE Xplore

Power consumption based on 5G communication - IEEE Xplore

At present, 5G mobile traffic base stations in energy consumption accounted for 60% ~ 80%, compared with 4G energy consumption increased three times. In the future, high-density ...





[Request Quote](#)



[Comparison of Power Consumption Models for 5G Cellular ...](#)

Power consumption models for base stations are briefly discussed as part of the development of a model for life cycle assessment. An overview of relevant base station power ...

[Request Quote](#)

Why does 5g base station consume so much power and how to ...

In addition to other small modules that use electricity, the power consumption of a single 5G base station is generally around 3700 watts, which is about three times that of 4G ...

[Request Quote](#)



What is 5G Energy Consumption?

With 5G projected to increase capacity up to approximately 1000-fold and high frequency millimeter wave (mmWave) transmission driving exponentially higher cell density, this ...

[Request Quote](#)

Optimal energy-saving operation strategy of 5G base station with

To further explore the energy-saving potential of 5G base stations, this paper proposes an energy-saving operation model for 5G base stations that incorporates ...

[Request Quote](#)





Contact Us

For catalog requests, pricing, or partnerships, please visit:

<https://energyinnovationday.pl>

Phone: +48 22 335 1273

Email: info@energyinnovationday.pl

Scan the QR code to contact us via WhatsApp.

