



# Flywheel energy storage kwh





## Overview

---

Flywheel energy storage systems can store significant amounts of energy, ranging from a few kilowatt-hours to a few megawatt-hours. The actual capacity, however, is contingent on several factors including flywheel design, material composition, rotational speed, and size.

Flywheel energy storage systems can store significant amounts of energy, ranging from a few kilowatt-hours to a few megawatt-hours. The actual capacity, however, is contingent on several factors including flywheel design, material composition, rotational speed, and size.

Flywheel energy storage (FES) works by spinning a rotor (flywheel) and maintaining the energy in the system as rotational energy. When energy is extracted from the system, the flywheel's rotational speed is reduced as a consequence of the principle of conservation of energy; adding energy to the.

Flywheels store kinetic energy (the energy of motion) in a rotating mass which historically were connected to a rotating machine such as a mill or steam engine. In contrast, modern flywheel systems employ a rotor spinning at high speed in an evacuated enclosure that is charged and discharged.

As global industries seek cost-effective energy storage, flywheel systems emerge as game-changers with flywheel energy storage cost per kWh dropping 28% since 2020. Unlike lithium-ion batteries requiring frequent replacements, a California data center using 10MW flywheel array achieved \$1,200/kWh.

These mechanical marvels convert electricity into rotational kinetic energy, spinning a mass at up to 50,000 RPM in near-frictionless environments. "A 10 kWh flywheel unit can deliver 500,000 full-depth cycles – about 10x more than top-tier lithium batteries." When the MTA needed to harness train.

No flammable electrolyte or gaseous hydrogen release. Flywheel – 40 years. Power conversion components on 10-year replacement cycle. £750k per 1 MW, 2 MWh system. Equipment installation up to low voltage connection point. switchgear, substation. Includes excavation for flywheel.

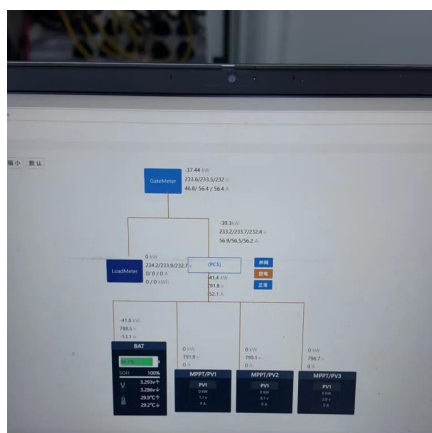
FESS is used for short-time storage and typically offered with a



charging/discharging duration between 20 seconds and 20 minutes. However, one 4-hour duration system is available on the market. FESS is typically positioned between ultracapacitor storage (high cycle life but also very high storage.



## Flywheel energy storage kwh



### 10 kWh Flywheel Energy Storage: The Overlooked Powerhouse ...

These mechanical marvels convert electricity into rotational kinetic energy, spinning a mass at up to 50,000 RPM in near-frictionless environments. "A 10 kWh flywheel unit can deliver 500,000 ...

[Request Quote](#)

### Flywheel energy storage

First-generation flywheel energy-storage systems use a large steel flywheel rotating on mechanical bearings. Newer systems use carbon-fiber composite rotors that have a higher ...

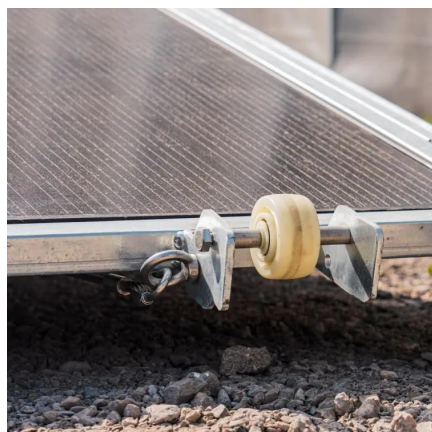
[Request Quote](#)



### Grid-Scale Flywheel Kinetic Energy Storage Systems

£750k per 1 MW, 2 MWh system. Equipment installation up to low voltage connection point. switchgear, substation. Includes excavation for flywheel.

[Request Quote](#)

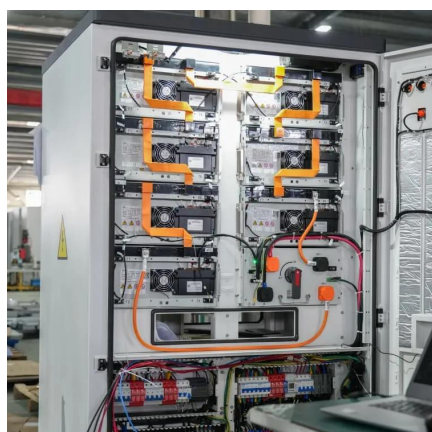
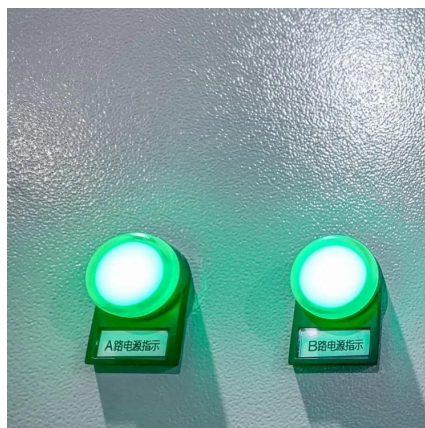


### Flywheel Energy Storage System Basics

Anything to do with energy storage attracts us, although a flywheel energy storage system is very different from a battery. Flywheels ...

[Request Quote](#)





## DOE ESHB Chapter 7 Flywheels

Flywheel systems in service today demonstrate millisecond response times, energy storage up to 700 kWh per rotor, power output of up to 500 MW per rotor, and decades of service life.

[Request Quote](#)

### [How much electricity can flywheel energy storage store](#)

Flywheel energy storage systems can store significant amounts of energy, ranging from a few kilowatt-hours to a few megawatt-hours. The actual capacity, however, is ...

[Request Quote](#)



## A review of flywheel energy storage systems: state of the art and

It has a theoretical tensile strength of 130 GPa and a density of 2.267 g/cm<sup>3</sup>, which can give the specific energy of over 15 kWh/kg, better than gasoline (13 kWh/kg) and Li-air ...

[Request Quote](#)

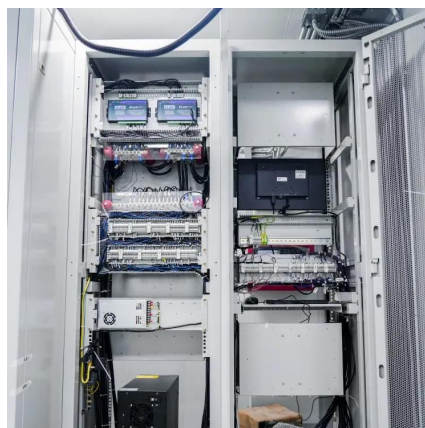


### [Flywheel Energy Storage System Basics](#)



Anything to do with energy storage attracts us, although a flywheel energy storage system is very different from a battery. Flywheels can store grid energy up to several tens of ...

[Request Quote](#)



### [Top 5 Advanced Flywheel Energy Storage Startups in 2025](#)

This energy storage system boasts a significantly lower Levelized Cost of Storage (LCOS), estimated at around 3.8 cents per kWh compared to 11 cents per kWh for lithium-ion batteries.

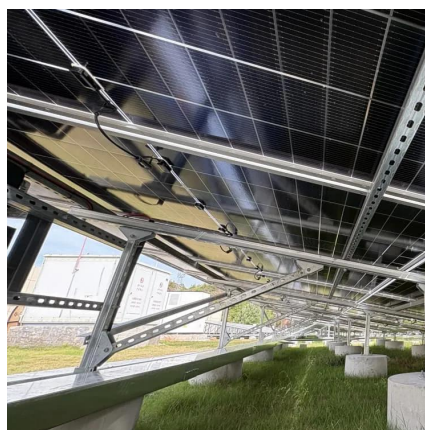
[Request Quote](#)



## Technology: Flywheel Energy Storage

Their main advantage is their immediate response, since the energy does not need to pass any power electronics. However, only a small percentage of the energy stored in them can be ...

[Request Quote](#)



### [Flywheel Energy Storage Cost per kWh: Efficiency Meets ...](#)

As global industries seek cost-effective energy storage, flywheel systems emerge as game-changers with flywheel energy storage cost per kWh dropping 28% since 2020.

[Request Quote](#)





## Contact Us

---

For catalog requests, pricing, or partnerships, please visit:

<https://energyinnovationday.pl>

Phone: +48 22 335 1273

Email: [info@energyinnovationday.pl](mailto:info@energyinnovationday.pl)

Scan the QR code to contact us via WhatsApp.

