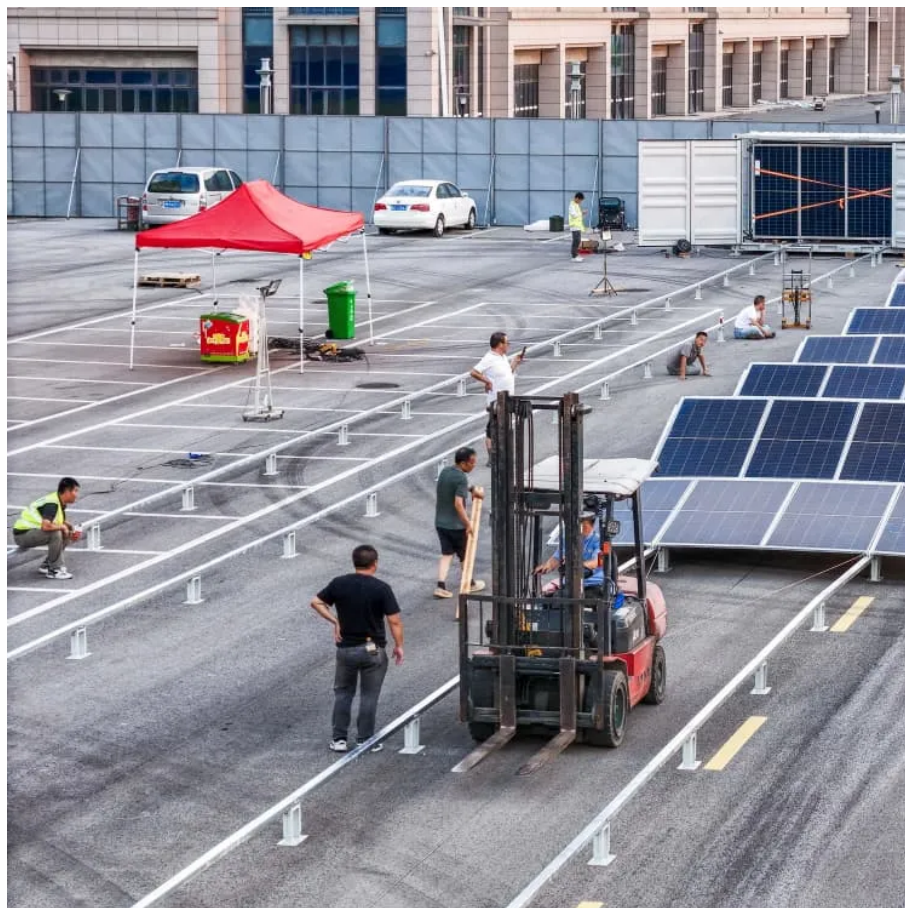




# Factory price bus tie breaker in Sweden





## Overview

---

The following sections describe tie breaker functions and provide examples of bus arrangements for a range of applications.

The following sections describe tie breaker functions and provide examples of bus arrangements for a range of applications.

The following sections describe tie breaker functions and provide examples of bus arrangements for a range of applications.

A Bus Tie Breaker is an essential device used in electrical systems to connect or isolate individual sections of a switchboard. In maritime and offshore operations, particularly in vessels equipped with Dynamic Positioning (DP) systems, bus tie breakers play a critical role in ensuring power.

Understanding the function of tie breakers and electrical bus are key to optimizing backup power system configurations. The following sections describe tie breaker functions and provide examples of bus arrangements for a range of applications. Circuit breakers are used for multiple purposes in.

Circuit breakers are mechanical switching devices capable of breaking currents under specified abnormal circuit conditions. Circuit breakers are automatic electrical switches designed to interrupt current flow in the event of an overload or short. Molded Case Circuit Breaker?

Miniature Circuit.

The PPM 300 Bus tie breaker controller is designed for controlling a single bus tie breaker and supports ring busbar connections. The controller is designed to be part of a DEIF power management system which ensures that all breaker operations are carried out in a fast, efficient, and safe manner:.

A bus tie breaker is a device that connects or disconnects switchboard sections. In electrical distribution systems, a bus tie breaker is used to connect two sections of an electrical bus serving different power sources. Bus tie breakers are usually open, keeping the two sections separate. When one. What is a bus tie breaker power management system?



The power management system also ensures that enough power is available on each busbar section after the bus tie breaker opens. A DEIF power management system can include as many Bus tie breaker controllers as necessary. Part of the versatile PPM 300 range.

What is a bus tie breaker controller?

The controller is designed to be part of a DEIF power management system which ensures that all breaker operations are carried out in a fast, efficient, and safe manner: Before closing the bus tie breaker, the power management system synchronises the busbar sections, and before opening the bus tie breaker, the system de-loads the bus tie breaker.

How do bus tie breakers work?

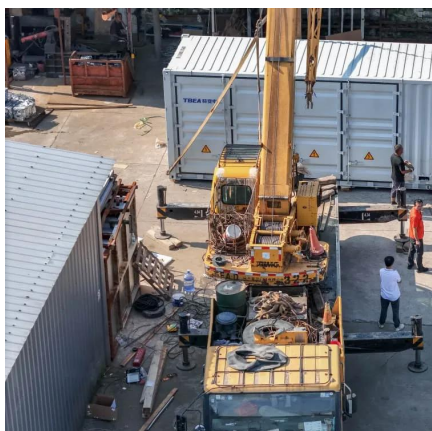
Bus tie breakers contribute to this by: Enhancing Redundancy: Ensuring that power can be rerouted in case of a fault in one section of the switchboard. Supporting Fail-Safe Modes: Allowing isolation of faulty sections while maintaining power to critical systems.

Is a bus tie breaker open or closed?

A tie breaker is normally open, meaning that it is off unless it is being used. In the context of a bus tie breaker, this means that the two sections of the electrical bus are normally separated, and the tie breaker is only closed when needed to connect the two sections and allow current to pass between them.



## Factory price bus tie breaker in Sweden



### [ASCO Data Bulletin , Increasing Power Redundancy](#)

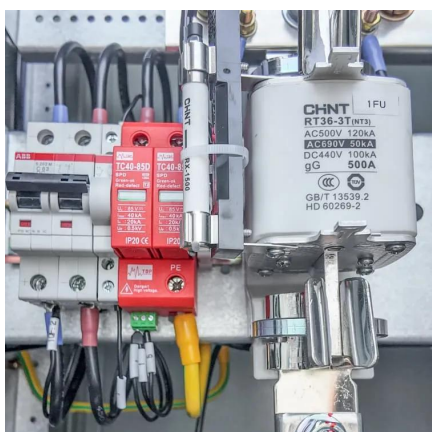
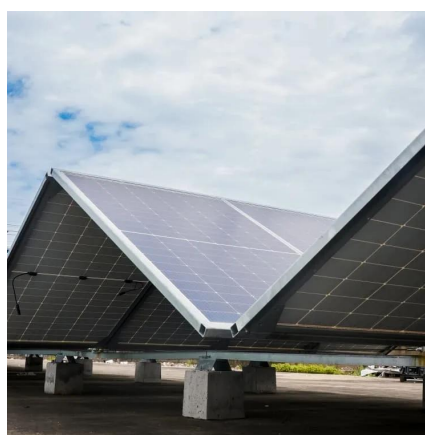
The following sections describe tie breaker functions and provide examples of bus arrangements for a range of applications.

[Request Quote](#)

### [Six common bus configurations in substations up to 345 kV](#)

This technical article explains six most common bus configurations used for distribution, transmission, or switching substations at voltages up to 345 kV. Presented single ...

[Request Quote](#)



### [Bus tie breaker , PPM 300 controller by DEIF](#)

The range offers variants designed for a wide range of marine and offshore applications -from generator control and protection to engineered power ...

[Request Quote](#)

### [ASCO Data Bulletin , Increasing Power ...](#)

The following sections describe tie breaker functions and provide examples of bus arrangements for a range of applications.

[Request Quote](#)



### [Bus tie breaker , PPM 300 controller by DEIF](#)

The range offers variants designed for a wide range of marine and offshore applications -from generator control and protection to engineered power management solutions developed for ...

[Request Quote](#)

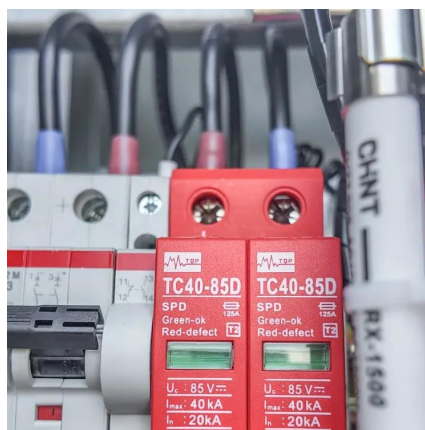


## Bus Tie Breaker

### [Six common bus configurations in substations up ...](#)

This technical article explains six most common bus configurations used for distribution, transmission, or switching substations ...

[Request Quote](#)



## Increasing Power Redundancy

Understanding the function of tie breakers and electrical bus are key to optimizing backup power system configurations. The following sections describe tie breaker functions and provide ...

[Request Quote](#)



Find Bus Tie Breaker related suppliers, manufacturers, products and specifications on GlobalSpec - a trusted source of Bus Tie Breaker information.

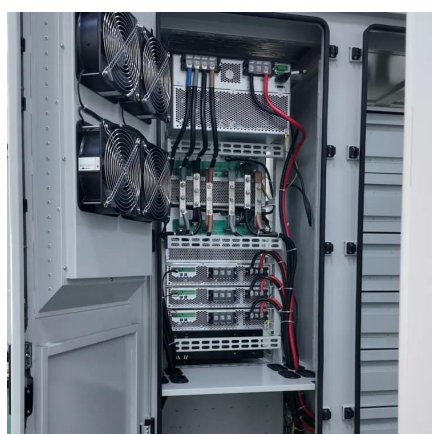
[Request Quote](#)



## What is a Bus Tie Breaker, Industrial & non-Facilities, Secondary

Q No 1: What is a Bus Tie Breaker? A bus tie breaker is a switchgear component that connects two separate busbars within a secondary-selective system. more

[Request Quote](#)



## [Bus Tie Breaker: A Key Component in Electrical Power ...](#)

At Lerus Training, we provide specialized courses covering the operation and maintenance of electrical systems, including bus tie breakers, in Dynamic Positioning ...

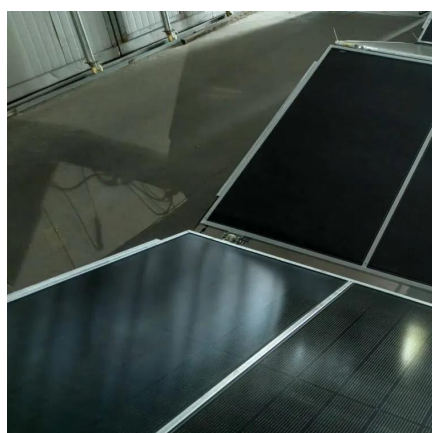
[Request Quote](#)



## [Understanding Bus Tie Breakers: Functionality And Practical](#)

Learn about bus tie breakers, their functionality, and how they're used in electrical systems to connect and isolate bus sections, enhance reliability, and facilitate maintenance and repairs.

[Request Quote](#)



## [Autonomous Tie Breaker , AKA Energy](#)



## Systems

Each of AKA's tie breaker systems operates autonomously. The tie breaker system is equipped with a controller, inputs that sense bus tie voltage, and contactor status. The only connection ...

[Request Quote](#)



## Bus Tie Breaker: A Key Component in Electrical Power ...

At Lerus Training, we provide specialized courses covering the operation and maintenance of electrical systems, including bus tie breakers, in Dynamic Positioning environments.

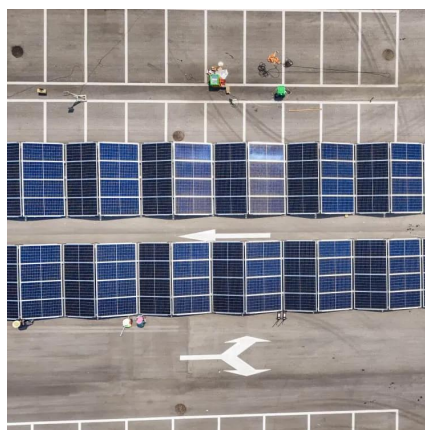
[Request Quote](#)



## **NEPSI**

Redundant source electrical systems with bus ties between the sources are a very popular design for reliable electrical systems. Many systems utilize a tie breaker, which is normally open so ...

[Request Quote](#)



## Autonomous Tie Breaker , AKA Energy Systems

Each of AKA's tie breaker systems operates autonomously. The tie breaker system is equipped with a controller, inputs that sense bus tie voltage, ...

[Request Quote](#)



## Understanding Bus Tie Breakers:



## [Functionality And ...](#)

Learn about bus tie breakers, their functionality, and how they're used in electrical systems to connect and isolate bus sections, enhance reliability, ...

[Request Quote](#)





## Contact Us

---

For catalog requests, pricing, or partnerships, please visit:

<https://energyinnovationday.pl>

Phone: +48 22 335 1273

Email: [info@energyinnovationday.pl](mailto:info@energyinnovationday.pl)

Scan the QR code to contact us via WhatsApp.

