



Execution system of wind turbine





Overview

Wind turbine design is the process of defining the form and configuration of a to extract energy from the . An installation consists of the systems needed to capture the wind's energy, point the turbine into the wind, convert into , and other systems to start, stop, and control the turbine.

Wind turbines convert the kinetic energy of wind into electricity through a simple three-step process: Blade Rotation: Wind strikes the aerodynamic blades, causing them to spin. Speed Increase: The rotor's slow rotation is transferred to a gearbox (or a direct-drive system) that.

Wind turbines convert the kinetic energy of wind into electricity through a simple three-step process: Blade Rotation: Wind strikes the aerodynamic blades, causing them to spin. Speed Increase: The rotor's slow rotation is transferred to a gearbox (or a direct-drive system) that.

This course was adapted from the Department of Energy website, Office of Energy Efficiency and Renewable Energy: <https://> Figure 1. Wind Power Plant.

Wind turbines harness the wind—a clean, free, and widely available renewable energy source—to generate electric power. This page offers a text version of the interactive animation: How a Wind Turbine Works. A wind turbine turns wind energy into electricity using the aerodynamic force from the rotor.

Wind turbines are a popular and sustainable source of energy that harnesses the power of wind to generate electricity. Understanding the workings of a wind turbine is key to maximizing its efficiency and output. The schematic diagram of a wind turbine provides a visual representation of its various.

Wind turbine design is the process of defining the form and configuration of a wind turbine to extract energy from the wind. [1] An installation consists of the systems needed to capture the wind's energy, point the turbine into the wind, convert mechanical rotation into electrical power, and.

Wind power, harnessing the freely available energy of the wind without CO₂ emissions or fuel costs, stands out as a sustainable, long-term solution. In Japan, wind power is rapidly expanding to help achieve the country's 2050 carbon-neutral goal. This guide walks you through: 1. Basic Structure &.



A wind turbine, also known as a wind generator, is a device that uses the power of the wind to generate electricity. When several wind turbines are grouped together in the same place, a wind farm is formed. A wind turbine consists of various parts:
Rotor: harvests the wind's energy usually with 3.



Execution system of wind turbine



[Electric Power Production Process: Wind Power Plant](#)

By harnessing the power of the wind, wind farms transform this natural resource into electricity efficiently and with minimal environmental impact. But how exactly is electricity ...

[Request Quote](#)

[Wind turbine: How it works, parts, and existing types](#)

Learn all about wind turbines: find key information about how they work, their parts, and the 4 different existing types.

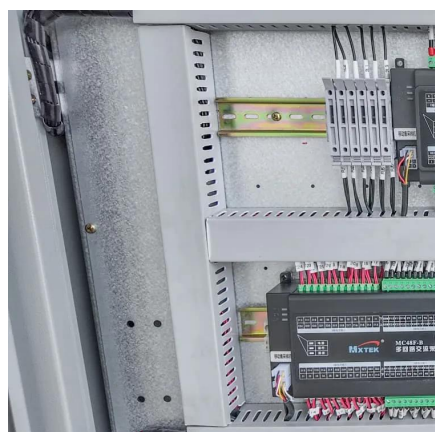
[Request Quote](#)



Wind Farm Technology: Complete Guide to Modern Wind Energy Systems ...

Comprehensive guide to wind farm technology covering turbines, systems, innovations, and future trends. Expert insights on modern wind energy solutions.

[Request Quote](#)



[Electric Power Production Process: Wind Power Plant](#)

By harnessing the power of the wind, wind farms transform this natural resource into electricity efficiently and ...

[Request Quote](#)



[How Wind Turbine Works: Structure, Types, and ...](#)

Discover how wind power works--from turbine structure and key components to types, efficiency-boosting technologies, grid ...

[Request Quote](#)

Wind turbine design

Overview
Aerodynamics
Power control
Other controls
Turbine size
Nacelle
Blades
Tower

Wind turbine design is the process of defining the form and configuration of a wind turbine to extract energy from the wind. An installation consists of the systems needed to capture the wind's energy, point the turbine into the wind, convert mechanical rotation into electrical power, and other systems to start, stop, and control the turbine.

[Request Quote](#)



How a Wind Turbine Works

Wind Turbine Energy System
Wind Turbine System Design
Wind Turbine Configuration
Wind Turbine Operation
Wind Turbine Generation System
Wind Turbine Control System
Wind Turbine System Diagram
System Diagram Of A Wind Turbine
Wind Turbine Power Systems Diagram
Wind Energy Flow Diagram
Wind Turbine Infographic
Wind

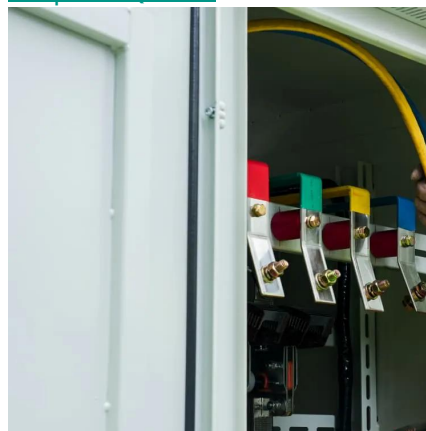


TurbineOverall wind turbine control system ,
Download Scientific DiagramA Visual Breakdown:
How Wind Turbine Systems WorkA Visual
Breakdown: How Wind Turbine Systems
WorkControl structure of the wind turbine models.
 , Download Scientific DiagramWind turbine control
system architecture , Download Scientific
DiagramDeveloping and Testing Model Predictive
Control Algorithms for Wind Offshore Wind Turbine
Diagram New International Project On
OffshoreEnergize wind operations with more
modern control , Wind Systems MagazineSet Up
Wind Power Plants at Inez Smith blogSee
alltechschematic

Understanding the Inner Workings of a Wind Turbine: A Simplified

Understanding the workings of a wind turbine is key to maximizing its efficiency and output. The schematic diagram of a wind turbine provides a visual representation of its various ...

[Request Quote](#)



How a Wind Turbine Works

The rotor connects to the generator, either directly (if it's a direct drive turbine) or through a shaft and a series of gears (a gearbox) that speed up the rotation and allow for a physically smaller ...

[Request Quote](#)



[How Wind Turbine Works: Structure, Types, and Efficiency](#)

Discover how wind power works--from turbine structure and key components to types, efficiency-boosting technologies, grid integration, safety and environmental measures, ...

[Request Quote](#)



[A Comprehensive Guide to Wind Farm Construction](#)

This guide walks you through the entire wind farm construction process, from initial planning to operation, and highlights why JMS Energy is a trusted partner in renewable energy ...

[Request Quote](#)



[Wind Turbine Commissioning: Electrical System Design](#)

This article provides an in-depth guide on electrical system design and installation tailored for wind turbine commissioning, highlighting the integral process from concept to on-site execution.

[Request Quote](#)

Understanding the Inner Workings of a Wind Turbine: A Simplified

Understanding the workings of a wind turbine is key to maximizing its efficiency and output. The schematic diagram of a wind turbine provides a visual representation of its various ...

[Request Quote](#)



Wind turbine design

Wind turbine design is the process of defining the form and configuration of a wind turbine to extract energy from the wind. [1] An installation consists of the systems needed to capture the ...

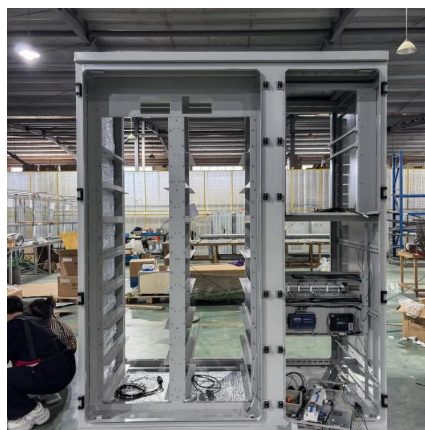
[Request Quote](#)

How a Wind Turbine Works



Wind turbines work on a simple principle: instead of using electricity to make wind--like a fan-- wind turbines use wind to make electricity. Wind turns the propeller-like blades of a turbine ...

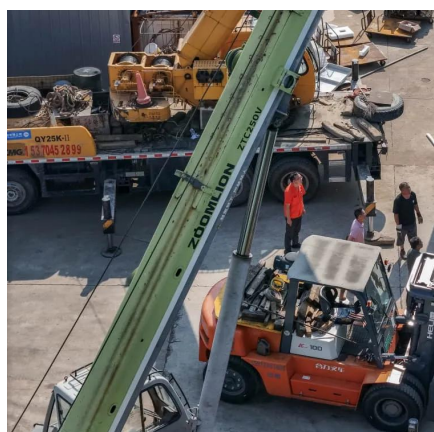
[Request Quote](#)



[Wind turbine: How it works, parts, and existing types](#)

Learn all about wind turbines: find key information about how they work, their parts, and the 4 different existing ...

[Request Quote](#)



Wind Farm Technology: Complete Guide to Modern Wind Energy ...

Comprehensive guide to wind farm technology covering turbines, systems, innovations, and future trends. Expert insights on modern wind energy solutions.

[Request Quote](#)



[A Comprehensive Guide to Wind Farm ...](#)

This guide walks you through the entire wind farm construction process, from initial planning to operation, and highlights why ...

[Request Quote](#)





Contact Us

For catalog requests, pricing, or partnerships, please visit:

<https://energyinnovationday.pl>

Phone: +48 22 335 1273

Email: info@energyinnovationday.pl

Scan the QR code to contact us via WhatsApp.

