



# Energy storage flywheel rotor processing hours





## Overview

---

Flywheel energy storage (FES) works by spinning a rotor (flywheel) and maintaining the energy in the system as rotational energy. When energy is extracted from the system, the flywheel's rotational speed is reduced as a consequence of the principle of conservation of energy; adding energy to the system correspondingly results in an increase in the speed of the flywheel. W.

FESS is used for short-time storage and typically offered with a charging/discharging duration between 20 seconds and 20 minutes. However, one 4-hour duration system is available on the market.

FESS is used for short-time storage and typically offered with a charging/discharging duration between 20 seconds and 20 minutes. However, one 4-hour duration system is available on the market.

rotor of high inertia up to 20,000-50,000 rpm. Electrical energy is thus converted to kinetic energy for storage. For discharging, the motor acts as a generator if periodically maintained (>25 years). The cycle numbers of flywheel energy storage systems are very high (>100,000). In.

Flywheel energy storage (FES) works by spinning a rotor (flywheel) and maintaining the energy in the system as rotational energy. When energy is extracted from the system, the flywheel's rotational speed is reduced as a consequence of the principle of conservation of energy; adding energy to the.

The disk-shaped flywheel rotor was made of steel, had a mass of about 1.5 metric tons and reached a maximum angular velocity of 314 rad/s or 3000 rounds per minute (rpm). In regular operation, deceleration of the flywheel was limited to about half of the maximum disk speed. The amount of energy.

Composite flywheels are designed, constructed, and used for energy storage applications, particularly those in which energy density is an important factor. Typical energies stored in a single unit range from less than a kilowatt-hour to levels approaching 150 kilowatt-hours. Thus, a single.

Energy storage flywheel systems are mechanical devices that typically utilize an electrical machine (motor/generator unit) to convert electrical energy in mechanical energy and vice versa. Energy is stored in a fast-rotating mass known as the flywheel rotor. The rotor is subject to high centripetal.



FESS is used for short-time storage and typically offered with a charging/discharging duration between 20 seconds and 20 minutes. However, one 4-hour duration system is available on the market. FESS is typically positioned between ultracapacitor storage (high cycle life but also very high storage. How energy is stored in a flywheel rotor?

Energy is stored in a fast-rotating mass known as the flywheel rotor. The rotor is subject to high centripetal forces requiring careful design, analysis, and fabrication to ensure the safe operation of the storage device. 1. Introduction.

What is energy storage Flywheel system?

Author to whom correspondence should be addressed. Energy storage flywheel systems are mechanical devices that typically utilize an electrical machine (motor/generator unit) to convert electrical energy in mechanical energy and vice versa. Energy is stored in a fast-rotating mass known as the flywheel rotor.

What rotors are used in a grid-scale flywheel energy storage system?

While some systems use low mass/high speed rotors, other use very massive rotors eg 200 tonnes and correspondingly much lower rotational speeds, referred to as grid-scale flywheel energy storage.

How much energy is stored in a composite flywheel?

Typical energies stored in a single unit range from less than a kilowatt-hour to levels approaching 150 kilowatt-hours. Thus, a single composite flywheel can be equivalent, in stored energy, from one to more than 100 automotive batteries. Moreover, in flywheel systems, the stored energy and output power are relatively independent of each other.



## Energy storage flywheel rotor processing hours



### Technology: Flywheel Energy Storage

FESS is used for short-time storage and typically offered with a charging/discharging duration between 20 seconds and 20 minutes. However, one 4-hour duration system is available on the ...

[Request Quote](#)

### Flywheel energy storage

Flywheel energy storage (FES) works by spinning a rotor (flywheel) and maintaining the energy in the system as rotational energy. When energy is extracted from the system, the flywheel's ...

[Request Quote](#)



### [Energy storage flywheel rotor processing hours](#)

The objective of this paper is to describe the key factors of flywheel energy storage technology, and summarize its applications including International Space Station (ISS), Low

[Request Quote](#)

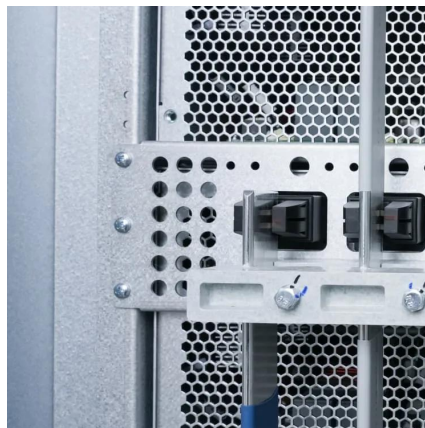


### [Energy Storage Flywheel Rotors--Mechanical Design](#)

Energy consumption has been shown to peak in the mornings and evening while energy production typically peaks around midday, especially for solar photovoltaic systems.



[Request Quote](#)



### A review of flywheel energy storage systems: state of the art ...

A rotor with lower density and high tensile strength will have higher specific energy (energy per mass), while energy density (energy per volume) is not affected by the material's ...

[Request Quote](#)



### A review of flywheel energy storage systems: state of the art and

There is noticeable progress in FESS, especially in utility, large-scale deployment for the electrical grid, and renewable energy applications. This paper gives a review of the ...

[Request Quote](#)



### Flywheel energy storage

Overview  
Main components  
Physical characteristics  
Applications  
Comparison to electric batteries  
See also  
Further reading  
External links

Flywheel energy storage (FES) works by spinning a rotor (flywheel) and maintaining the energy in the system as rotational energy. When energy is extracted from the system, the flywheel's rotational speed is reduced as a consequence of the principle of conservation of energy; adding energy to the system correspondingly results in an increase in the speed of the flywheel. W...





## [Composite Flywheels for Energy Storage](#)

Composite flywheels are designed, constructed, and used for energy storage applications, particularly those in which energy density is an important factor. Typical energies stored in a ...

[Request Quote](#)



[Request Quote](#)



## **How flywheel energy storage works**

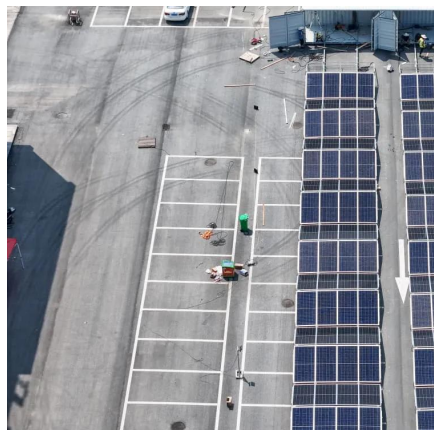
principle of rotating mass causes energy to store in a flywheel by converting electrical energy into mechanical energy in the form of rotational kinetic energy. 39 The energy fed to an FESS is ...

[Request Quote](#)

## [Rotor Design for High-Speed Flywheel Energy Storage Systems](#)

This vehicle contained a rotating flywheel that was connected to an electrical machine. At regular bus stops, power from electrified charging stations was used to accelerate the flywheel, thus ...

[Request Quote](#)



## [Designing Safer Energy Storage Flywheels](#)

CEM engineers are developing two flywheel energy storage systems under U.S. government contract: a 2 kilowatt-hour, 150-kilowatt, 40,000-rpm unit for a hybrid electric transit bus; and a ...

[Request Quote](#)



## Contact Us

---

For catalog requests, pricing, or partnerships, please visit:

<https://energyinnovationday.pl>

Phone: +48 22 335 1273

Email: [info@energyinnovationday.pl](mailto:info@energyinnovationday.pl)

Scan the QR code to contact us via WhatsApp.

