



Energy storage 280Ah battery rate






Overview

Featuring a nominal capacity of 280Ah and capable of a continuous 1C (280A) charge/discharge rate — with short bursts up to 2C (560A) — this cell is built for performance. It supports up to 6,000 life cycles, offering long-term use with minimal degradation.

Featuring a nominal capacity of 280Ah and capable of a continuous 1C (280A) charge/discharge rate — with short bursts up to 2C (560A) — this cell is built for performance. It supports up to 6,000 life cycles, offering long-term use with minimal degradation.

energy storage applications which improve the peak and efficient installation. For other inverters or stand-alone battery installation, the conduit  2025 EG4® ELECTRONIC TO CHANGE WITHOUT NOTICE. MODEL #: WM-48|28 t and dimensioning current fr .

Definition: A Lithium Ion Battery 280Ah cell is a high-capacity energy storage unit designed for deep-cycle applications, delivering 280 ampere-hours of charge and 3.2V nominal voltage. Voltage range: 2.5–3.65V (discharge/charge). Cycle life: 6,000+ cycles at 100% depth of discharge (DoD). Energy.

The 48V 280Ah lithium battery packs a total of 13,440 watt hours or around 13.44 kilowatt hours worth of power, which makes it pretty much perfect for those big power hungry setups like storing solar energy, running electric cars, or powering various industrial equipment. When working at 48 volts.

To determine the amperage of the energy storage battery 280, one must consider multiple factors integral to its specifications and usage. 1. Battery capacity, 2. Voltage rating, 3. Discharge rates, 4. Efficiency. Among these, the battery capacity is crucial, as it directly influences the overall.

The Gaiaray EVE Grade A 280Ah LiFePO4 battery cell offers 6,000+ cycles, 3.2V output, and thermal stability for home energy storage and EVs. Its high energy density (175 Wh/kg) and low self-discharge rate (3% monthly) ensure long-term reliability. Grade A cells undergo rigorous quality checks.

Experience exceptional energy storage performance with the EVE LF280K 280Ah



3.2V LiFePO₄ Prismatic Battery Pack of 4 — engineered by EVE Energy to meet the needs of high-demand systems. Whether you're building a solar energy storage bank, an EV powertrain, or a backup power solution, this Grade A.



Energy storage 280Ah battery rate



Lithium Ion Battery 280Ah Cell: The Future of High-Capacity ...

Definition: A Lithium Ion Battery 280Ah cell is a high-capacity energy storage unit designed for deep-cycle applications, delivering 280 ampere-hours of charge and 3.2V ...

[Request Quote](#)

How the 280AH Lithium Battery Define the Limits of Energy Storage ...

...

How the 280AH Lithium Battery Define the Limits of Energy Storage Technology? When faced with the problem of choosing an energy storage device, many users are often torn between ...

[Request Quote](#)



What Limits 280Ah Lithium Battery Energy Breakthroughs?

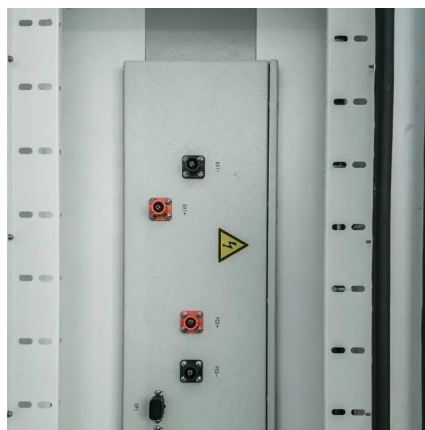
Energy density determines how much power a 280Ah lithium battery stores per unit volume. Higher energy density enables longer runtime for EVs and solar storage systems but ...

[Request Quote](#)

EG4® WALLMOUNT INDOOR 280A

The battery design comes manufactured with 600A internal busbars with multiple terminals (4 positive & 4 negative) eliminating the need for external busbars when paralleling batteries ...

[Request Quote](#)



[What applications suit 48V 280Ah lithium battery?](#)

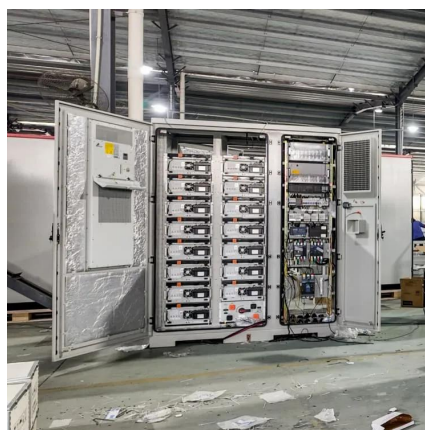
The 48V 280Ah lithium battery packs a total of 13,440 watt hours or around 13.44 kilowatt hours worth of power, which makes it pretty much perfect for those big power hungry ...

[Request Quote](#)

[\(Pack of 4\) EVE LF280K 280Ah 3.2V LiFePO4 Prismatic Battery](#)

Featuring a nominal capacity of 280Ah and capable of a continuous 1C (280A) charge/discharge rate -- with short bursts up to 2C (560A) -- this cell is built for performance. It supports up to ...

[Request Quote](#)



[Energy Storage Cell Evolution: 280Ah to 600Ah+ to 3000Ah](#)

Since 2022, 280Ah cells remained dominant, but larger 314Ah cells began to emerge. With over 20 variants in sizes ranging from 305Ah to 580Ah, the market saw cells like ...

[Request Quote](#)

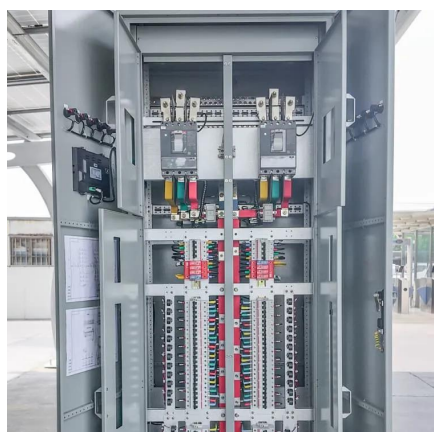
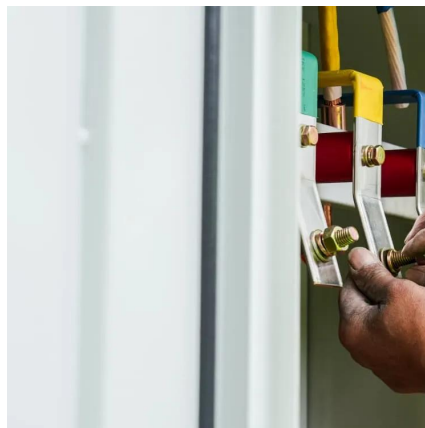
EVE LF280K V3 LiFePO4 3.2V 280Ah



Lithium Grade A Battery Cell

Introducing the Brand new EVE LF280K Grade A 3.2V 280Ah LiFePO4 lithium Battery cell - now with 8,000 cycle life and impressive performance well above 280Ah, with most tests exceeding ...

[Request Quote](#)



Lithium Ion Battery 280Ah Cell: The Future of High-Capacity Energy

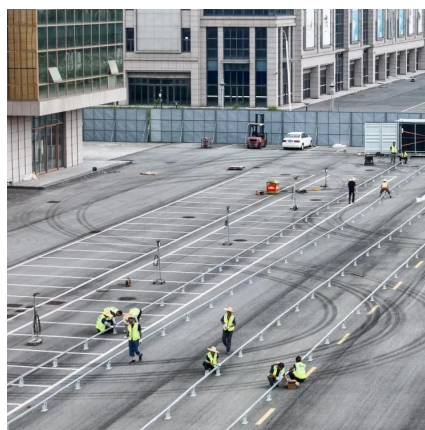
Definition: A Lithium Ion Battery 280Ah cell is a high-capacity energy storage unit designed for deep-cycle applications, delivering 280 ampere-hours of charge and 3.2V ...

[Request Quote](#)

[How many amps is the energy storage battery 280 , NenPower](#)

The maximum discharge rate for a 280Ah battery varies based on its chemistry and design. In general, you might expect a lead-acid battery to safely discharge at a rate of C/10, ...

[Request Quote](#)



What Makes Gaiaray EVE 280Ah LiFePO4 Cells Ideal for Energy Storage?

The Gaiaray EVE Grade A 280Ah LiFePO4 battery cell offers 6,000+ cycles, 3.2V output, and thermal stability for home energy storage and EVs. Its high energy density (175 ...

[Request Quote](#)



Contact Us

For catalog requests, pricing, or partnerships, please visit:

<https://energyinnovationday.pl>

Phone: +48 22 335 1273

Email: info@energyinnovationday.pl

Scan the QR code to contact us via WhatsApp.

