



Do 5g base stations need to be divided into communication and





Overview

5G is the fifth generation of cellular network technology and the successor to 4G. First deployed in 2019, its technical standards are developed by the 3rd Generation Partnership Project (3GPP) in cooperation with the ITU's IMT-2020 program. 5G networks divide coverage areas into smaller zones called cells, enabling devices to connect to local base stations via radio. Each station con. HistoryIn 2008, NASA and the conducted nanosatellite.

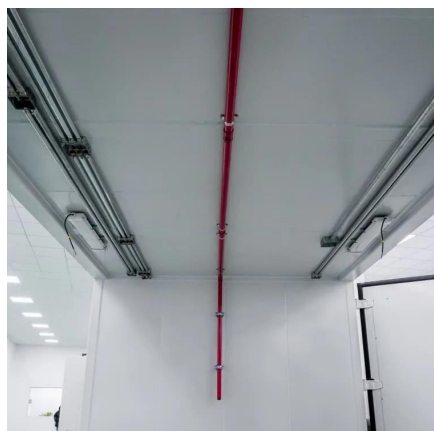
Small cells are low-power radio nodes that extend network capacity in dense or indoor areas. They operate over short distances, typically a few dozen to a few hundred metres, and are used to maintain coverage for mmWav.

The 5G core (5GC) is a service-oriented, software-defined system that separates control and user planes and supports flexible deployment. It replaces the 4G with modular, software-ba.

5G networks use multiple parts of the . They operate across three main frequency ranges—low, mid, and high bands—which balance speed, coverage, and signal quality differently. Between 2.



Do 5g base stations need to be divided into communication and



[Unveiling the 5G Base Station: The Backbone of ...](#)

In this comprehensive article, we will delve into the intricate world of 5G base stations, exploring their components, architecture, enabling technologies, ...

[Request Quote](#)

5G Base Station Architecture

The Base Station cabinet is a single unit that includes both the RF functions and the baseband processing functions. The antenna subsystem connects with the antenna and ...

[Request Quote](#)



Complete Guide to 5G Base Station Construction , Key Steps, ...

Explore how 5G base stations are built--from site planning and cabinet installation to power systems and cooling solutions. Learn the essential components, technologies, and ...

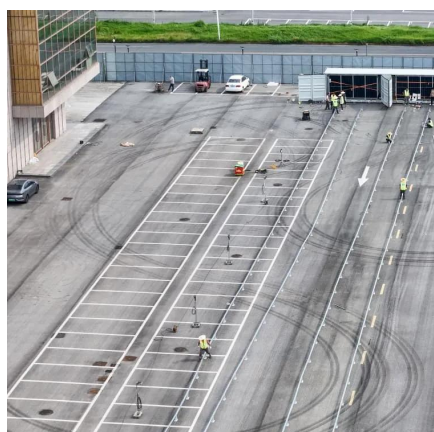
[Request Quote](#)



[What is 5G base station architecture?](#)

To accommodate these higher frequencies, different and more densely distributed base station antenna for mobile communication is ...

[Request Quote](#)



[What is 5G base station architecture?](#)

To accommodate these higher frequencies, different and more densely distributed base station antenna for mobile communication is needed. Your design should take into ...

[Request Quote](#)

Chapter 3: Basic Architecture -- 5G Mobile Networks: A Systems ...

First, each base station establishes the wireless channel for a subscriber's UE upon power-up or upon handover when the UE is active. This channel is released when the UE remains idle for a ...

[Request Quote](#)



5G

5G is the fifth generation of cellular network technology and the successor to 4G. First deployed in 2019, [1] its technical standards are developed by the 3rd Generation Partnership Project ...

[Request Quote](#)

[Chapter 2: Architecture -- Private 5G: A](#)



[Systems Approach ...](#)

Aether is a Kubernetes-based edge cloud, augmented with a 5G-based connectivity service. Aether is targeted at enterprises that want to take advantage of 5G connectivity in support of ...

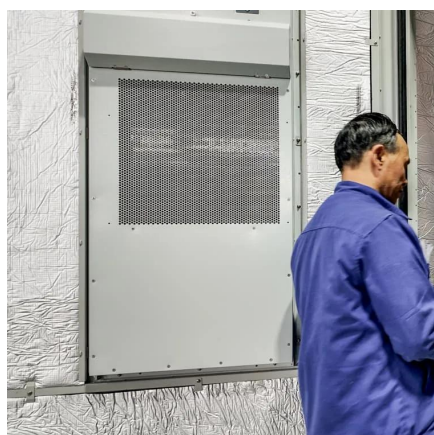
[Request Quote](#)



[Unveiling the 5G Base Station: The Backbone of Next-Gen ...](#)

In this comprehensive article, we will delve into the intricate world of 5G base stations, exploring their components, architecture, enabling technologies, deployment strategies, and the ...

[Request Quote](#)



[What is 5g base station architecture](#)

A 5G base station, also known as a gNodeB (gNB), is a critical component of the 5G Radio Access Network (RAN). It facilitates wireless communication between user equipment (UE) ...

[Request Quote](#)



[Complete Guide to 5G Base Station Construction](#)

Explore how 5G base stations are built--from site planning and cabinet installation to power systems and cooling solutions. Learn the ...

[Request Quote](#)

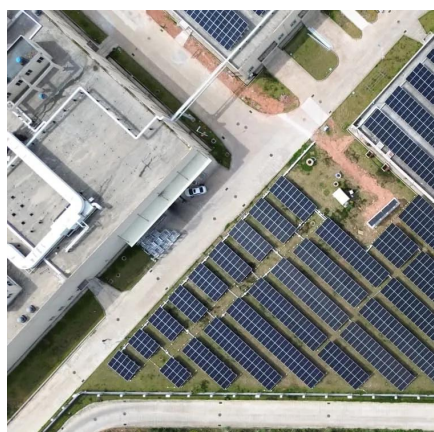


5G Base Station Architecture



The Base Station cabinet is a single unit that includes both the RF functions and the baseband processing functions. The antenna ...

[Request Quote](#)



[Chapter 3: Basic Architecture -- 5G Mobile](#)

...

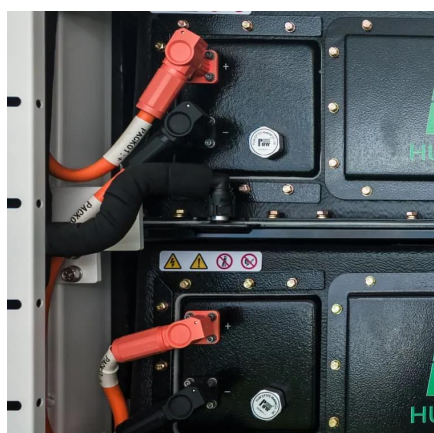
First, each base station establishes the wireless channel for a subscriber's UE upon power-up or upon handover when the UE is active. This channel ...

[Request Quote](#)

[Cellular Networks, Cells, and Base Stations -- EITC](#)

To build a 5G cell tower, you need a fiber optic Internet connection, some 5G cell equipment, and something tall to stick the equipment to. The division of a city into small cells ...

[Request Quote](#)



5g base station architecture

The backhaul connects the base stations to the core network, while the fronthaul connects the gNB to the DU and CU. Both are critical for ensuring seamless communication ...

[Request Quote](#)



Contact Us

For catalog requests, pricing, or partnerships, please visit:

<https://energyinnovationday.pl>

Phone: +48 22 335 1273

Email: info@energyinnovationday.pl

Scan the QR code to contact us via WhatsApp.

