



Differences between double-glass components





Overview

Single-glass modules typically use a combination of glass, EVA (ethylene vinyl acetate) and a backsheet, while double-glass modules do not require a backsheet and instead use a second layer of glass. This structural difference affects the overall performance and.

Single-glass modules typically use a combination of glass, EVA (ethylene vinyl acetate) and a backsheet, while double-glass modules do not require a backsheet and instead use a second layer of glass. This structural difference affects the overall performance and.

Polymer film, also known as backsheet, is sometimes incorrectly called Tedlar, although this material, developed by Dupont, is only one of the components of polymer film among other options. The thickness of the front glass generally used for this type of structure is 3.2 mm. Dual-glass type.

By contrast, double glass solar panels—also called bifacial solar panels—have a fresh design with transparent layers on both the front and back. Often filled with a transparent encapsulant, this area between the layers increases lifetime and durability. Double glass solar panels can collect light.

Single-glass modules typically use a combination of glass, EVA (ethylene vinyl acetate) and a backsheet, while double-glass modules do not require a backsheet and instead use a second layer of glass. This structural difference affects the overall performance and longevity of the module. [pdf] Are.

Differences between double-glass photovoltaic panels and single-sided glass panels. However, advancements in glass technology have mitigated this issue to some extent. Weight: modules are generally heavier, which can impact their.

The main difference between double-glass photovoltaic modules and single-sided glass solar panels lies in their construction and design, which can impact their durability, performance, and applications. Construction: Double-glass modules consist of two layers of glass sandwiching the solar cells.

The difference between the double glass photovoltaic modules and common



component what is double glass photovoltaic modules?

Just as its name implies is to point to by two pieces of glass and solar cell composed of composite layer, between cell by wire together in series, in parallel to the pins of.



Differences between double-glass components



Differences between double-glass photovoltaic panels and ...

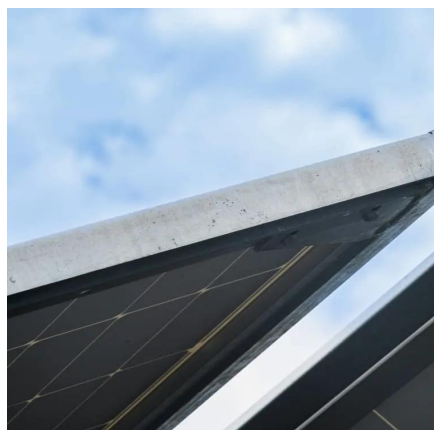
When considering solar panels, single glass and double glass configurations each have their own pros and cons. Single glass panels are often chosen for their traditional design and common

[Request Quote](#)

The Difference Between the Double Glass Photovoltaic Modules ...

Just as its name implies is to point to by two pieces of glass and solar cell composed of composite layer, between cell by wire together in series, in parallel to the pins of the photovoltaic cell ...

[Request Quote](#)



The Difference Between Double-glass and Single-sided Glass ...

In summary, the choice between double-glass photovoltaic modules and single-sided glass solar panels depends on factors such as the intended application, environmental ...

[Request Quote](#)

What are the differences between single-glass and double-glass ...

This means that the whole structure of Raytech double-glass solar modules (two layers of glass and one layer of solar cells in the middle) are highly resistant to chemical reactions such as ...



[Request Quote](#)



The difference between double glass photovoltaic components ...

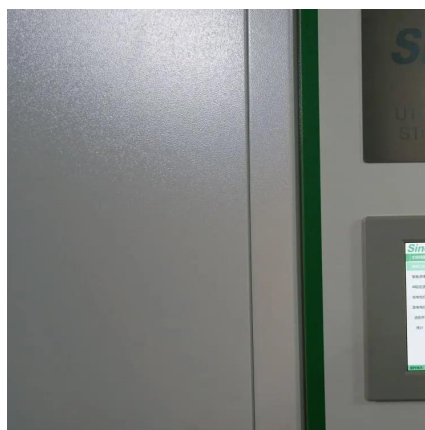
Double glass components do not require an aluminum frame unless there is a large amount of dew on the glass surface. The absence of an aluminum frame prevents the electric field that ...

[Request Quote](#)

Double Glass vs Single Glass Solar Panel: Which is Best?

Both types generate clean energy, but double glass panels generally shine brighter. They can capture 5-25% more sunlight due to their bifacial design, which means they absorb ...

[Request Quote](#)



The Difference Between Double-glass and Single ...

In summary, the choice between double-glass photovoltaic modules and single-sided glass solar panels depends on factors such as ...

[Request Quote](#)

THE DIFFERENCE BETWEEN DOUBLE



GLASS AND SINGLE

The main difference between double-glass photovoltaic modules and single-sided glass solar panels lies in their construction and design, which can impact their durability, performance, ...

[Request Quote](#)



What are the advantages of dual-glass Dualsun modules?

Dual-glass type modules (also called double glass or glass-glass) are made up of two glass surfaces, on the front and on the rear with a thickness of 2.0 mm each.

[Request Quote](#)

Difference Between Single Glass & Double Glass ...

The main point of difference between single glass and double glass panels is the layers of glass that bring all the other differences. Single glass panels ...

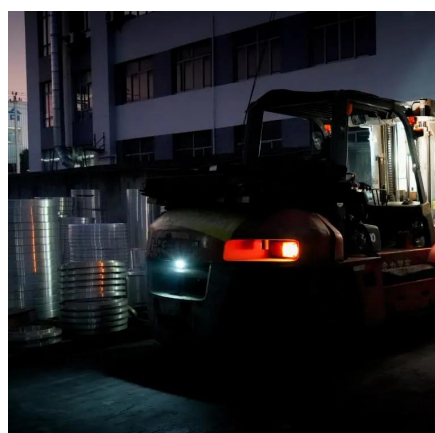
[Request Quote](#)



What are the differences between single-glass and ...

This means that the whole structure of Raytech double-glass solar modules (two layers of glass and one layer of solar cells in the middle) are highly ...

[Request Quote](#)



Difference Between Single Glass & Double



[Glass Solar Panels](#)

The main point of difference between single glass and double glass panels is the layers of glass that bring all the other differences. Single glass panels are more affordable, and easier to ...

[Request Quote](#)



[Differences between single and double glass components](#)

Understanding the difference between single glass and double glass panels can help you make an informed decision about which type of solar panel is best for your needs.

[Request Quote](#)



Contact Us

For catalog requests, pricing, or partnerships, please visit:

<https://energyinnovationday.pl>

Phone: +48 22 335 1273

Email: info@energyinnovationday.pl

Scan the QR code to contact us via WhatsApp.

